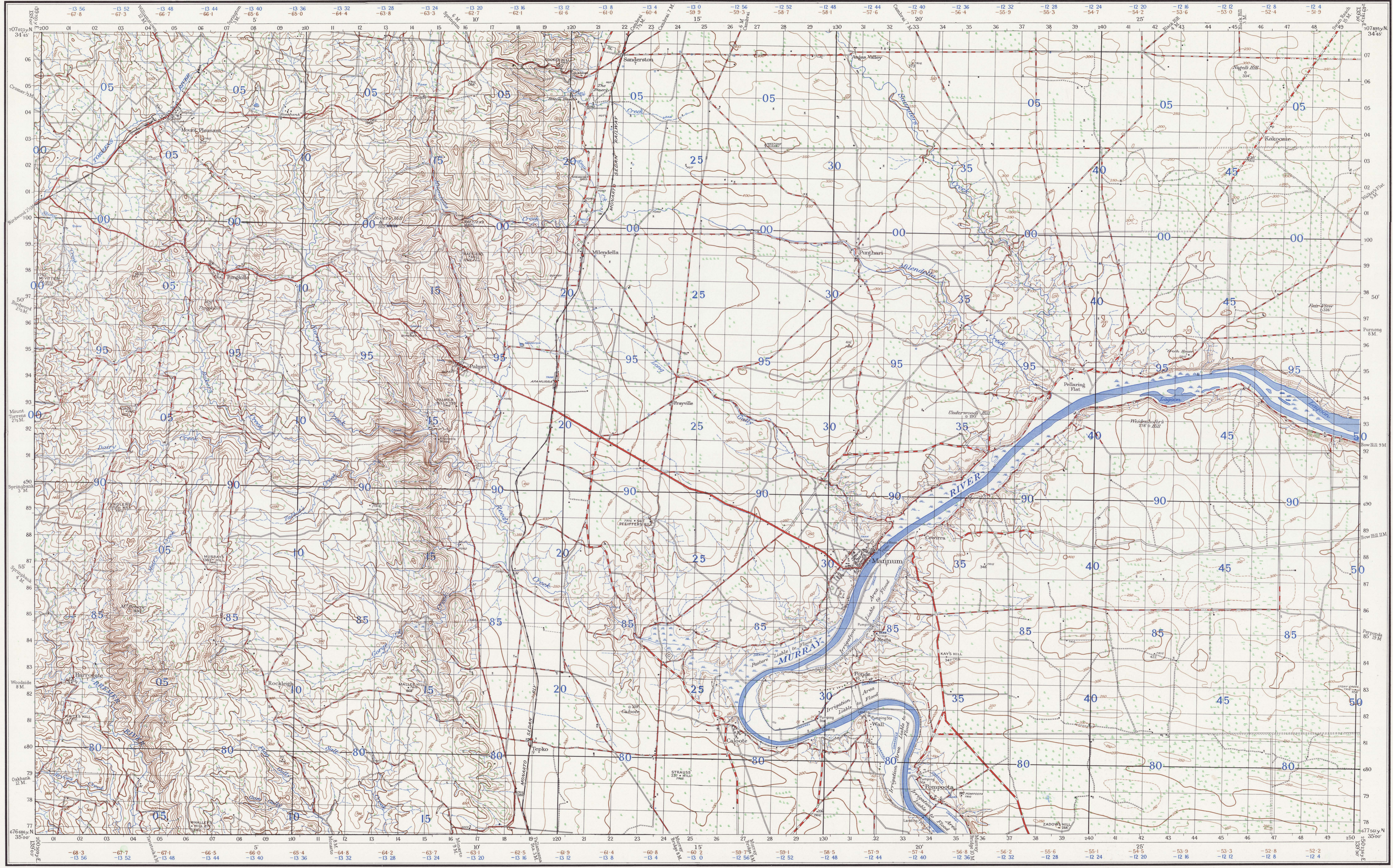


SOUTH AUSTRALIA MANNUM



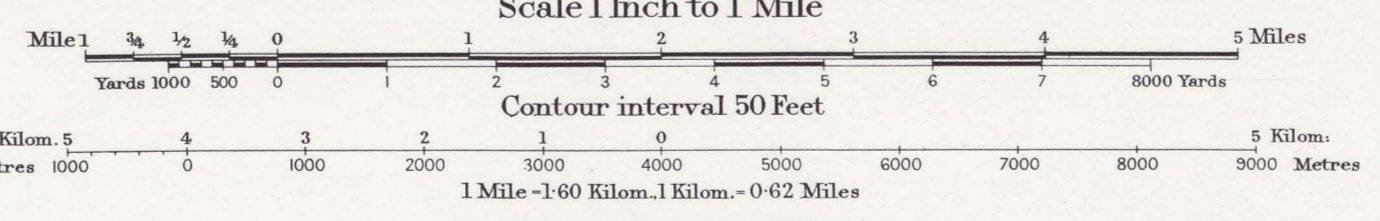
Prepared by Australian Section Imperial General Staff

The framework of this Map depends entirely upon the First and Second Order Triangulation as carried out by the Australian Survey Corps.
 Transverse Mercator Projection. Elevations in feet, Mean Sea Level, Port Adelaide. Surveyed in 1887 by the Australian Survey Corps with aid of Air Photos by the Royal Australian Air Force.

Origin of Longitude: Sydney Observatory, 151° 12' 17.85"
 EDITION 1 - AAS
 SERIES R 741
 HQ/AA/0560 (N)

Bridge (solid except where shown as masonry or iron)	—
Culvert	—
Water-hole	—
Swamp or Marsh	—
Creek	—
Watercourse (non-perennial)	—
Water Channel	—
Railway (double line)	—
Railway (single line)	—
Light railway	—

Embankment	—
Cutting	—
Post Office	—
Post & Telegraph Office (in villages)	—
Roads	—
First Class	—
Second	—
Third	—
Fourth	—
Roads impassable to M.I. in bad weather	—
Stone Wall	—



INDEX TO ADJOINING SHEETS

GAWLER	CAMBRIA	SWAN REACH
ADELAIDE	MANNUM	CAIRNAMONT
ECHINGA	MOBLING	KAROONDA

Truck	—
House	—
Garage	—
Stable	—
Windmill	—
Blacksmith's Shop (forge)	—
Church	—
Mill or Factory	—
Lighthouse	—
Telegraph or Telephone Line	—

Wind Pump	—
Cemetery	—
Timber	—
Scrub	—
First Class	—
Second	—
Third	—
Fourth	—
Fifth	—
Sixth	—
Seventh	—
Eighth	—
Ninth	—
Tenth	—
Eleventh	—
Twelfth	—
Thirteenth	—
Fourteenth	—
Fifteenth	—
Sixteenth	—
Seventeenth	—
Eighteenth	—
Nineteenth	—
Twentieth	—

TO GIVE A GRID REFERENCE ON THIS SHEET
 Pay attention to the smaller coordinates figures of the corners and in margins. They are the finishing full coordinates. 112

BEY ATTENTION TO LARGER MARGINAL FIGURES AND TO THOSE PRINTED ON THE FACE OF THE MAP-VIZ 112

POINT	Scotts Hill	(TWG)
East	North	North
12	12	00
13	13	01
14	14	02
15	15	03
16	16	04
17	17	05
18	18	06
19	19	07
20	20	08
21	21	09
22	22	10
23	23	11
24	24	12
25	25	13
26	26	14
27	27	15
28	28	16
29	29	17
30	30	18
31	31	19
32	32	20
33	33	21
34	34	22
35	35	23
36	36	24
37	37	25
38	38	26
39	39	27
40	40	28
41	41	29
42	42	30
43	43	31
44	44	32
45	45	33
46	46	34
47	47	35
48	48	36
49	49	37
50	50	38
51	51	39
52	52	40
53	53	41
54	54	42
55	55	43
56	56	44
57	57	45
58	58	46
59	59	47
60	60	48
61	61	49
62	62	50
63	63	51
64	64	52
65	65	53
66	66	54
67	67	55
68	68	56
69	69	57
70	70	58
71	71	59
72	72	60
73	73	61
74	74	62
75	75	63
76	76	64
77	77	65
78	78	66
79	79	67
80	80	68
81	81	69
82	82	70
83	83	71
84	84	72
85	85	73
86	86	74
87	87	75
88	88	76
89	89	77
90	90	78
91	91	79
92	92	80
93	93	81
94	94	82
95	95	83
96	96	84
97	97	85
98	98	86
99	99	87
00	00	88
01	01	89
02	02	90
03	03	91
04	04	92
05	05	93
06	06	94
07	07	95
08	08	96
09	09	97
10	10	98
11	11	99
12	12	00
13	13	01
14	14	02
15	15	03
16	16	04
17	17	05
18	18	06
19	19	07
20	20	08
21	21	09
22	22	10
23	23	11
24	24	12
25	25	13
26	26	14
27	27	15
28	28	16
29	29	17
30	30	18
31	31	19
32	32	20
33	33	21
34	34	22
35	35	23
36	36	24
37	37	25
38	38	26
39	39	27
40	40	28
41	41	29
42	42	30
43	43	31
44	44	32
45	45	33
46	46	34
47	47	35
48	48	36
49	49	37
50	50	38
51	51	39
52	52	40
53	53	41
54	54	42
55	55	43
56	56	44
57	57	45
58	58	46
59	59	47
60	60	48
61	61	49
62	62	50
63	63	51
64	64	52
65	65	53
66	66	54
67	67	55
68	68	56
69	69	57
70	70	58
71	71	59
72	72	60
73	73	61
74	74	62
75	75	63
76	76	64
77	77	65
78	78	66
79	79	67
80	80	68
81	81	69
82	82	70
83	83	71
84	84	72
85	85	73
86	86	74
87	87	75
88	88	76
89	89	77
90	90	78
91	91	79
92	92	80
93	93	81
94	94	82
95	95	83
96	96	84
97	97	85
98	98	86
99	99	87
00	00	88
01	01	89
02	02	90
03	03	91
04	04	92
05	05	93
06	06	94
07	07	95
08	08	96
09	09	97
10	10	98
11	11	99
12	12	00
13	13	01
14	14	02
15	15	03
16	16	04
17	17	05
18	18	06
19	19	07
20	20	08
21	21	09
22	22	10
23	23	11
24	24	12
25	25	13
26	26	14
27	27	15
28	28	16
29	29	17
30	30	18
31	31	19
32	32	20
33	33	21
34	34	22
35	35	23
36	36	24
37	37	25
38	38	26
39	39	27
40	40	28
41	41	29
42	42	30
43	43	31
44	44	32
45	45	33
46	46	34
47	47	35
48	48	36
49	49	37
50	50	38
51	51	39
52	52	40
53	53	41
54	54	42
55	55	43
56	56	44
57	57	45
58	58	46
59	59	47
60	60	48
61	61	49
62	62	50
63	63	51
64	64	52
65	65	53
66	66	54
67	67	55
68	68	56
69	69	57
70	70	58
71	71	59
72	72	60
73	73	61
74	74	62
75	75	63
76	76	64
77	77	65
78	78	66
79	79	67
80	80	68
81	81	69
82	82	70
83	83	71
84	84	72
85	85	73
86	86	74
87	87	75
88	88	76
89	89	77
90	90	78
91	91	79
92	92	80
93	93	81
94	94	82
95	95	83
96	96	84
97	97	85
98	98	86
99	99	87
00	00	88
01	01	89
02	02	90
03	03	91
04	04	92
05	05	93
06	06	94
07	07	95
08	08	96
09	09	97
10	10	98
11	11	99
12	12	00
13	13	01
14	14	02
15	15	03
16	16	04
17	17	05
18	18	06
19	19	07
20	20	08
21	21	09
22	22	10
23	23	11