

No. _____
 DATE 4.1.1930

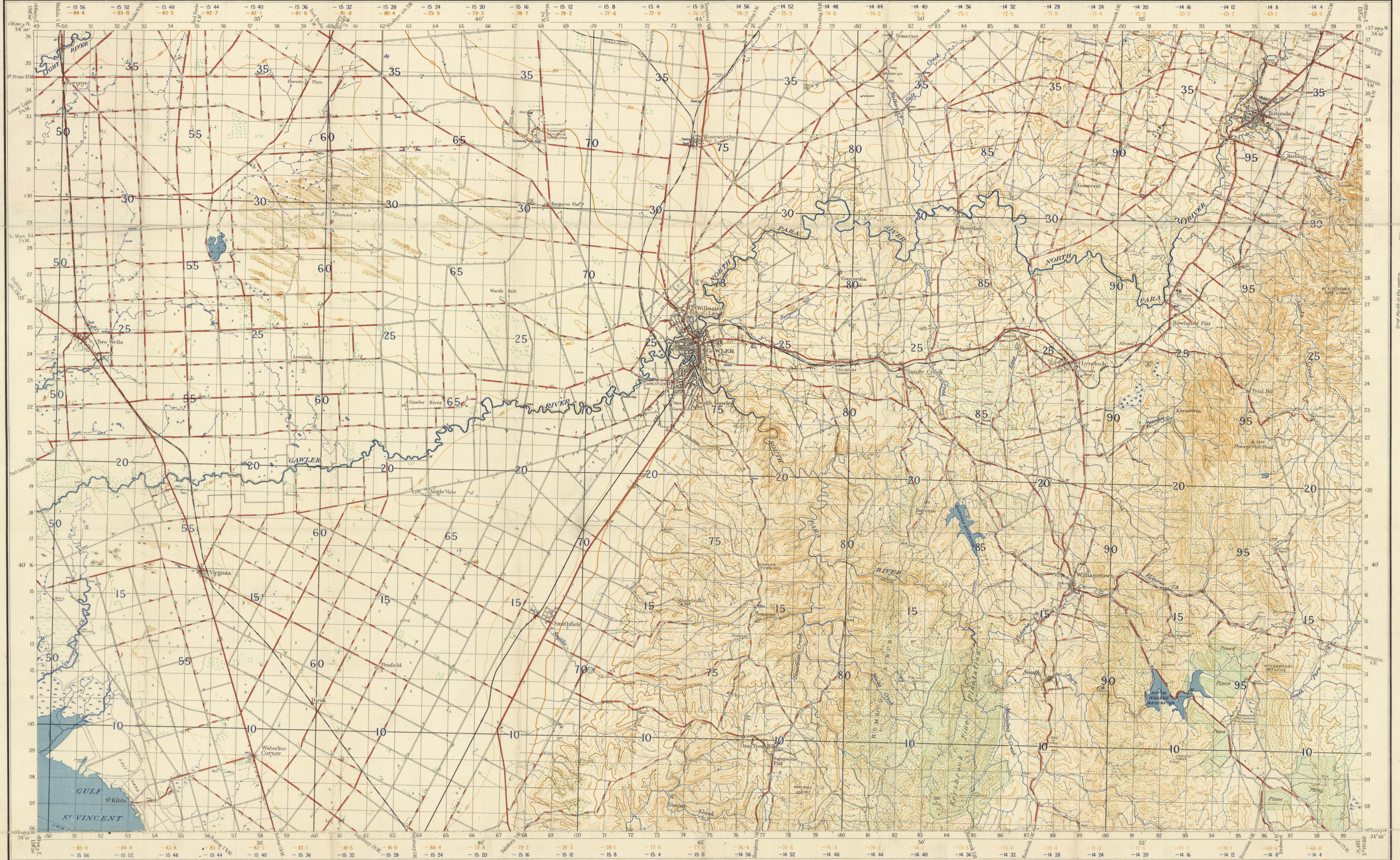
The following Sheets are on sale through authorized Agents—

Adelaide (1915)
 Gawler

SOUTH AUSTRALIA GAWLER

Convergence based on Longitude 142°E
 No 800 ZONE 6
 SHEET SOUTH 54
 MIVNEANW

AUSTRALIA 1:63,360



Prepared by Australian Section Imperial General Staff

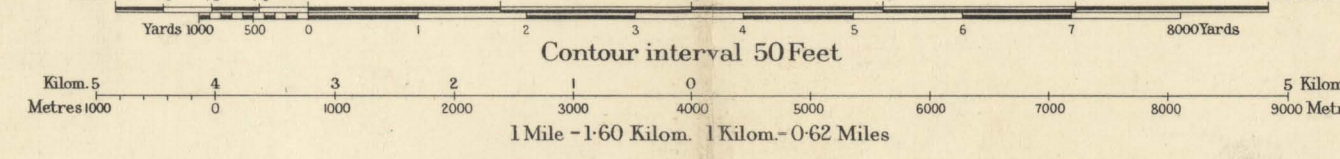
The framework of this Map depends entirely upon the Main Geodetic Triangulation of S.A., supplemented by topographical triangulation by the Australian Survey Corps. Transverse Mercator Projection. Elevations in feet. Low Water Mark, Port Adelaide Surveyed in 1855 by Australian Survey Corps with aid of Air Photos by Royal Australian Air Force.

Origin of Longitude, Sydney Observatory, 151°12'17.85"

- Bridge (wood except where shown as masonry or iron)
- Culvert
- Water-Beds
- Swamp or Marsh
- Creek
- Watercourse (non-perennial)
- Water channel
- Railway (double line)
- Railway (single line)

- Light railway
- Embankment
- Cutting
- Post Office
- Post & Telegraph Office (in villages)
- Roads (First Class)
- Roads (Second Class)
- Roads (Third Class)
- Roads (Fourth Class)
- Roads impassable to motor cars in bad weather

Scale 1 Inch to 1 Mile



INDEX TO ADJOINING SHEETS

SANDY PT	KAPUNDA	TRURO
EDEN	GAWLER	EDEN
ROSELAND	MANNING	

- Track
- House
- Garage
- School
- Hotel
- Blacksmith's Shop (forge)
- Church
- Mill or Factory
- Lighthouse

- Telegraph or Telephone line
- Wind Pipe
- Cometary
- Timber
- Scrub
- Trig Station (and altitude)
- Intersected point (and altitude)
- Fathom Lines
- Contours

TO GIVE A GRID REFERENCE ON THIS SHEET

Pay attention to the smaller coordinate figures at the corners and to margins. They are the starting point measurements—viz 175

PAY ATTENTION TO LARGER MARGINAL FIGURES AND TO THOSE PRINTED ON THE FACE OF THE MAP—VIZ 175

POINT QUARTZ HILL (TRIG)

EAST	73	NORTH	15
WEST	738	SOUTH	150

REFERENCE 738150

Unit: Square 1000
 Reference to nearest
 Nearest similar reference distant 60 miles

Crown Copyright Reserved

NOTE The brown (convergence) and blue (time correction) figures within the borders of this map are for Artillery purposes