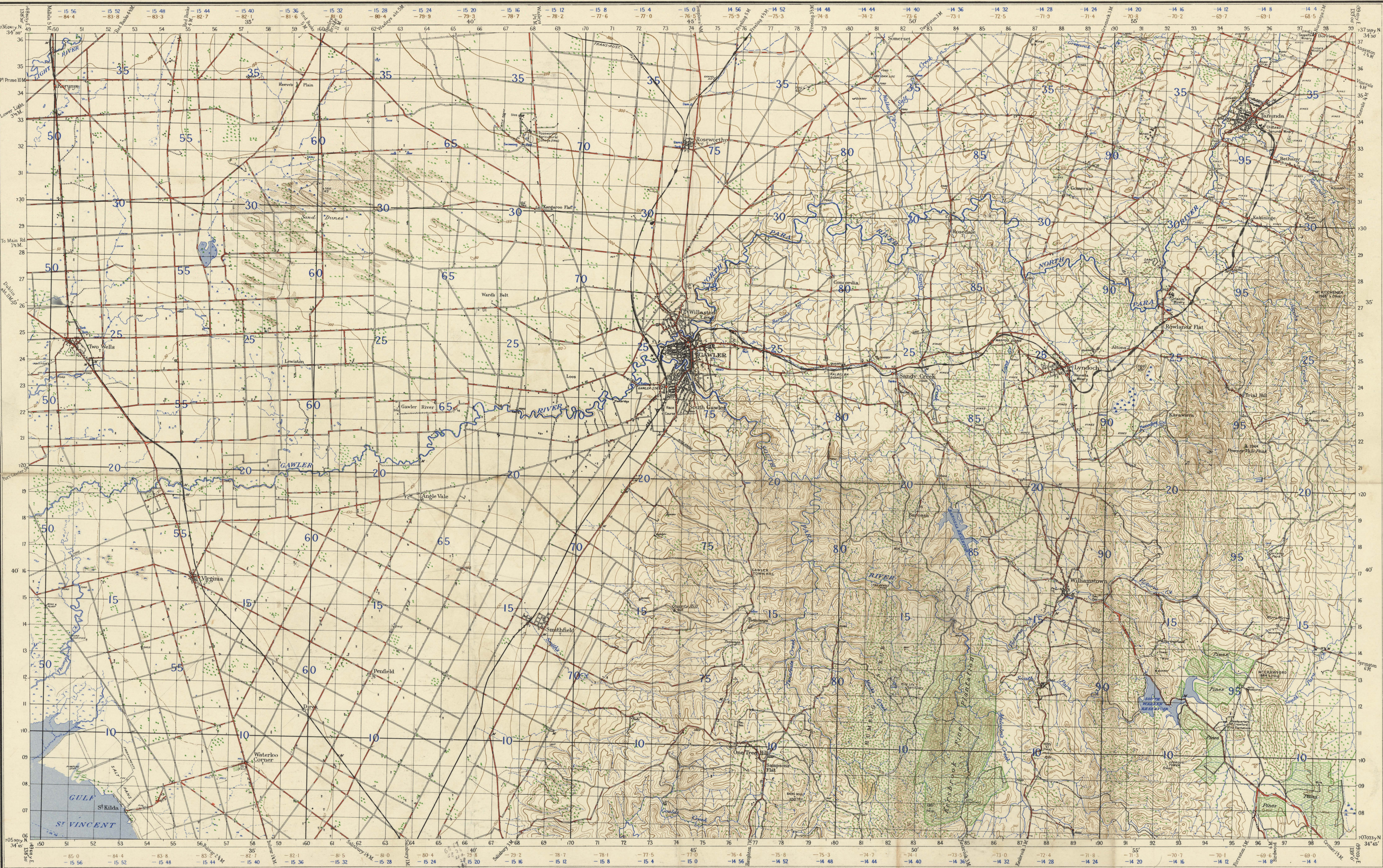


# SOUTH AUSTRALIA GAWLER

Convergence based  
on Longitude 141°E

NO 800 ZONE 6  
SHEET SOUTH 54  
M.V.N.E.W.

AUSTRALIA 1:63360



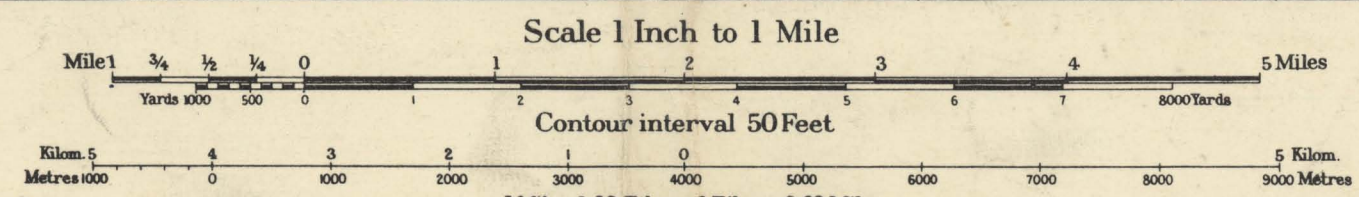
Prepared by Australian Section Imperial General Staff

The framework of this Map depends entirely upon the Main Geodetic Triangulation of S.A., supplemented by topographical triangulation by the Australian Survey Corps. Transverse Mercator Projection. Elevations in feet. Mean Sea Level. Port Adelaide Surveyed in 1935 by Australian Survey Corps with aid of Air Photos by Royal Australian Air Force.

Origin of Longitude, Sydney Observatory, 151° 12' 14.5"

Bridge (small except where shown as masonry or iron)	
Canal	
Water Hole	
Swamp or Marsh	
Creek	
Watercourse (non-perennial)	
Water Channel	
Railway (double line)	
Railway (single line)	

Light railway	
Embankment	
Cutting	
Post Office	
Post & Telegraph Office (in villages)	
First Class	
Second	
Third	
Fourth	
Roads impassable to M.T. in bad weather	



Track	
House	
Garage	
School	
Hotel	
Blacksmith's Shop (large)	
Church	
Mill or Factory	
Lighthouse	

Telegraph or Telephone line	
Wind Pump	
Cometary	
Flower	
Scrub	
Trig Station (and altitude)	
Intersected point (and altitude)	
Fulham Lines	
Contours	

TO GIVE A GRID REFERENCE ON THIS SHEET  
Pay attention to the smaller coordinate figures at the corners  
and margins. They are for finding sheet numbers 173  
PAY ATTENTION TO LARGER MARGINAL FIGURES AND TO  
THOSE PRINTED ON THE FACE OF THE MAP VIZ. 173

POINT QUARTZ HILL (TRIG)	
East	North
73	15
8	0
738	150
REFERENCE 738150	
Unit	Yard
Square	1000
Reference to nearest	100
Nearest similar reference distant	60 miles

NOTE The brown (contour) and blue (line correction) figures within the borders of this map are for Artillery purposes

Crown Copyright Reserved