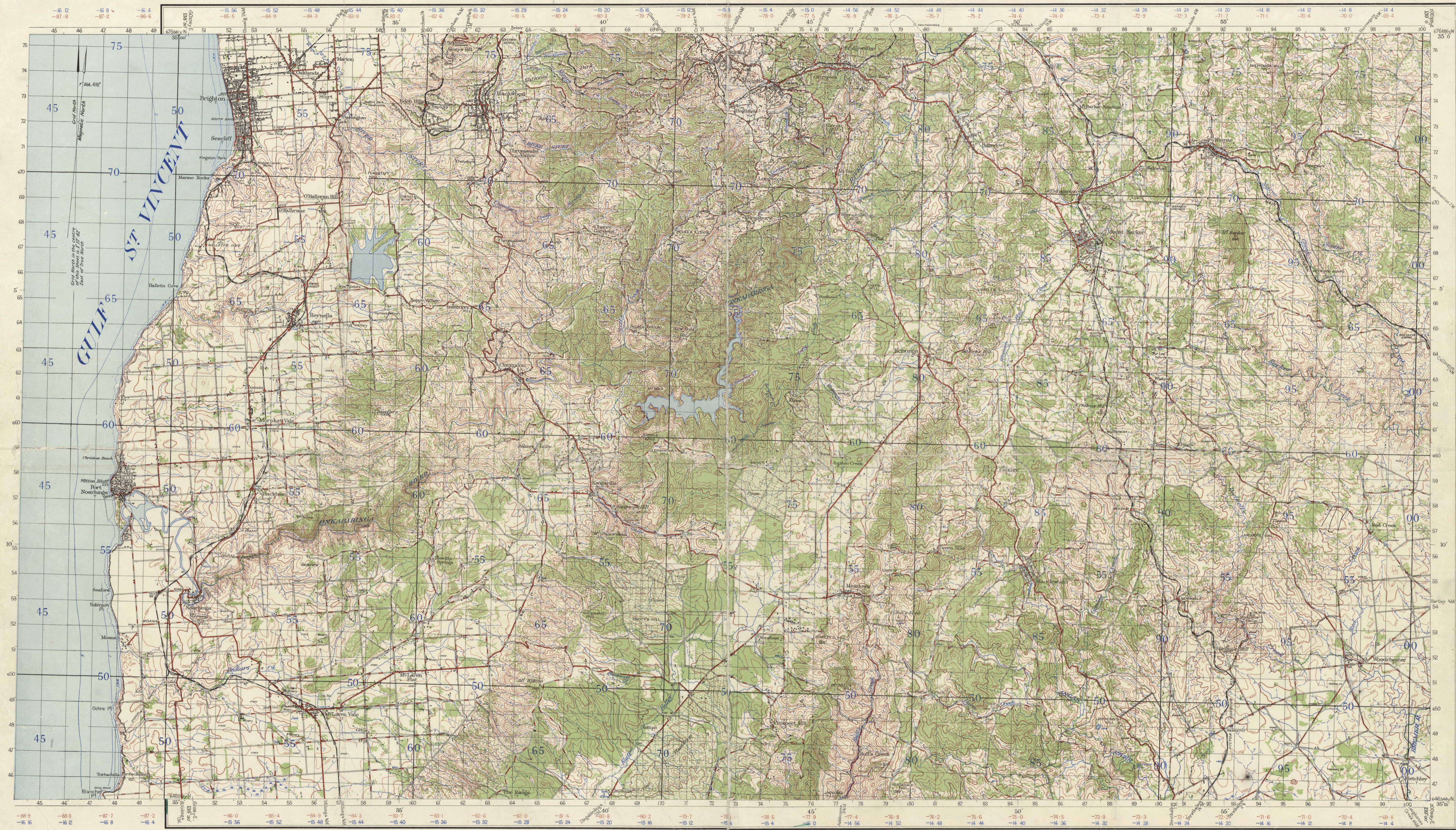


# SOUTH AUSTRALIA ECHUNGA

STATE LIBRARY  
MAP  
JUN 2001  
COLLECTION  
OF SOUTH AUSTRALIA

No 820 ZONE 6  
SHEET SOUTH 1:54  
S 11 N 82 W

AUSTRALIA 1:63,360



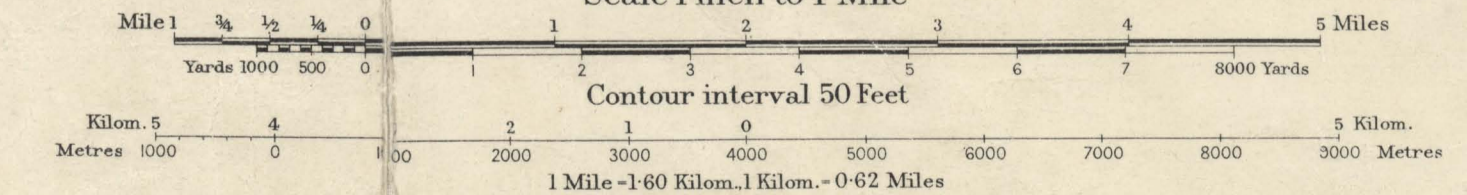
Prepared by Australian Section Imperial General Staff

The framework of this Map depends entirely upon the First and Second Order Triangulation as carried out by the Australian Survey Corps. Transverse Mercator Projection. Elevations in feet; Mean Sea Level, Port Adelaide. Surveyed in 1937 by the Australian Survey Corps with aid of Air Photos by the Royal Australian Air Force.

Origin of Longitude: Sydney Observatory, 151° 12' 17.85"

Drainage (solid where shown as masonry or iron)	—
Canal	—
Water-hole	—
Swamp or Marsh	—
Creek	—
Watercourse (non-perennial)	—
Water Channel	—
Railway (double line)	—
Railway (single line)	—
Light railway	—

Embankment	—
Cutting	—
Post Office	—
Post & Telegraph Office (in villages)	—
Roads	—
First Class	—
Second	—
Third	—
Fourth	—
Roads impassable to M.T. in bad weather	—
Stone Wall	—



INDEX TO ADJOINING SHEETS

GULF OF ST. VINCENT	ADELAIDE	MANNUM
YANKALILLA	ECHUNGA	MOBILONG
MILANG	ALEXANDRIA	

Track	—
House	—
Garage	—
School	—
Hotel	—
Blacksmith's Shop (Forge)	—
Church	—
MILL or Factory	—
Lighthouse	—
Telegraph or Telephone line	—

Wind Pump	—
Cemetery	—
Scrub	—
Timber	—
Tray Stations	—
and altitude	—
Fourth	—
Fisheries	—
Contours	—

TO GIVE A GRID REFERENCE ON THIS SHEET

Pay attention to larger marginal figures and to those printed on the face of the map viz. 52

POINT MT BARKER (TRIG)

East	92	North	66
East	92	North	66
East	92	North	66

REFERENCE 926685

Unit	Yard
Square	100
Reference to nearest	100
Nearest similar reference distant	60 miles

NOTE The brown (convergence) and blue lines correction figures within the borders of this map are for Artillery purposes. Convergence based on Longitude 141° E.

Crown Copyright Reserved