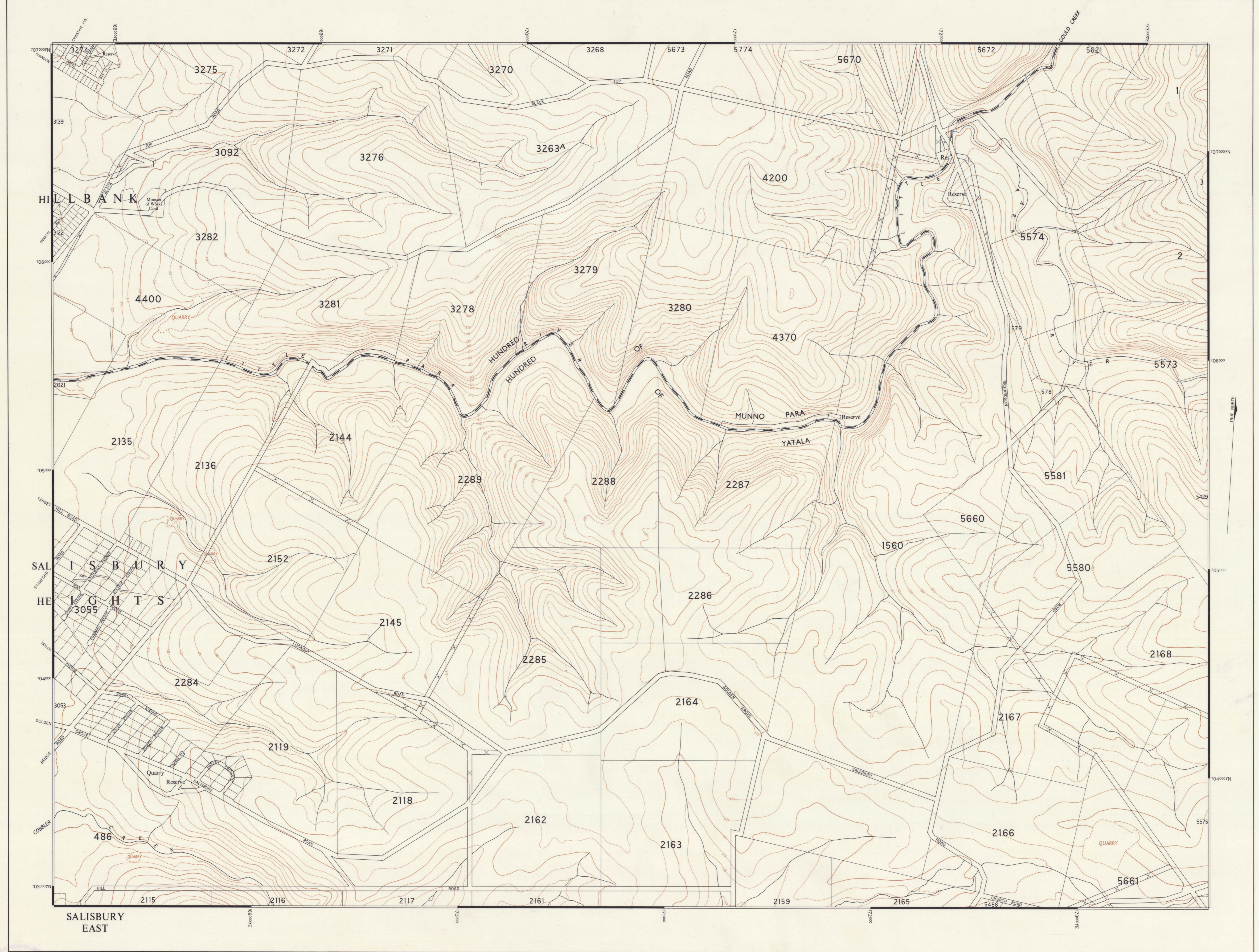


LITTLE PARA
SOUTH AUSTRALIA

ADELAIDE AND ENVIRONS SERIES
SHEET F6 FIRST EDITION 1963

1:7920



CONTROL Triangulation and traverse by S.A. Department of Lands based on Sydney Observatory. Latitude 37° 51' 41.0" S. Longitude 151° 12' 17.85" E.

COMPILED Compiled from enlargements of the 1:1984 Adelaide and Environs Series. This series was compiled in the Office of the Surveyor General from ground survey and aerial photography by Departments of Lands, Aerial Survey Unit. Mission No. S.A. 50, 215, December 1956. Topographic detail by Wild A5 and A4 Stereo Pictorial.

CARTOGRAPHY Cartography by the Drawing Office, Department of Lands, under direction of the Surveyor General.

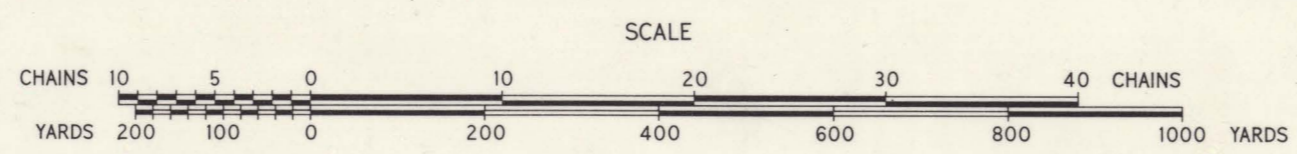
PROJECTION Transverse Mercator. Australian National Grid.

CONTOURS Contour interval 25 feet. Datum Mean Sea Level Port Adelaide.

PHOTOLITHOGRAPHY H.J. Wall, Government Photolithographer, Adelaide.

INDEX TO ADJOINING SHEETS

F 5 SALISBURY	F 6 LITTLE PARA
G 5 PARAFIELD	G 6 GOLDEN GROVE



LITTLE PARA
SHEET F 6

HUNDREDS OF YATALA
AND MUNNO PARA

830
1:7,920
Little
Para