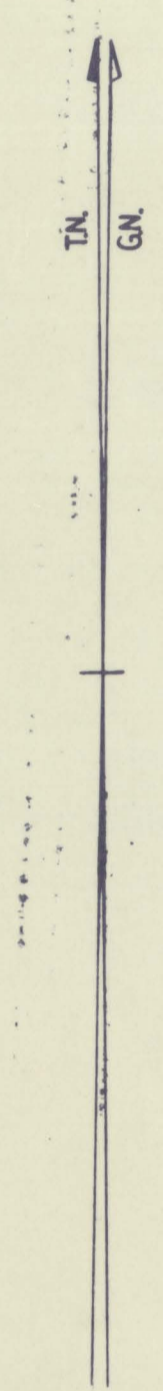
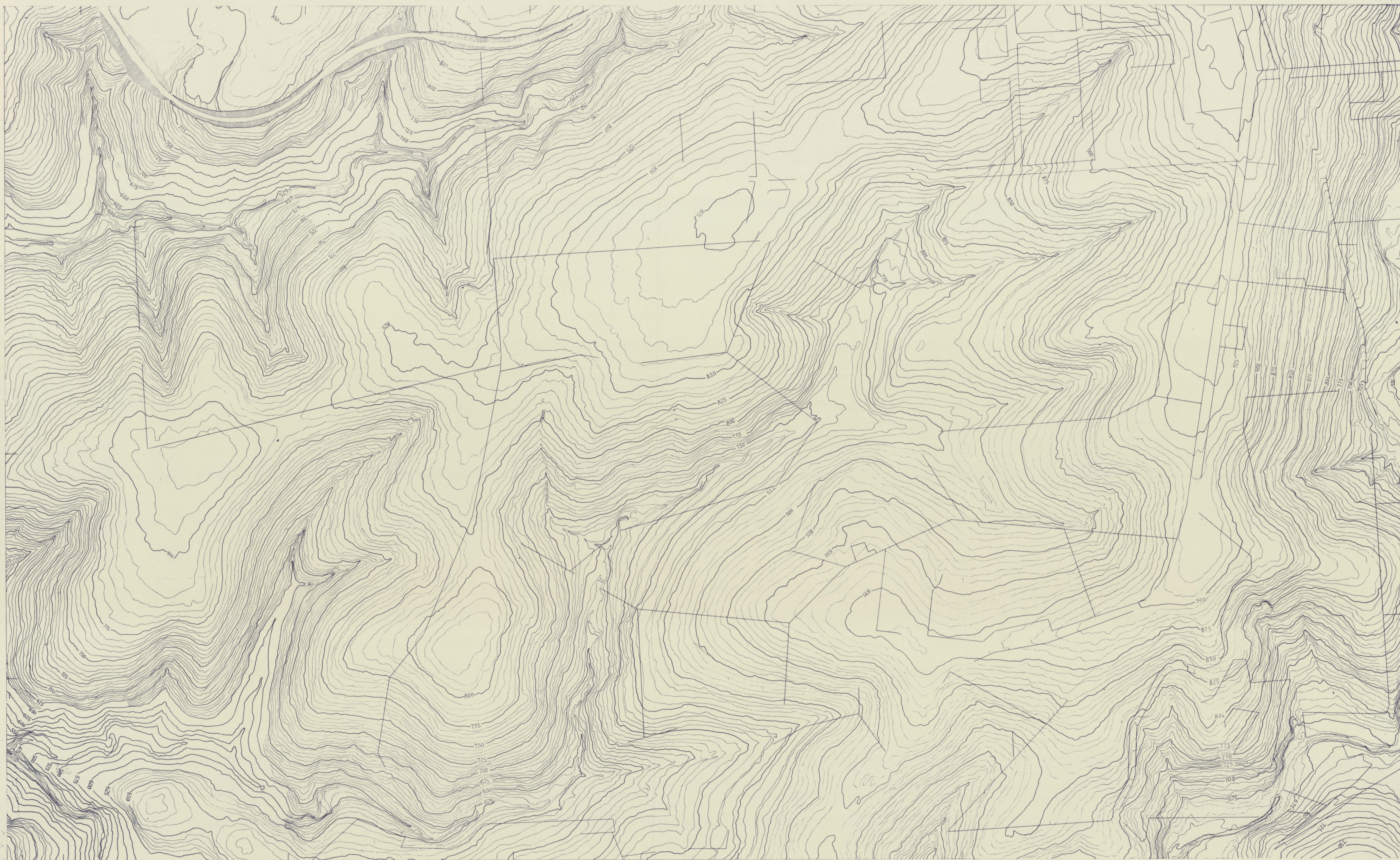


EDEN HILLS, COROMANDEL VALLEY ETC.
SCALE 4 CHAINS TO ONE INCH

ZONE 6
SHEET 820 A1
D2



This map is prepared in accordance with Standard Specification for Horizontal and Vertical Control and Standards of map Accuracy published by the National Mapping Council Feb. 1953

Horizontal Check:
No point should be more than ± 4 feet from its true position as determined on well defined features.

Vertical Check:
Not more than 10% of points checked should be in error by more than $\pm 2\frac{1}{2}$ feet from true elevation and no point more than ± 5 feet from true elevation as determined on well defined features.

Datum of heights 100 feet below L.W.O.S.T.

Prepared in the office of the Surveyor General from aerial photographs. Film 78 Neg. Nos. 5049-5052 & 5072-5075 plotted on Wild A5 Autograph.
Date of Photography 15. 12. 52.

| | | |
|-------|------------------------|-------|
| A1 B3 | A1 B4 | A2 B5 |
| A1 D1 | ZONE 6 820 A1 D2 | A2 C1 |
| A1 D3 | A1 D4 | A2 C3 |

820 A1 D2

EDEN HILLS

| | | | |
|----------------------------|---------|------|--------------|
| DEPT. LANDS PHOTOGRAM SEC. | PLOTTED | PK | SCALE 1:3168 |
| Blackwood Blair | TRACED | DATE | |
| Echuanga 820 A1 D2 | CHECKED | | |
| | APPRO. | | |