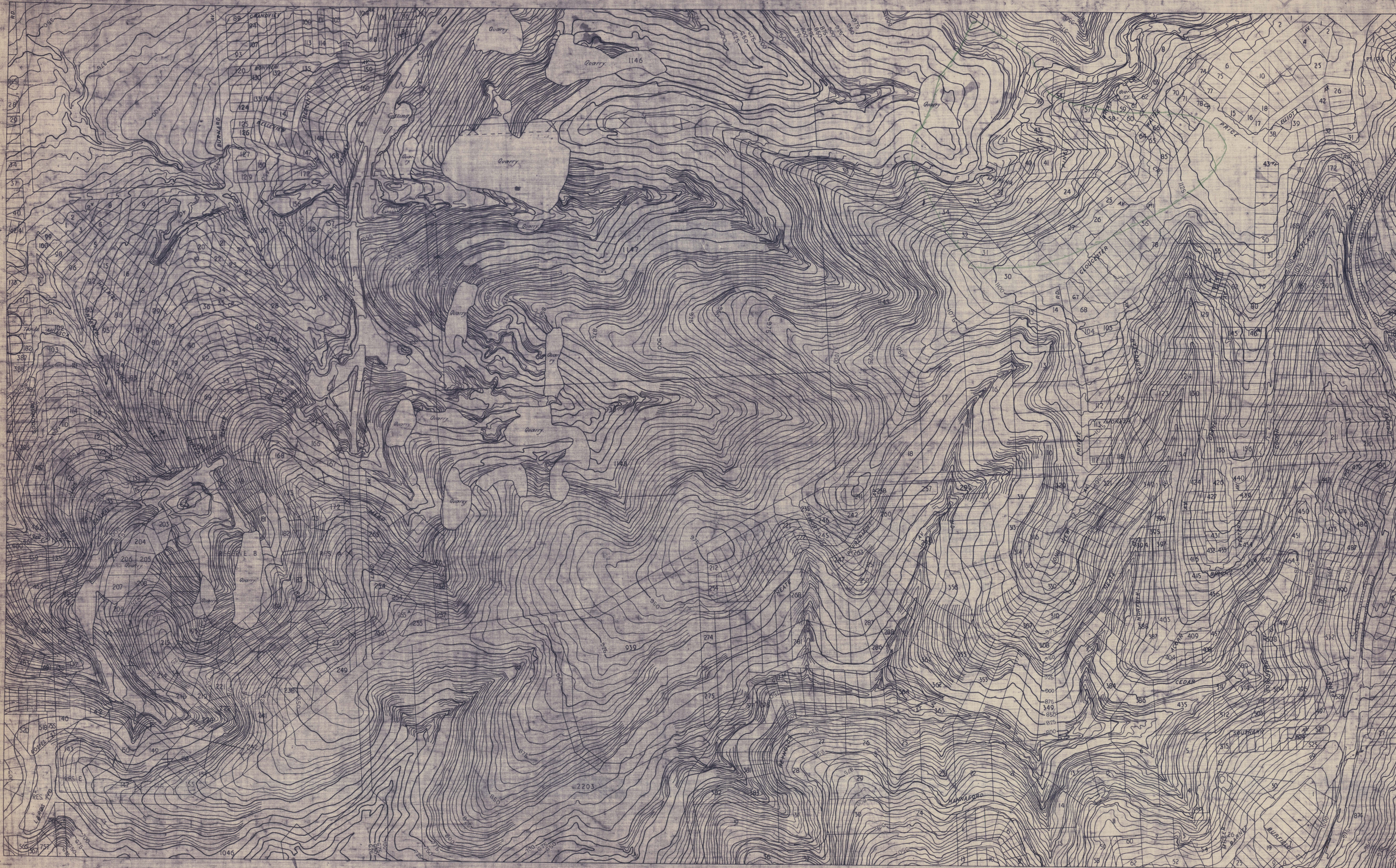


PANORAMA ESTATE, BELAIR, CREST ALTA, ETC.  
SCALE 4 CHAINS TO ONE INCH



ZONE 6  
820 A1  
B2



This map is prepared in accordance with Standard Specification for Horizontal and Vertical Control and Standards of map Accuracy published by the National Mapping Council in Feb. 1955.

Horizontal Check

No point should be more than  $\pm 4$  feet from its true positions as determined on well defined features.

Vertical Check

Not more than 10% of points checked should be in error by more than  $\pm 2\frac{1}{2}$  feet from true elevation and no point more than  $\pm 5$  feet from true elevation as determined on well defined features.

Datum of Heights 100 feet below M.W.S.T.

Prepared in the office of the Surveyor General from aerial photographs Film 78 Neg. Nos. 5045 to 5048 & 5068 to 5070, plotted on Wild A5 Autograph.

C3 D3	C3 D4	C4 C3
A1 B1	ZONE 6 820	A1 B2
A1 B3	A1 B4	A2 A3

PANORAMA

820 A1 B2