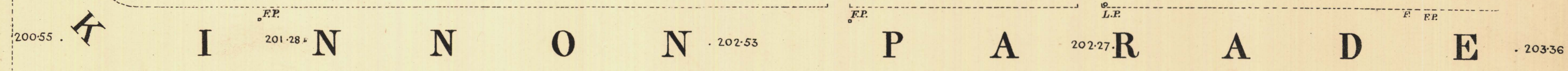
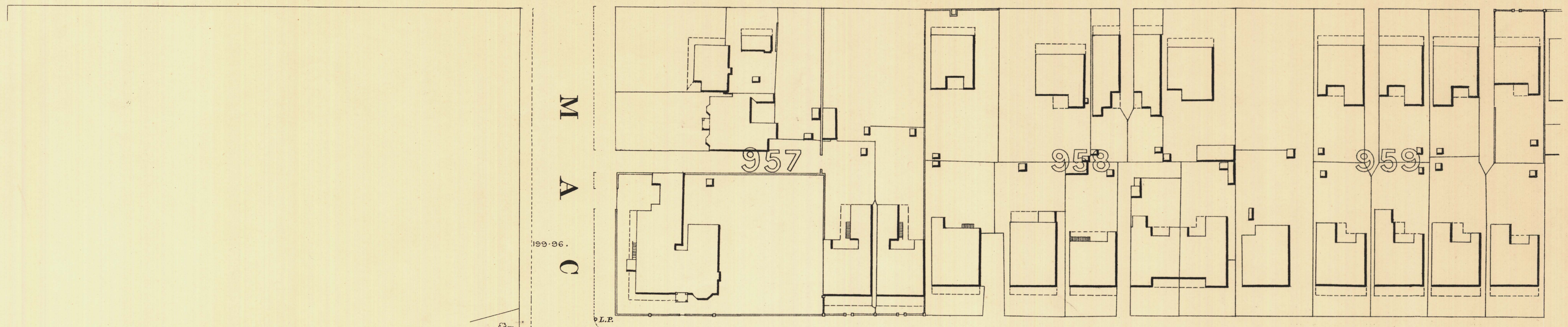
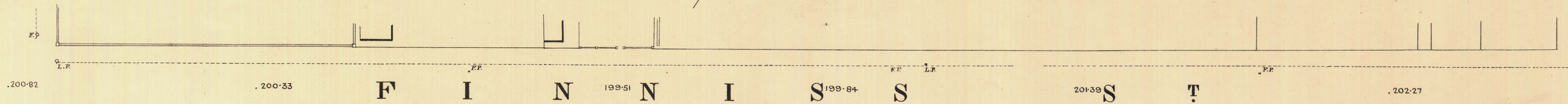
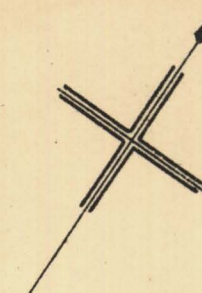


| | | |
|-----|-----|-----|
| 120 | 119 | 118 |
| 121 | 122 | 123 |
| 125 | | |



P A R K L A N D S



L. Smith Mayor

Thomas W. Smith Town Clerk

100 Feet 50 0 200 300 Feet. Scale Forty Feet to One Inch

SURVEYOR GENERAL'S OFFICE, ADELAIDE. *Phase 2. Ground, Photo-Engraving*

REFERENCE

| | | | |
|-----------------------|--------------|--|--------------|
| Town Acres shown thus | — [Symbol] — | Fire Plugs shown thus | — [Symbol] — |
| Stone Buildings | — [Symbol] — | Stop-cocks | — [Symbol] — |
| Brick do | — [Symbol] — | Stand-pipes | — [Symbol] — |
| Wood and Iron do | — [Symbol] — | Lamp-posts | — [Symbol] — |
| Pillar Post-offices | — [Symbol] — | Telegraph-posts | — [Symbol] — |
| Levels | — [Symbol] — | Datum 100 Feet below Low-water at Port Adelaide. | |

Charles W. Smith
City Engineer
Licensed Surveyor R.P.A.