

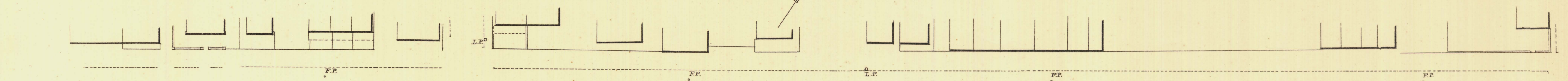
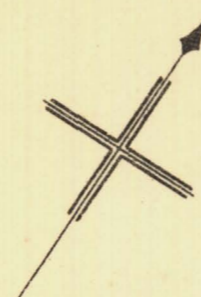
NORTH ADELAIDE

Sheet N<sup>o</sup> 123.

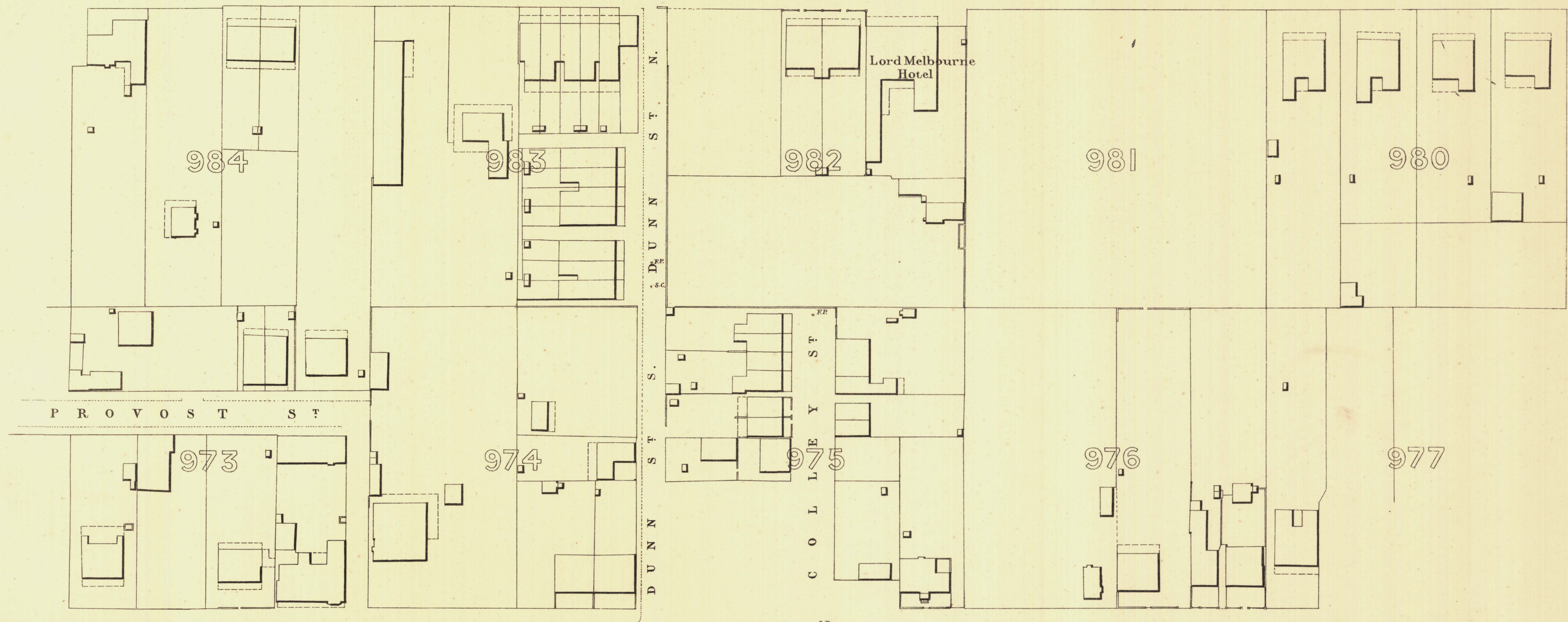
MAC DONNELL WARD

KEY TO ADJOINING SHEETS

114	115	116
119	118	117
122	121	124



MELBOURNE STREET



MAC KINNON PARADE

PARKLANDS



*L. Smith* Mayor

*Thomas Wornout* Town Clerk

Scale Forty Feet to One Inch

SURVEYOR GENERAL'S OFFICE, ADELAIDE.

REFERENCE

Town Acres shown thus	141	Fire Plugs shown thus	FP
Stone Buildings	—	Stop-cocks	* S.C.
Brick do	—	Stand-pipes	— S.P.
Wood and Iron do	—	Lamp-posts	— L.P.
Pillar Post-offices	— P.O.	Telegraph-posts	— T.P.
Levels	— 229-31	Datum 100 Feet below Low-water at Fort Adelaide.	

*Charles W. Smith*  
City Engineer  
Licensed Surveyor R.P.A.