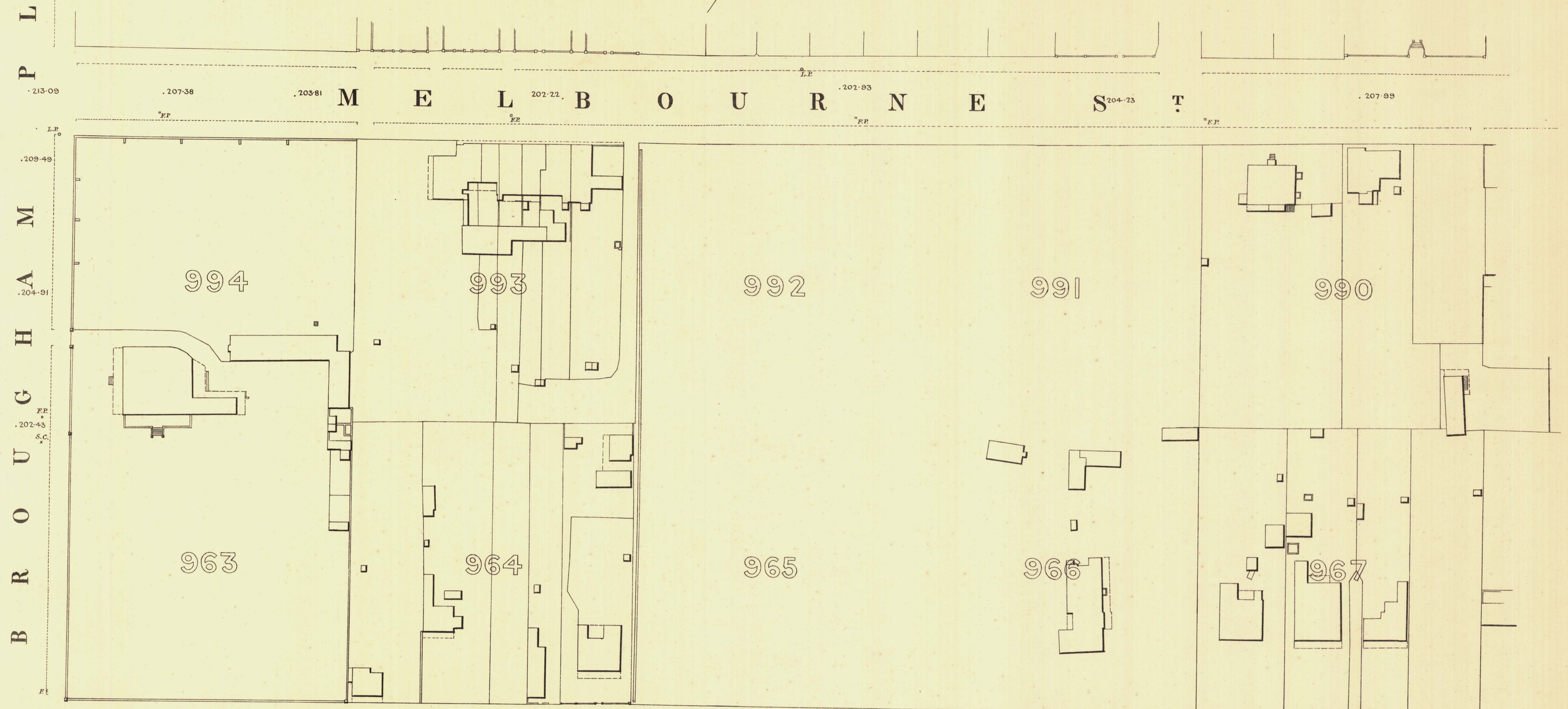
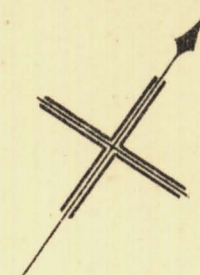
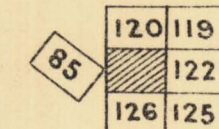


NORTH ADELAIDE

MAC DONNELL WARD

KEY TO ADJOINING SHEETS

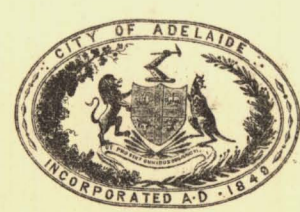
Sheet N^o 121



PL
M
H
A
G
U
B
R
O
S
T

MACKINNON PARADE
FINNISST

PARKLANDS



L. Smith Mayor

Thomas W. Smith Town Clerk

Scale Forty Feet to One Inch

SURVEYOR GENERAL'S OFFICE, ADELAIDE. Drawn by G. G. G. Photographed by G. G. G.

REFERENCE

Town Acres shown thus		Fire Plugs shown thus	□ F.
Stone Buildings	▨	Stop-cocks	□ S.C.
Brick do	▩	Stand-pipes	□ S.P.
Wood and Iron do	▧	Lamp-posts	□ L.P.
Pillar Post-offices	□ P.O.	Telegraph-posts	□ T.P.
Levels	○	Datum, 100 Feet below Low water at Port Adelaide.	

Charles W. Smith
City Engineer
Licensed Surveyor R.P.A.