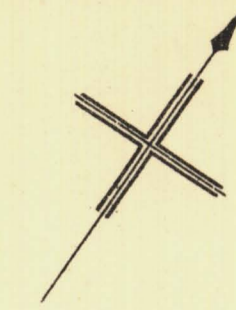
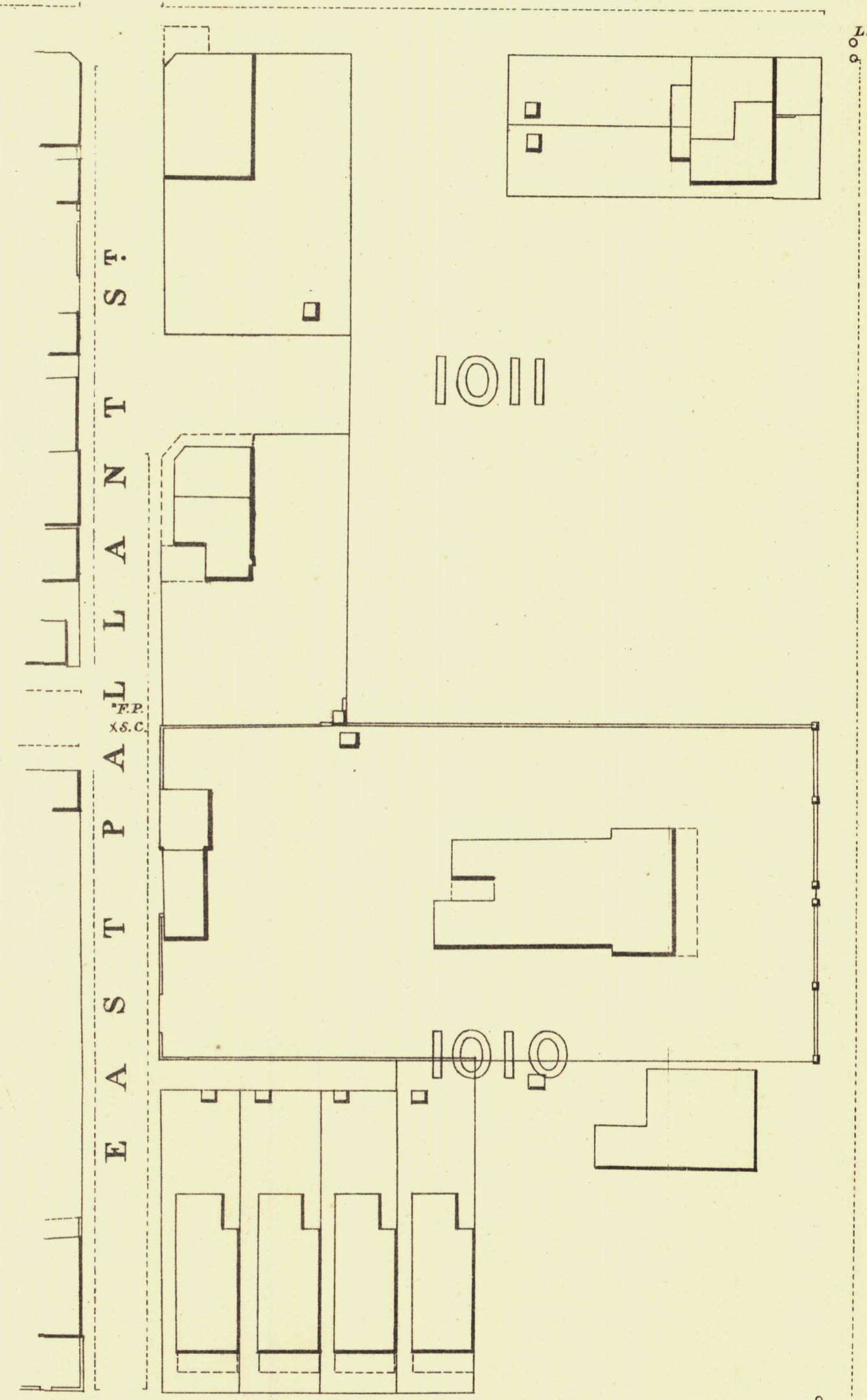


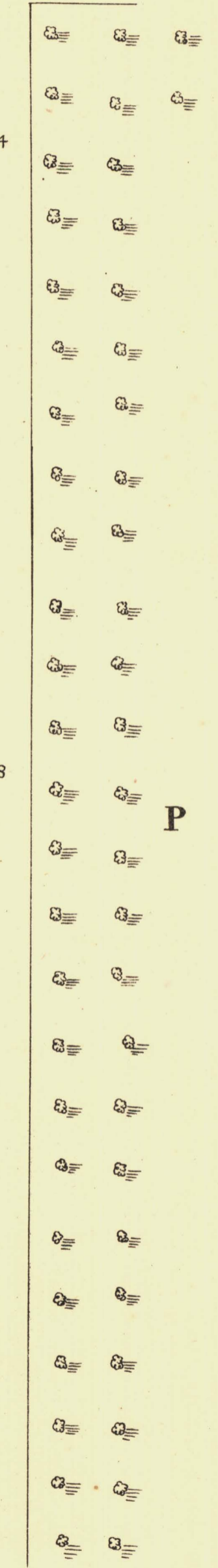
114	115	116
119	118	
122	123	124



STANLEY ST



STANLEY ST



OLIVE PARK LANDS
PLANTATION

MELBOURNE ST



L. Smith Mayor

Thomas W. Smith Town Clerk

Scale Forty Feet to One Inch

100 200 300 Feet.

REFERENCE

Town Acres shown thus	— [Symbol] —	Fire Plugs shown thus	— [Symbol] —	G.F.P.
Stone Buildings	— [Symbol] —	Stop-cocks	— [Symbol] —	S.C.
Brick do	— [Symbol] —	Stand-pipes	— [Symbol] —	S.P.
Wood and Iron do	— [Symbol] —	Lamp-posts	— [Symbol] —	G.L.P.
Pillar Post-offices	— [Symbol] —	Telegraph posts	— [Symbol] —	G.T.P.
Levels	— [Symbol] —	Datum 100 Feet below Low-water at Port Adelaide		

Charles W. Smith
City Engineer
Licensed Surveyor R.P.A.