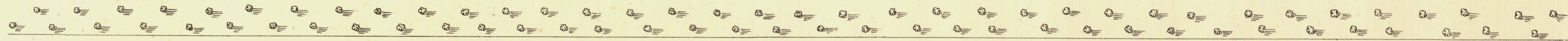
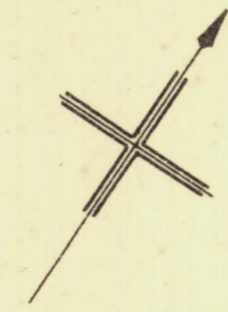
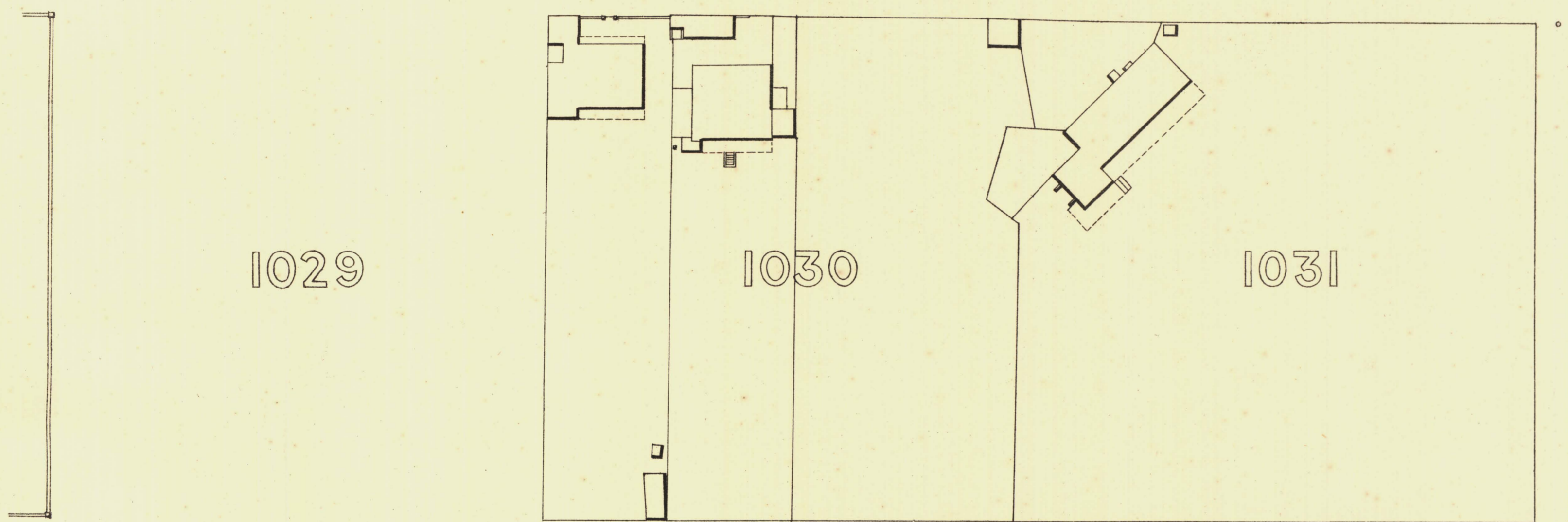


113	115
120	118
121	123

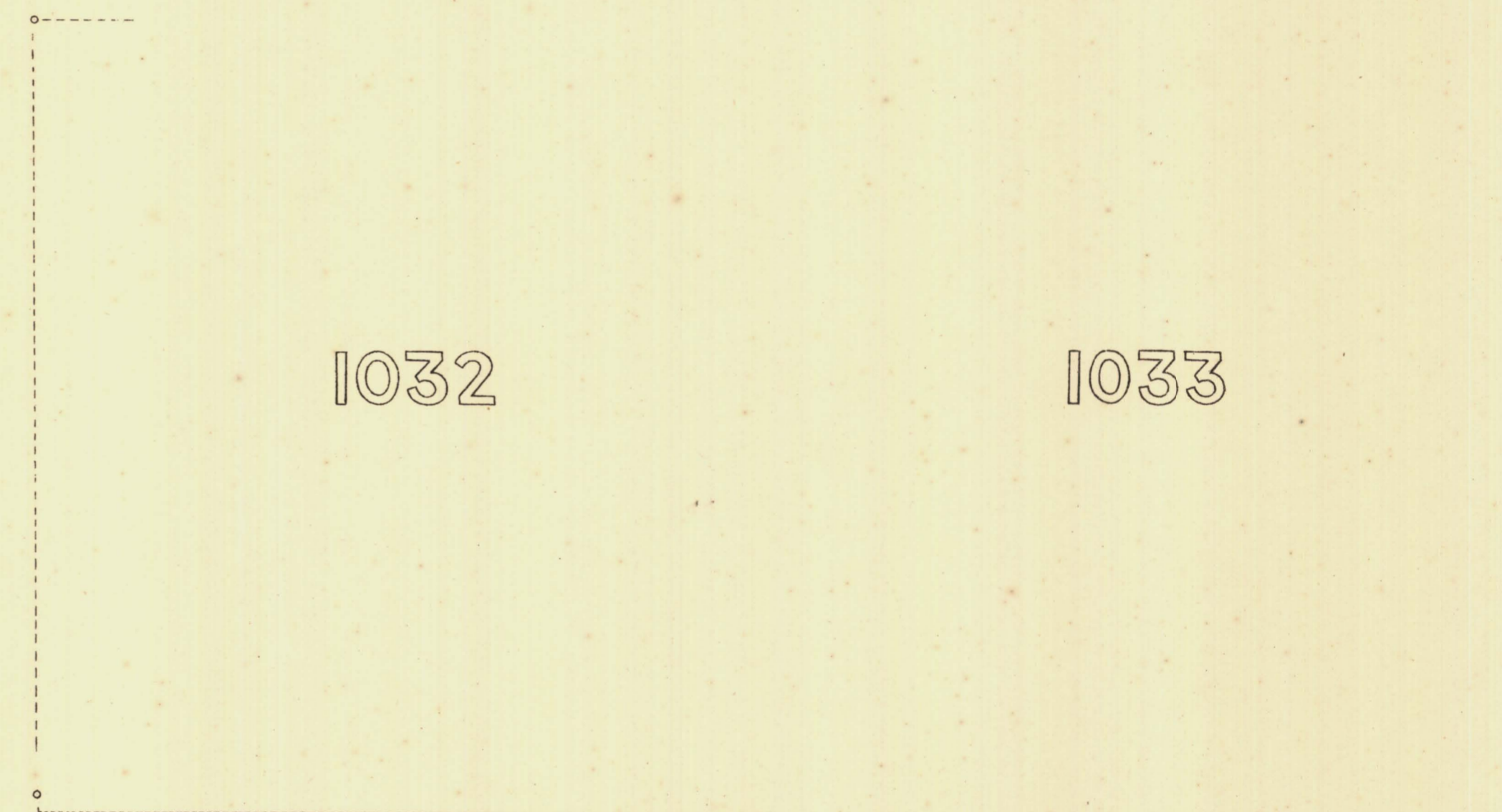
P A R K L A N D S



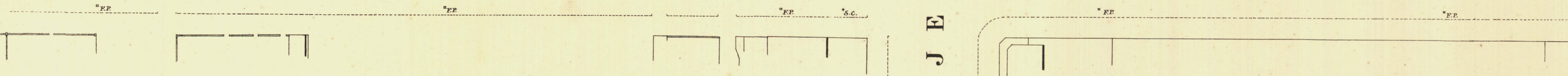
K I N G S T O N T E R



J E R N I N G H A M S T.



S T A N L E Y S T.



*L. Smith* Mayor

*Thomas W. Smith* Town Clerk

100 Feet 50 0 200 300 Feet

Scale Forty Feet to One Inch  
SURVEYOR GENERAL'S OFFICE, ADELAIDE. Drawn & Engraved, Photo-lithographed.

REFERENCE

Town Acres shown thus - [diagonal lines]	Fire Plugs shown thus - [circle with cross]
Stone Buildings - [hatched pattern]	Stop-cocks - [circle with dot]
Brick do - [cross-hatched pattern]	Stand-pipes - [circle with vertical lines]
Wood and Iron do - [horizontal lines]	Lamp posts - [circle with horizontal lines]
Pillar Post-offices - [circle with vertical lines]	Telegraph posts - [circle with horizontal lines]
Levels - [dashed line]	Datum 100 Feet below Low-water at Port Adelaide.

*Charles W. Smith*  
City Engineer  
Licensed Surveyor R.P.A.