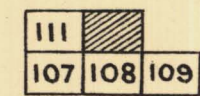


NORTH ADELAIDE

Sheet N^o 110.

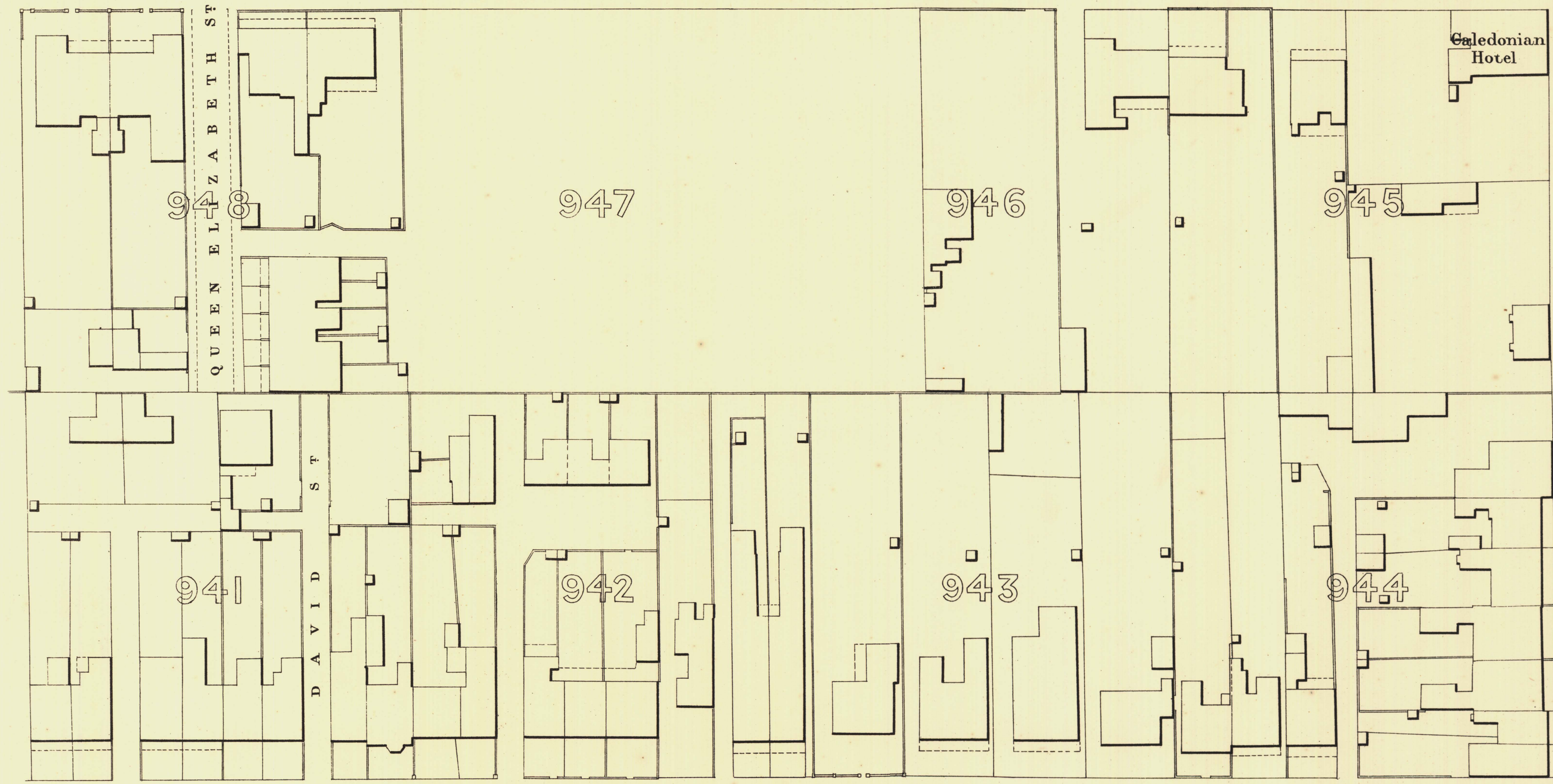
ROBE WARD

KEY TO ADJOINING SHEETS

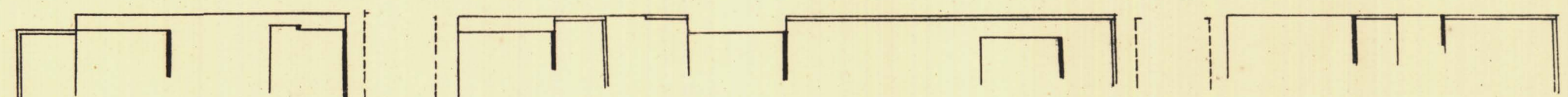
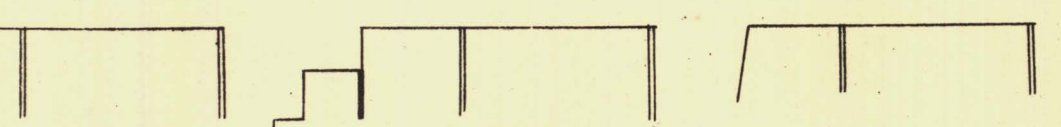


P A R K L A N D S

B A R T O N T E R R A



C H I L D E R S T



T. Smith Mayor

Thomas W. Smith Town Clerk

Scale Forty Feet to One Inch

SURVEYOR GENERAL'S OFFICE, ADELAIDE, DRAWN BY S. CHAMBERLAIN, PHOTO-LITHOGRAPHED

REFERENCE

Town Acres shown thus		Fire Plugs shown thus	
Stone Buildings		Stop-cocks	
Brick do		Stand-pipes	
Wood and Iron do		Lamp-posts	
Fillar Post-offices		Telegraph-posts	
Levels		Datum, 100 Feet below Low-water at Port Adelaide.	

Charles W. Smith
City Engineer
Licensed Surveyor R.P.A.