

Sheet N<sup>o</sup> 109.

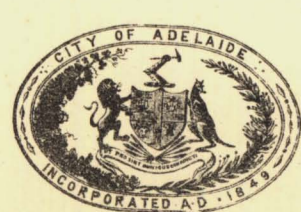
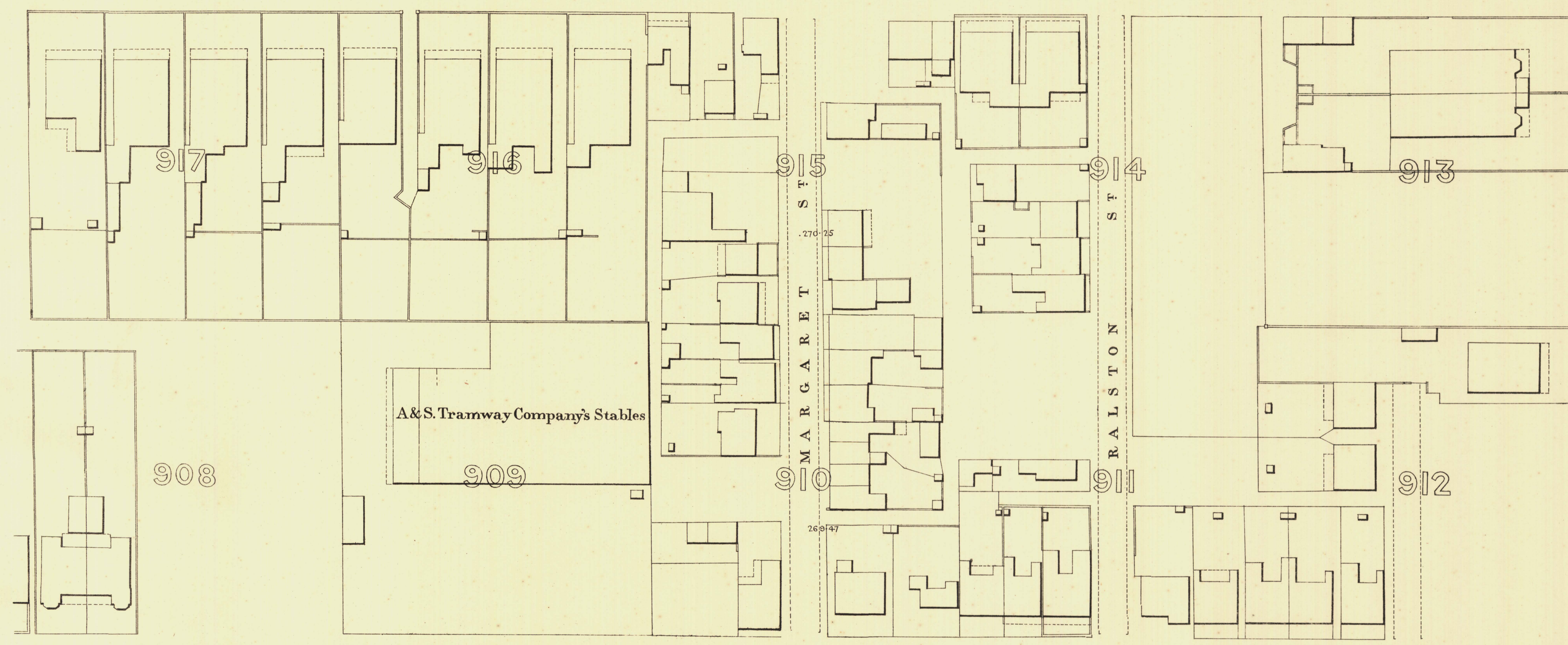
107	108
103	102 101
98	99 100

P A R K L A N D S

B A R T O N T E R

G O V E R S T R E E T

S  
D  
N  
A  
L  
K  
A  
P  
L



*L. Smith*  
Mayor

*Thomas Hornum*  
Town Clerk

100 Feet 50 0 200 300 Feet.  
Scale Forty Feet to One Inch

SURVEYOR GENERAL'S OFFICE, ADELAIDE. *Amos S. Crawford, Photolithographer.*

REFERENCE  
 Iron Acres shown thus [Symbol] Fire Plugs shown thus [Symbol] F.P.  
 Stone Buildings [Symbol] Stop-cocks [Symbol] S.C.  
 Brick do [Symbol] Stand-pipes [Symbol] S.P.  
 Wood and Iron do [Symbol] Lamp-posts [Symbol] L.P.  
 Pillar Post-offices [Symbol] Telegraph-posts [Symbol] T.P.  
 Levels [Symbol] Datum 100 Feet below Low-water at Port Adelaide.

*Charles W. Smith*  
City Engineer  
Licensed Surveyor R.P.A.