

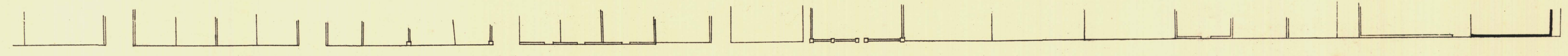
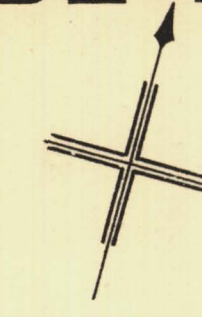
NORTH ADELAIDE

Sheet N^o 108.

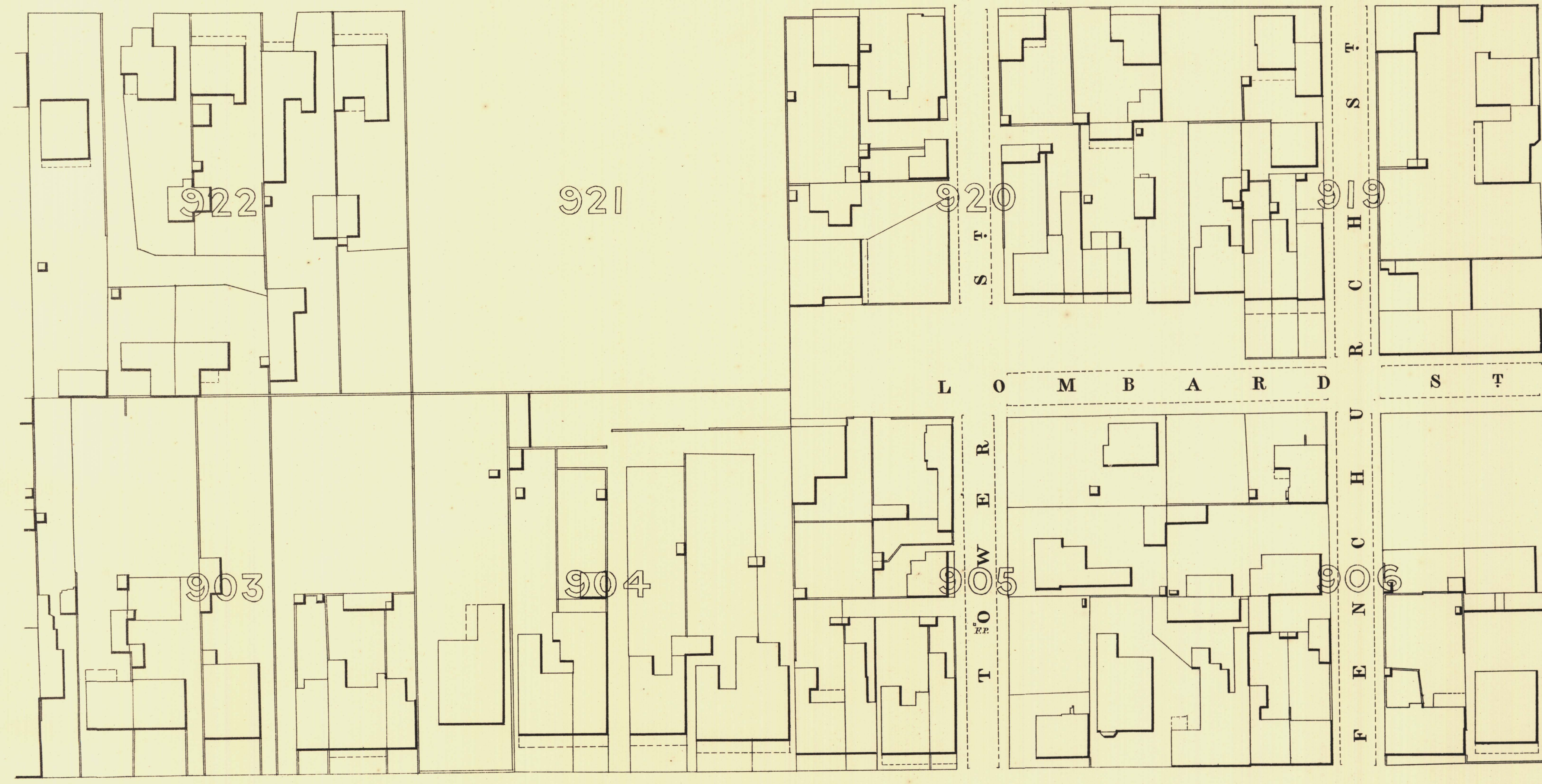
ROBE WARD

KEY TO ADJOINING SHEETS

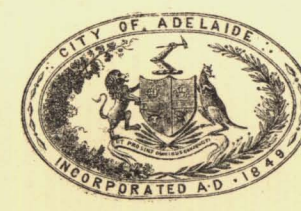
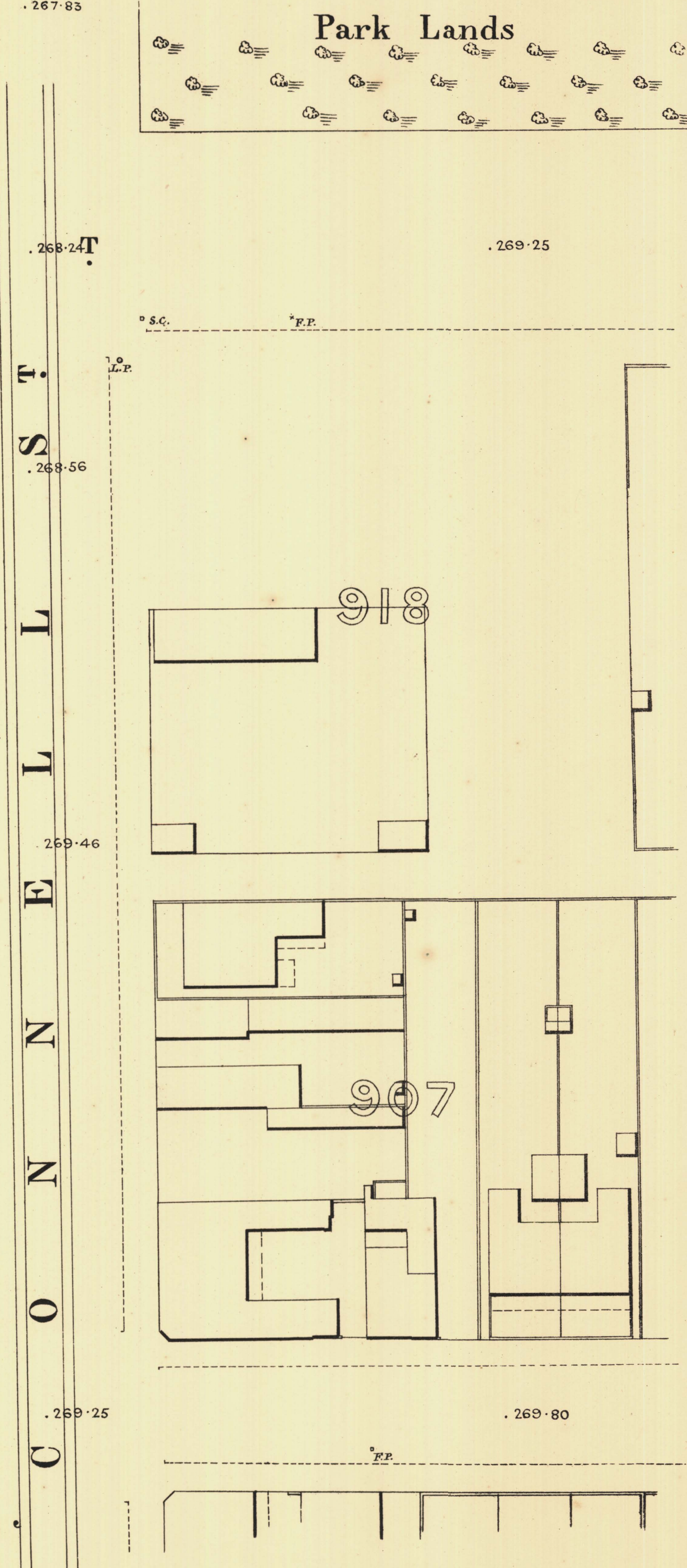
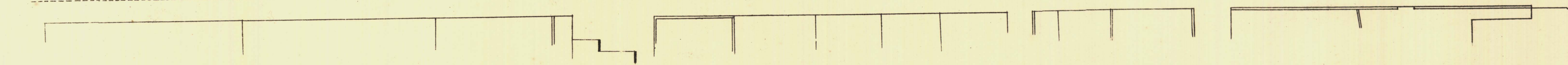
111	110
107	109
103	102 101



.264-60 C 265-26 H I L D 266-73 E R S .267-34 S



.263-66 .264-45 G O V 265-83 E R .267-45 S T



L. Smith
Mayor

Thomas ...
Town Clerk

Scale Forty Feet to One Inch

SURVEYOR GENERAL'S OFFICE, ADELAIDE. Drawn & Engraved, Photo-lithographed.

REFERENCE

Town Areas shown thus	--- ---	Fire Plugs shown thus	o.F.P.
Stone Buildings	--- ---	Stop-cocks	o.S.C.
Brick do	--- ---	Stand-pipes	o.S.P.
Wood and Iron do	--- ---	Lamp-posts	o.L.P.
Pillar Post-offices	o.P.O.	Telegraph posts	o.T.P.
Levels	--- ---	Datum, 100 Feet below Low-water at Port Adelaide.	229-31

Charles W. Smith
City Engineer
Licensed Surveyor R.P.A.