

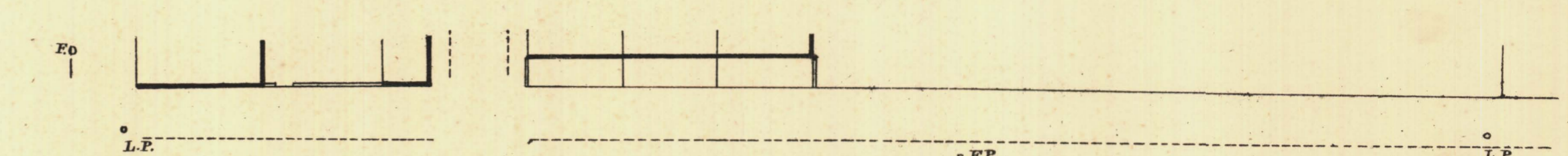
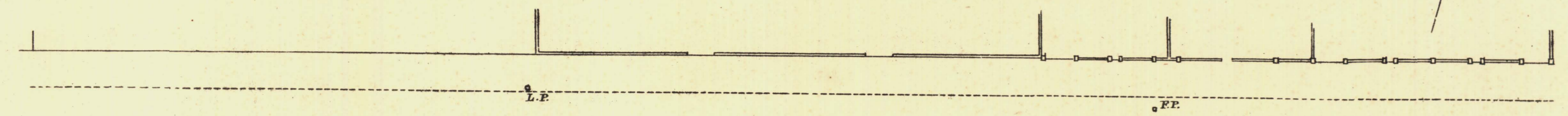
NORTH ADELAIDE

ROBE WARD

KEY TO ADJOINING SHEETS

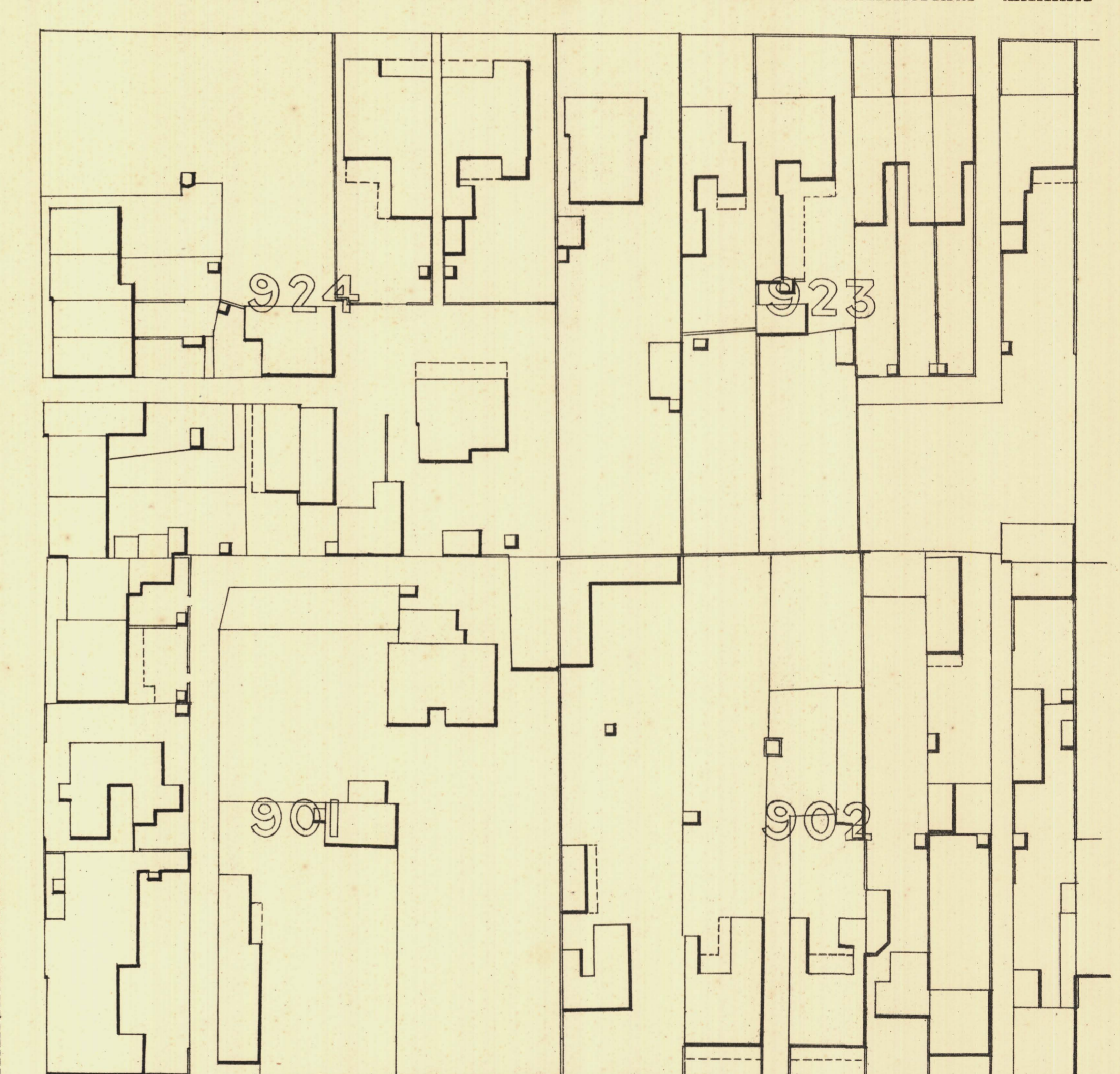
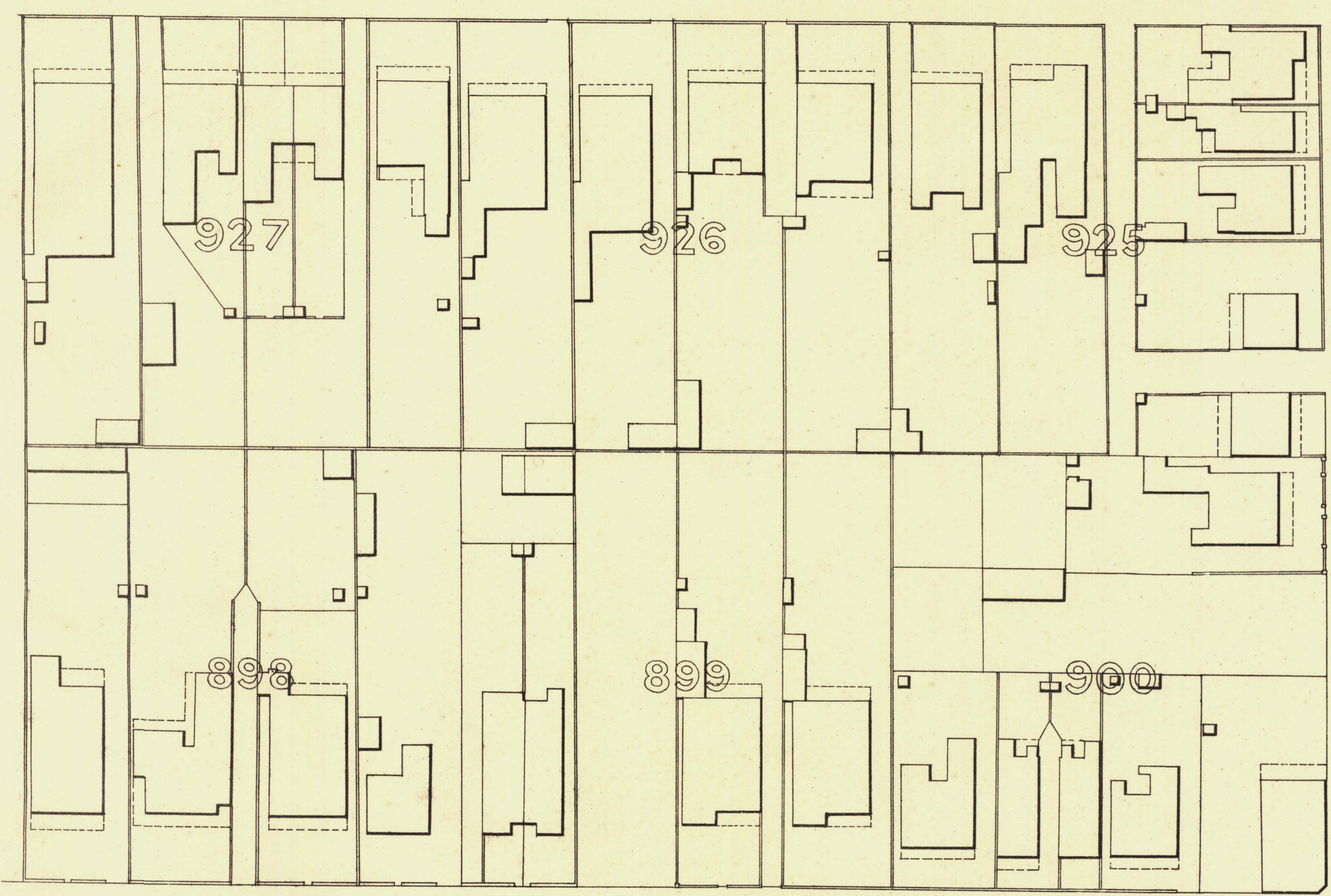
Sheet No 107

112	111	110
106		108
104	103	102



CHILDERS

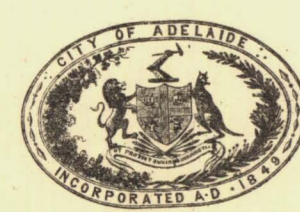
STREET



BUXTON

STREET

GOVERST



T. Smith Mayor

Thomas W. Smith Town Clerk

Scale Forty Feet to One Inch

SURVEYOR GENERAL'S OFFICE, ADELAIDE.

REFERENCE

Town Areas shown thus	1-4	Fire Flays shown thus	oFP
Stone Buildings	□	Stop-cocks	* S.C.
Brick do	□	Stand pipes	o S.P.
Wood and Iron do	□	Lamp-posts	o L.P.
Pillar Post-offices	o P.O.	Telegraph posts	o T.P.
Levels	225-31	Datum 100 Feet below Low-water at Port Adelaide.	

Walter W. Smith
City Engineer
Licensed Surveyor R.P.A.