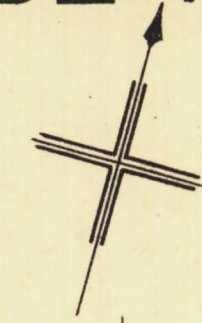
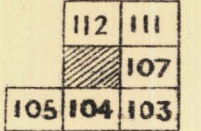


NORTH ADELAIDE

ROBE WARD

KEY TO ADJOINING SHEETS

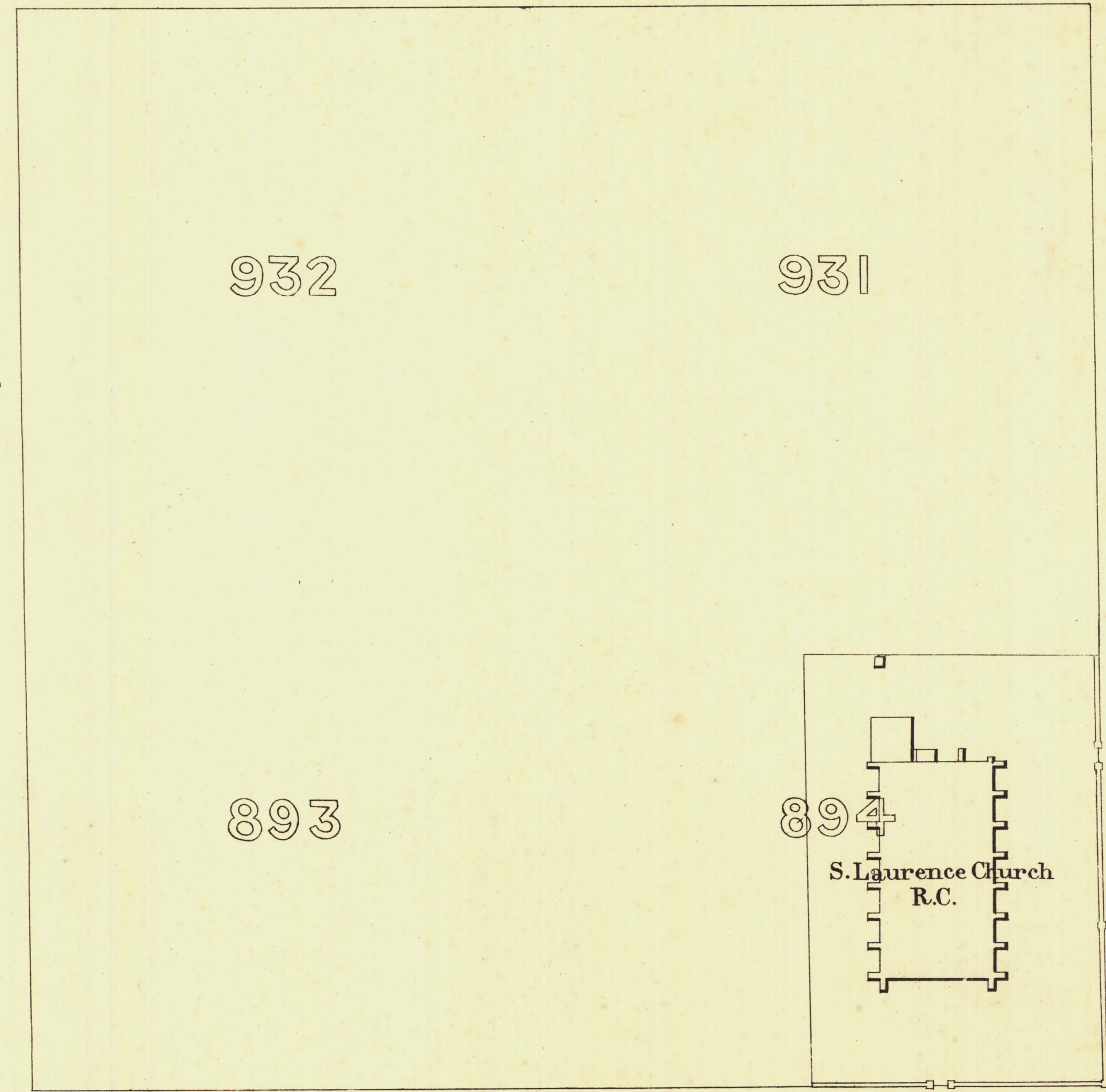
Sheet N<sup>o</sup> 106.



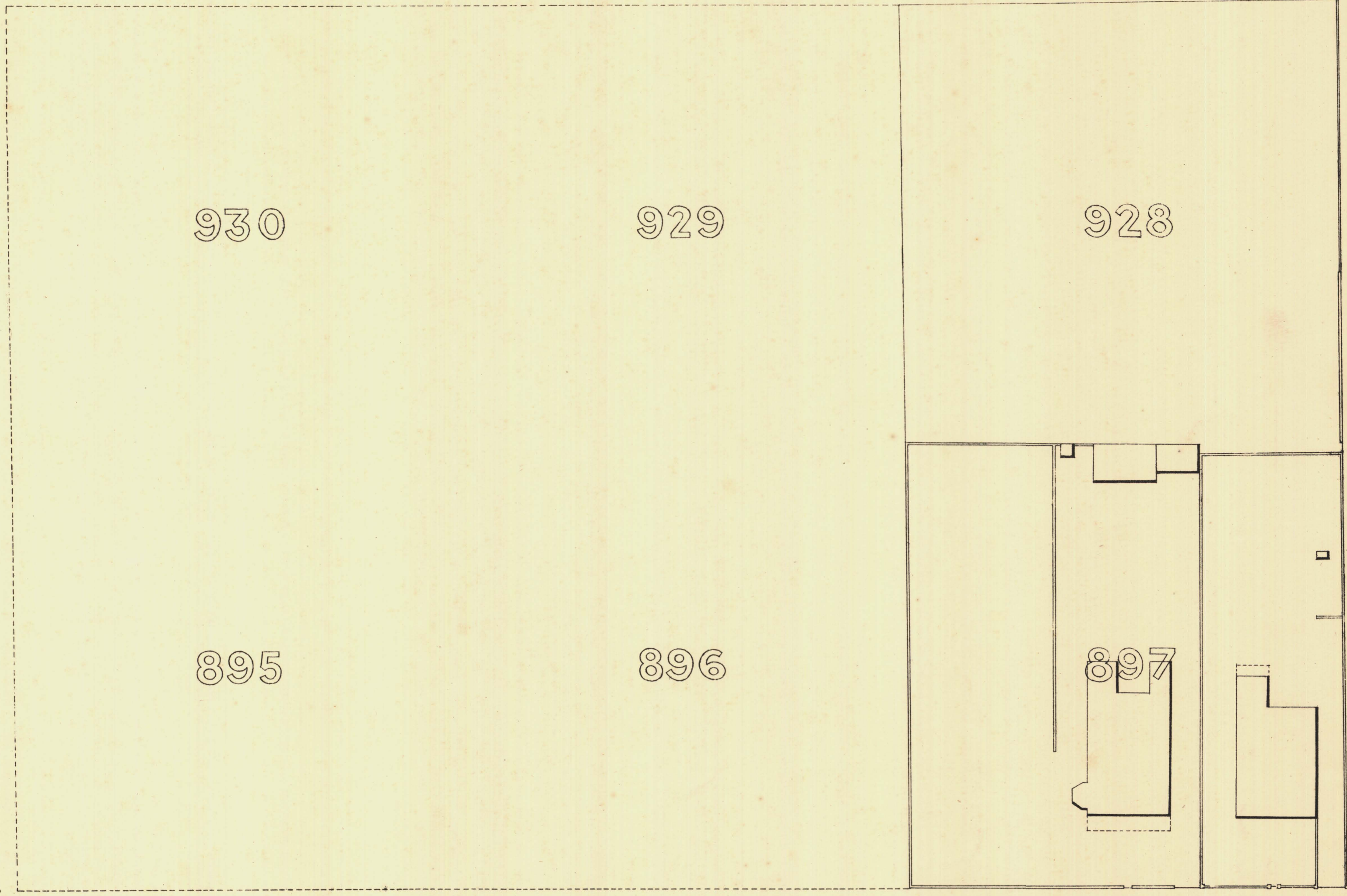
L A N D S

E R R A C E C H I L D E R S T

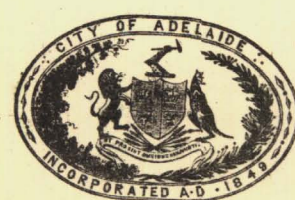
T  
K  
R  
A  
P  
S  
L  
L  
I  
M



T  
S  
L  
L  
I  
H



B U X T O N S T



*T. Smith* Mayor

*Thomas Hornum* Town Clerk

Scale Forty Feet to One Inch

SURVEYOR GENERAL'S OFFICE, ADELAIDE.

REFERENCE	
Town Acres shown thus	Fire Plugs shown thus
Stone Buildings	Step-cocks
Brick do	Stand-pipes
Wood and Iron do	Lamp-posts
Pillar Post-offices	Telegraph posts
Levels	Datum, 100 Feet below Low water at Port Adelaide.

*Charles W. Smith*  
City Engineer  
Licensed Surveyor R.P.A.