

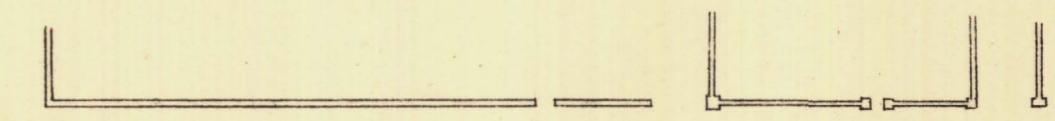
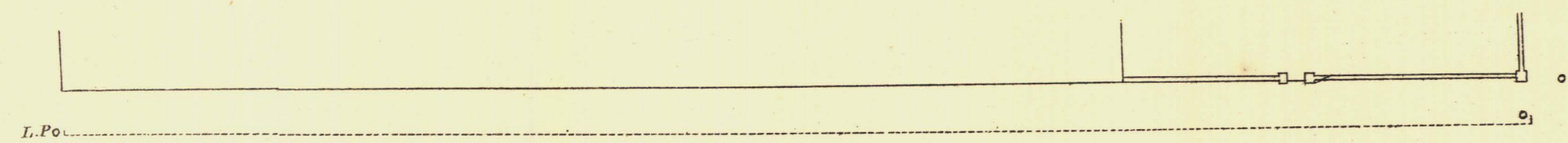
NORTH ADELAIDE

Sheet N^o 104.

ROBE WARD

KEY TO ADJOINING SHEETS

106	107
105	103
96	97 98



.241-00

.244-30

B U X

247-14

.247-41

T O N

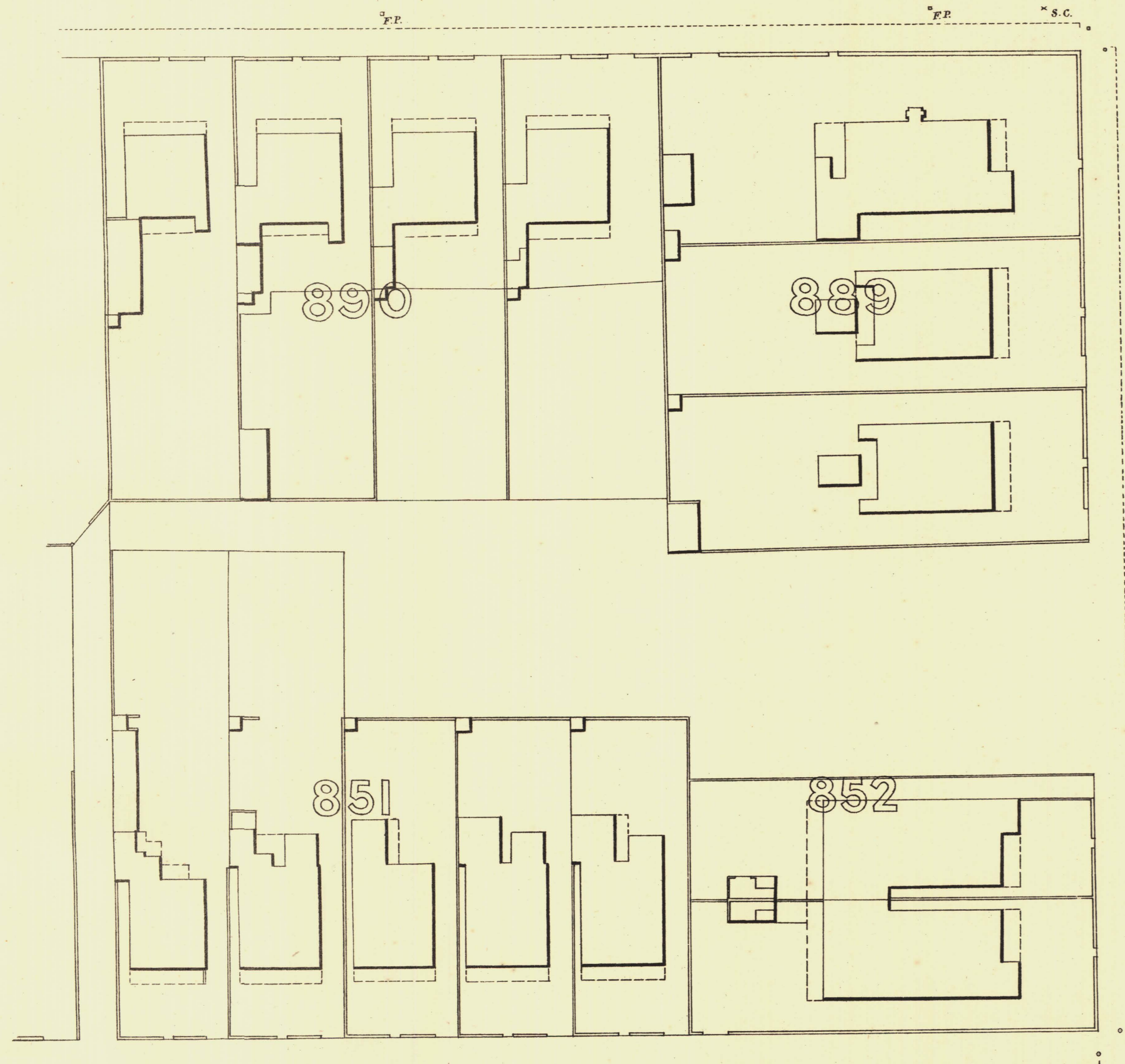
.249-16

S

.251-67

T

.253-94



S
T
R
E
E
T

.248-35

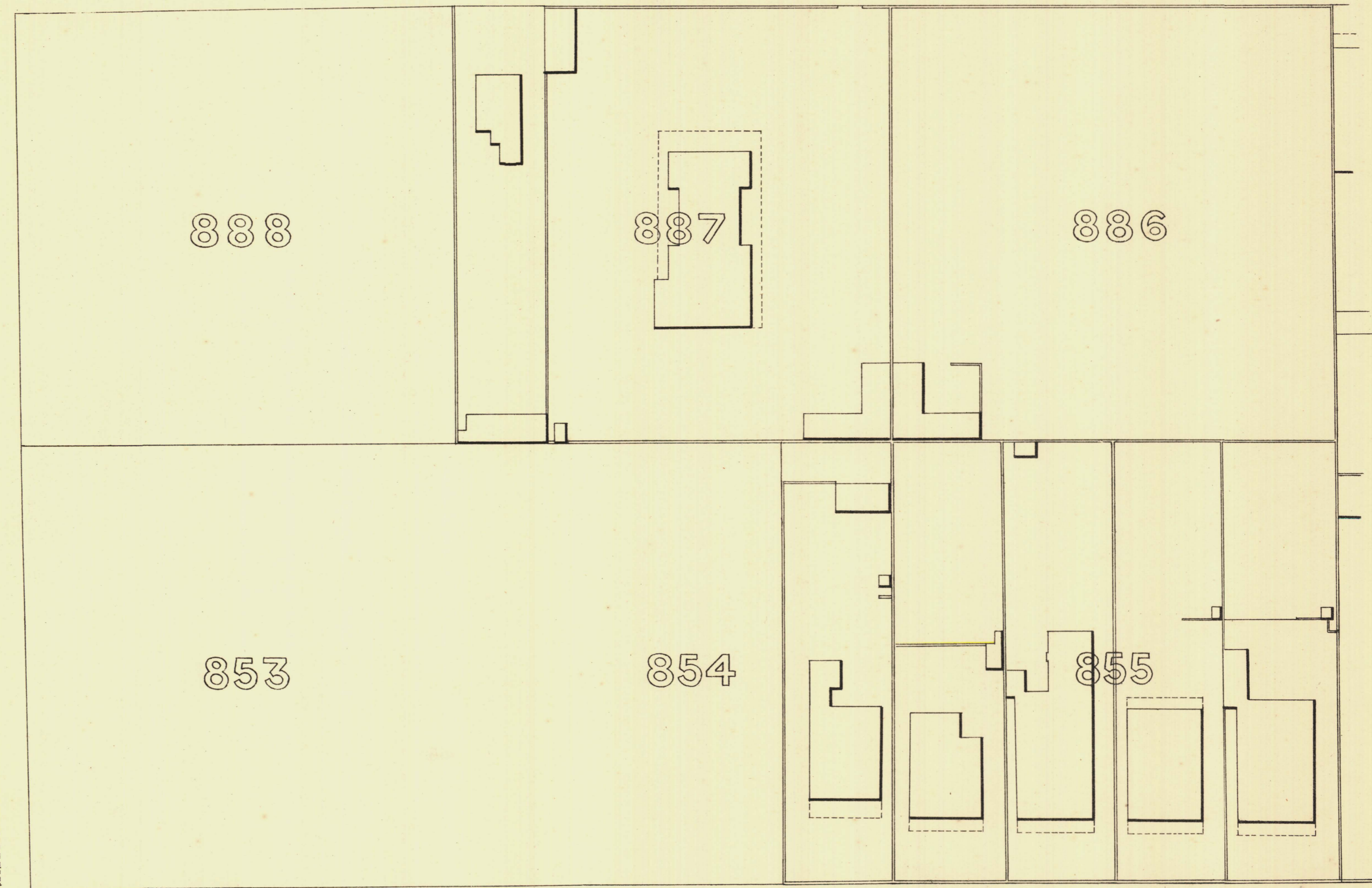
L

L

I

.249-59

H



.242-87

M

O

.246-52

L

E

S

.249-54

W

O

.251-87

T

H

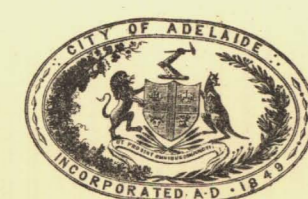
.253-55

S

T

.254-80

256-37



L. Smith Mayor

Thomas Hornum Town Clerk

100 Feet 50 0

Scale Forty Feet to One Inch

200 300 Feet.

SURVEYOR GENERAL'S OFFICE, ADELAIDE. Drawn & Engraved by Photolithography

REFERENCE

Town Acres shown thus	— [diagonal lines]	Fire Plugs shown thus	— [circle with cross]
Stone Buildings	— [solid rectangle]	Stop-cocks	— [circle with dot]
Brick do	— [dotted rectangle]	Stand-pipes	— [circle with cross]
Wood and Iron do	— [dashed rectangle]	Lamp-posts	— [circle with cross]
Pillar Post-offices	— [circle with cross]	Telegraph-posts	— [circle with cross]
Levels	— [dotted line]	Dations 100 Feet below Low water at Port Adelaide.	— [circle with cross]

Charles W. Smith
City Engineer
Licensed Surveyor R.F.A.