

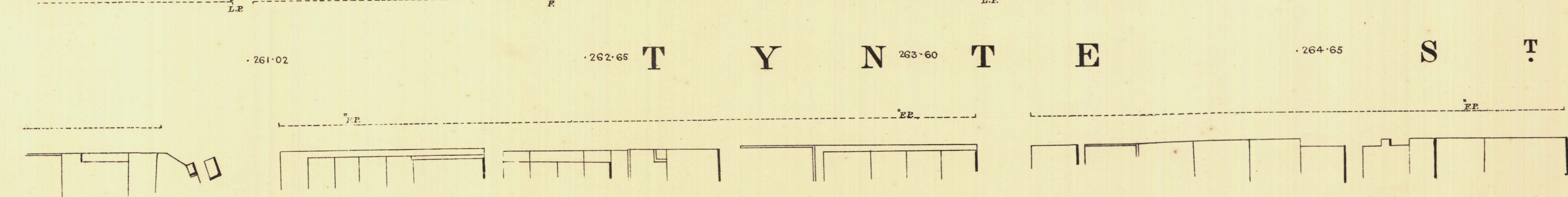
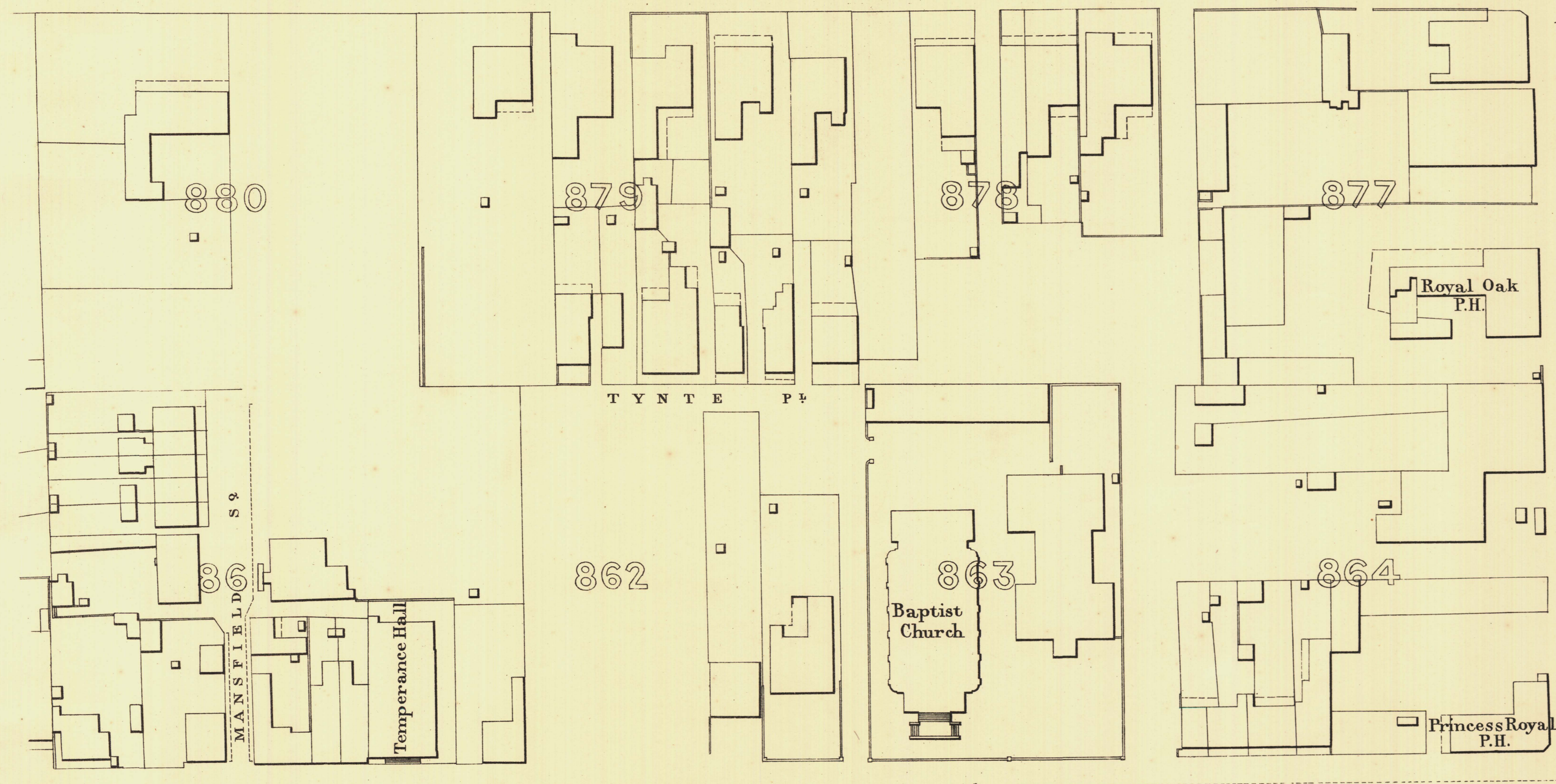
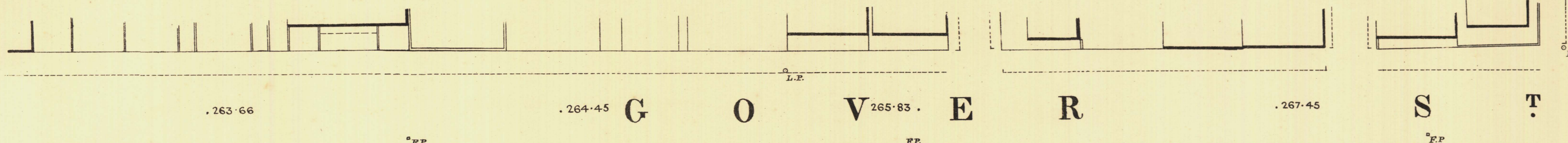
NORTH ADELAIDE

Sheet N°102

ROBE WARD

KEY TO ADJOINING SHEETS

107	108	109
103	101	
98	99	100

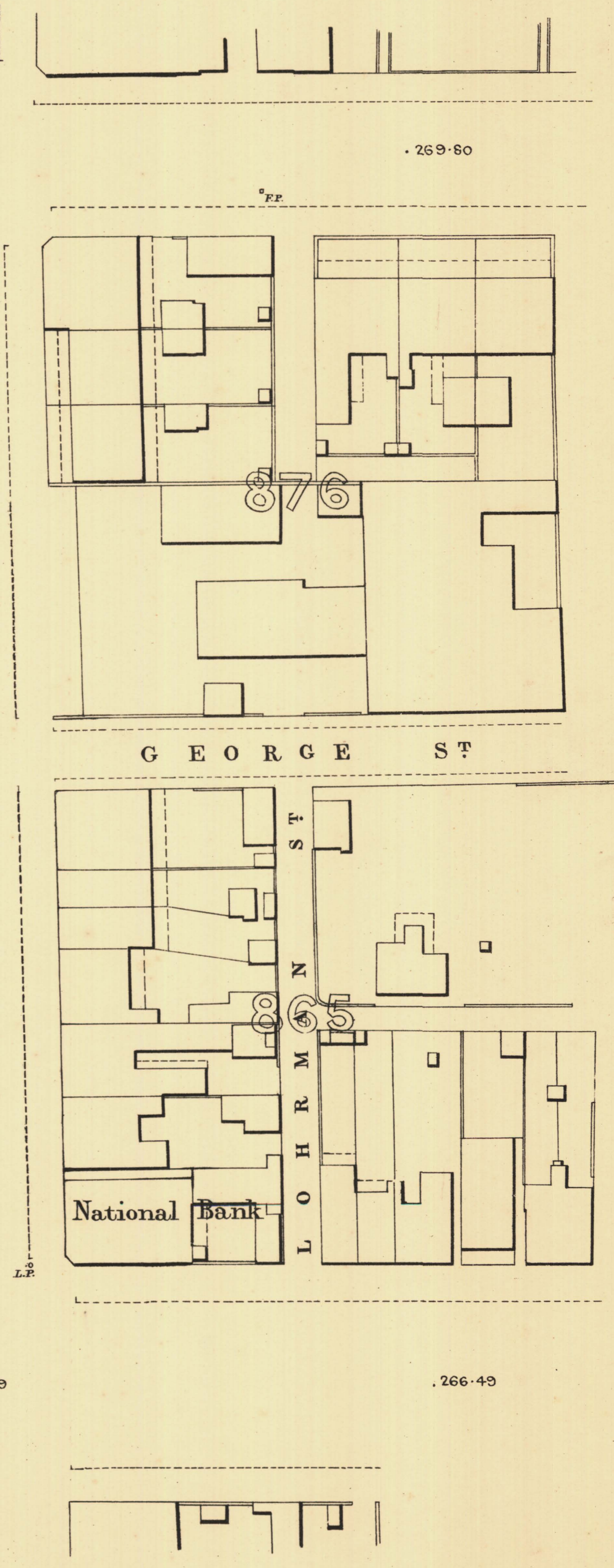


L. Smith Mayor
Thomas W. Smith Town Clerk

Scale Forty Feet to One Inch
 100 Feet 50 200 300 Feet.

SURVEYOR GENERAL'S OFFICE, ADELAIDE, DRAWN & QUOTED FROM PHOTO-LITHOGRAPH

Robe Ward
Macdonnell Ward



REFERENCE

Town Acres shown thus	—	Fire Plugs shown thus	—
Stone Buildings	—	Stop-cocks	—
Brick do	—	Stand-pipes	—
Wood and Iron do	—	Lamp-posts	—
Filler Post-offices	—	Telegraph posts	—
Levels	—	Datum 100 Feet below Low water at Port Adelaide	—

Charles W. Smith
 City Engineer
 Licensed Surveyor R.P.A.