

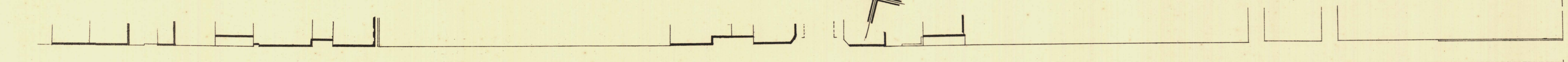
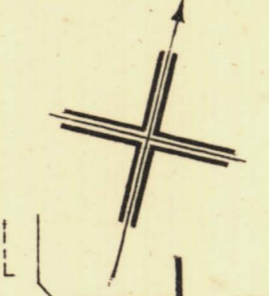
NORTH ADELAIDE

MAC DONNELL WARD

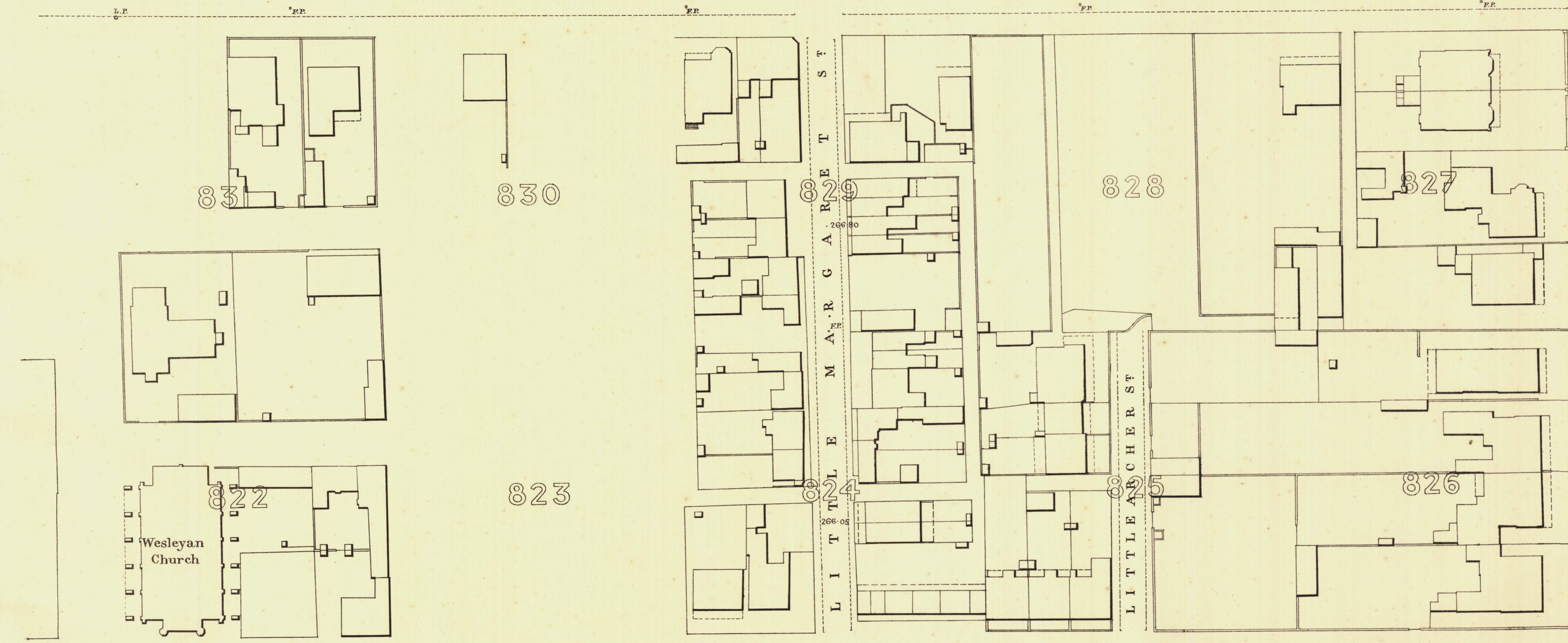
KEY TO ADJOINING SHEETS

Sheet N^o 100.

103	102	101
98	99	
93	92	91

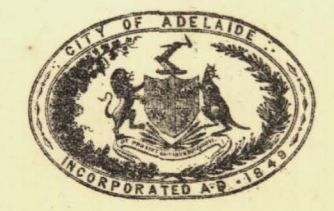
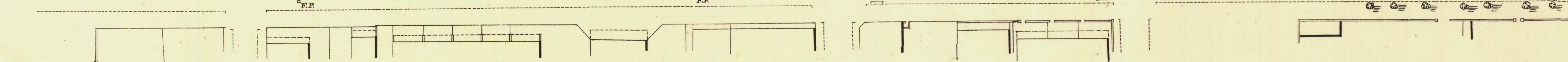


266-49 T Y N 267-52 T E .267-65 S T R 267-36 E E T 267-09



R
E
T
E
R
V
E
F
E
L
S
D
N
A
L
K
P
A
R
K
L

263-57 264-08 A R 265-53 C H E .265-50 R .265-45 S T .265-10 265-13



L. Smith Mayor

Thomas Hornum Town Clerk

Scale Forty Feet to One Inch
100 Feet 50 200 300 Feet

SURVEYOR GENERAL'S OFFICE, ADELAIDE. Printer: S. G. G. & Co. Photographers

REFERENCE

Town Acres shown thus	[Symbol]	Fire Plugs shown thus	[Symbol]
Stone Buildings	[Symbol]	Stop-cocks	[Symbol]
Brick do	[Symbol]	Stand-pipes	[Symbol]
Wood and Iron do	[Symbol]	Lamp-posts	[Symbol]
Filler Post-offices	[Symbol]	Telegraph posts	[Symbol]
Levels	[Symbol]	Datum 100 Feet below Low-water at Port Adelaide	[Symbol]

Walter Smith
City Engineer
Licensed Surveyor R.P.A.