

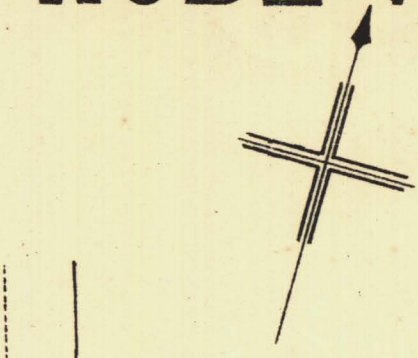
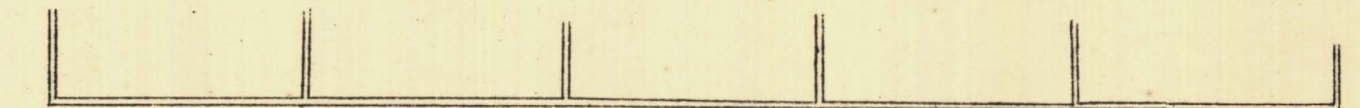
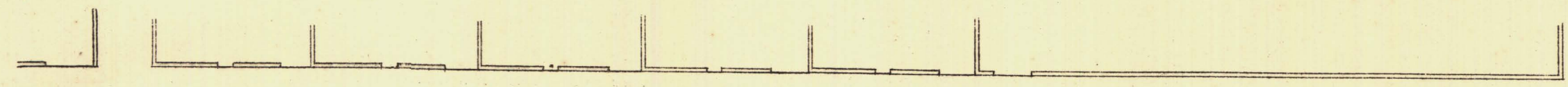
NORTH ADELAIDE

Sheet N^o 97.

ROBE WARD

KEY TO ADJOINING SHEETS

105	104	103
96	98	
95	94	93



.242-87

M .246-52

O

L

E .249-54

S

W

O

.251-87

R

T

H

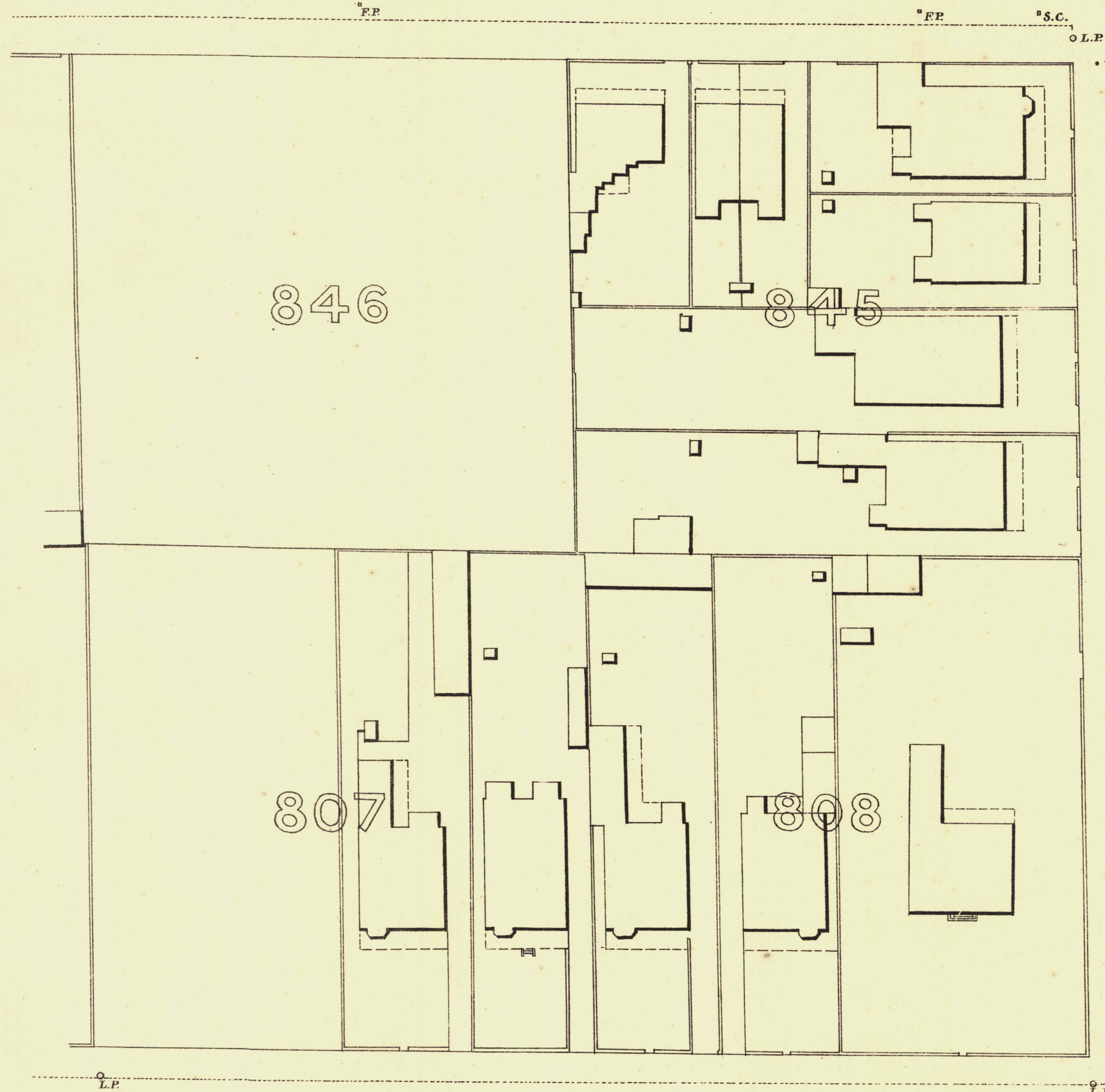
.253-55

S

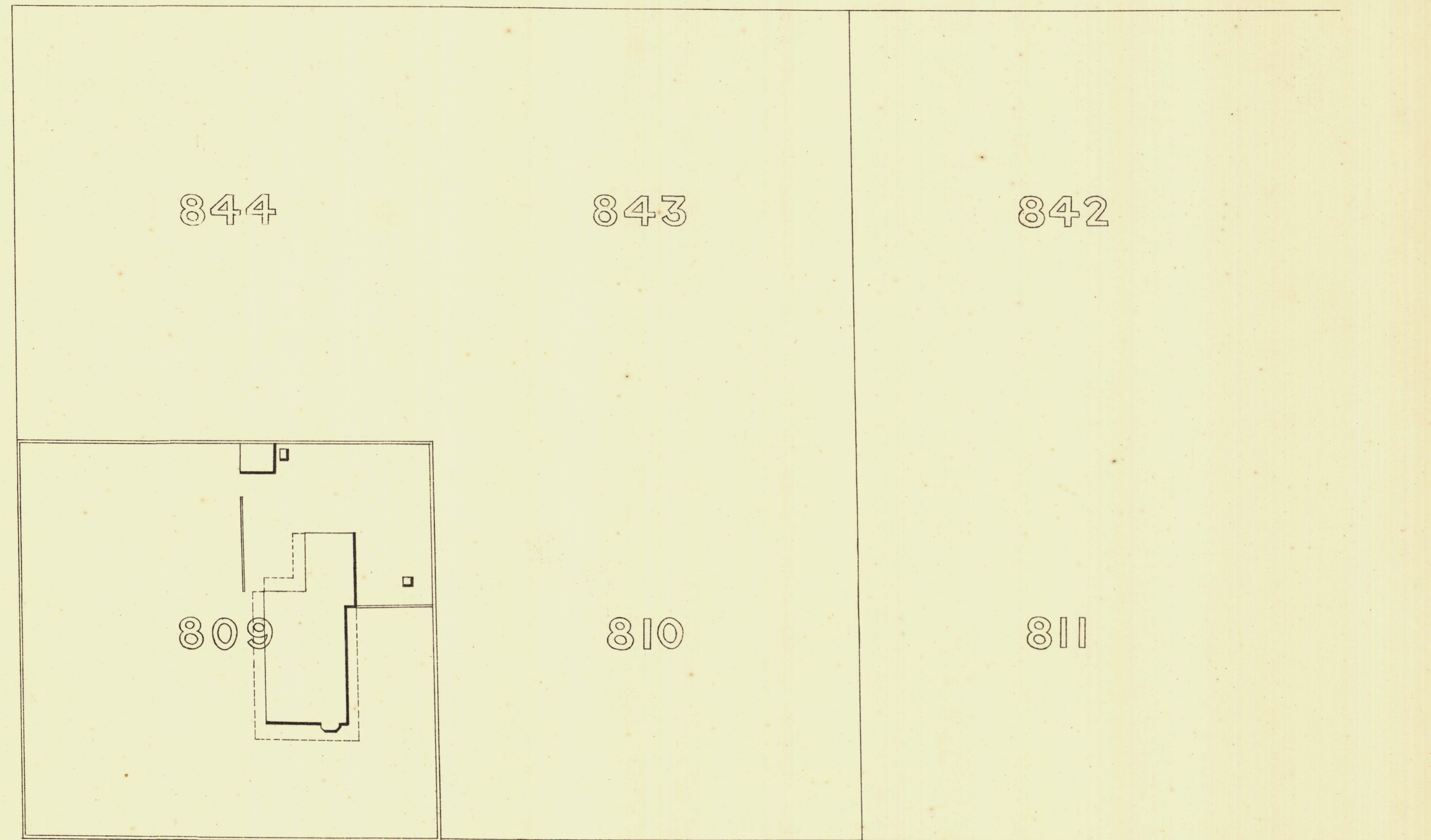
T

.254-80

.256-37



T
S
L
L
I
H



.233-75

.242-56

B

A

R .246-24

N

A

R

.248-67

D

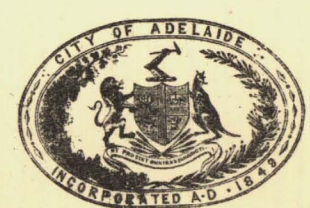
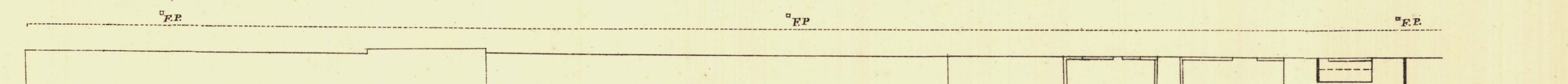
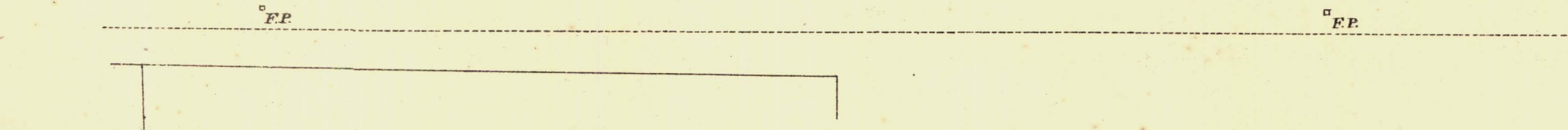
.249-91

S

T

.250-29

.251-06



L. Smith Mayor

Thomas Horwood Town Clerk

100 Feet 50 0 100 200 300 Feet.

Scale Forty Feet to One Inch

SURVEYOR GENERAL'S OFFICE, ADELAIDE, From S. Osborn's Photolithograph.

REFERENCE

Town Acres shown thus . . .	Fire Plug shown thus . . .	FP
Stone Buildings . . .	Stop-cocks . . .	S.C.
Brick do . . .	Stand-pipes . . .	S.P.
Wood and Iron do . . .	Lamp-posts . . .	L.P.
Fillar Post-offices . . .	Telegraph-posts . . .	G.P.
Levels . . .	Datum 100 Feet below Low-water at Port Adelaide.	

Charles W. Smith
City Engineer
Licensed Surveyor R.F.A.