

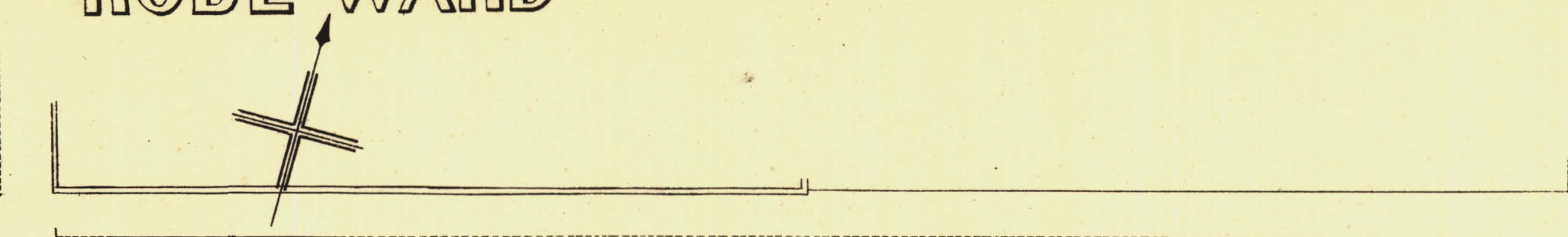
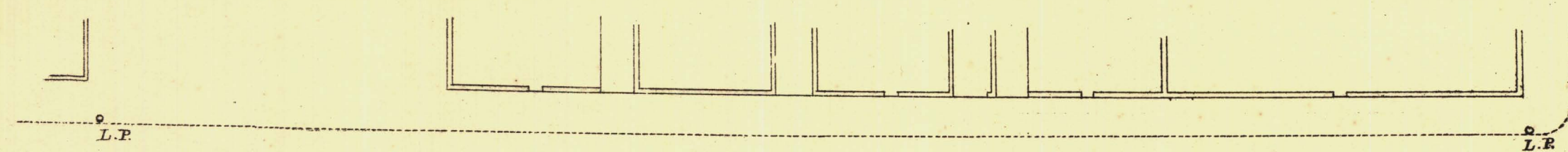
# NORTH ADELAIDE

Sheet N<sup>o</sup> 94.

# ROBE WARD

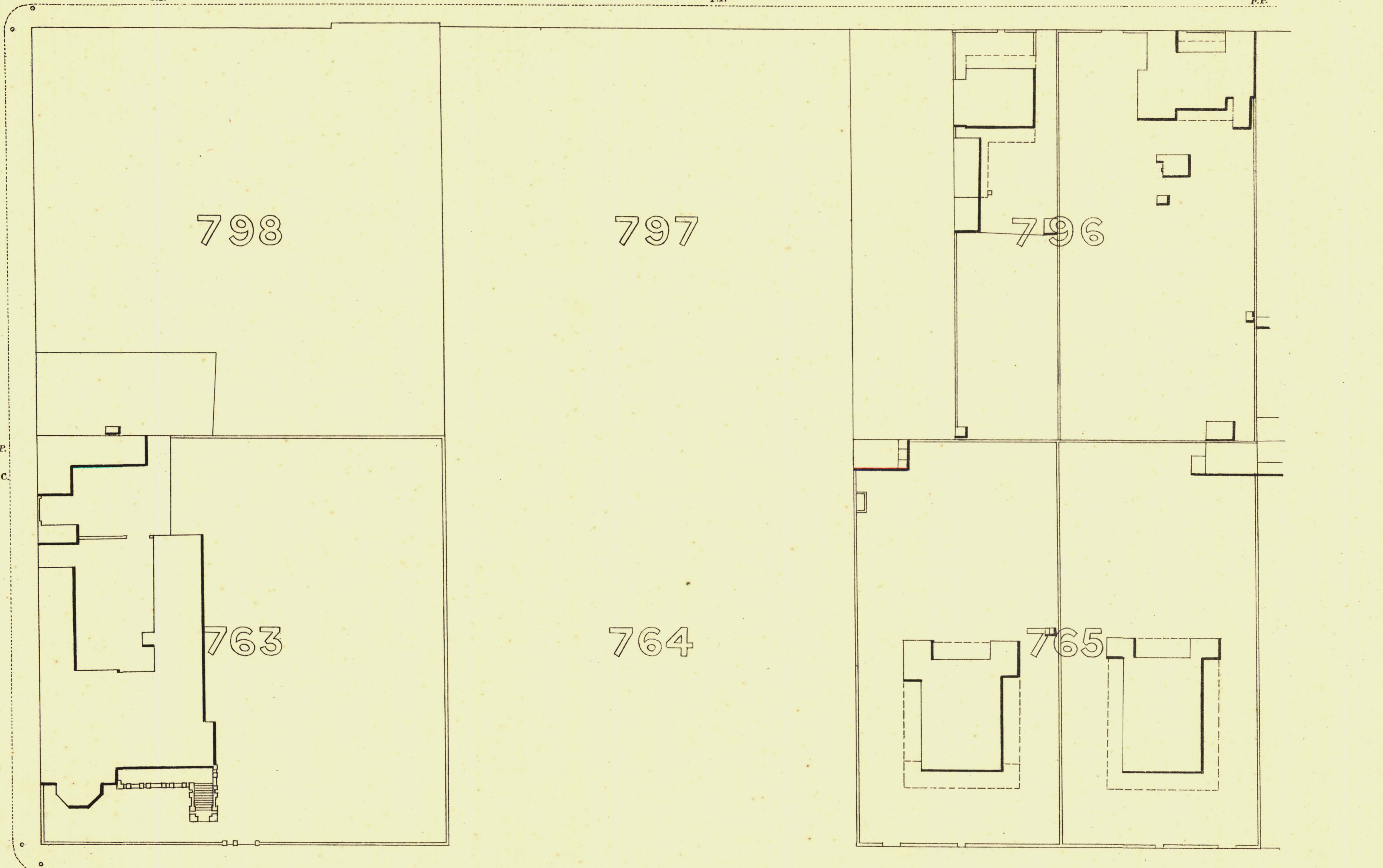
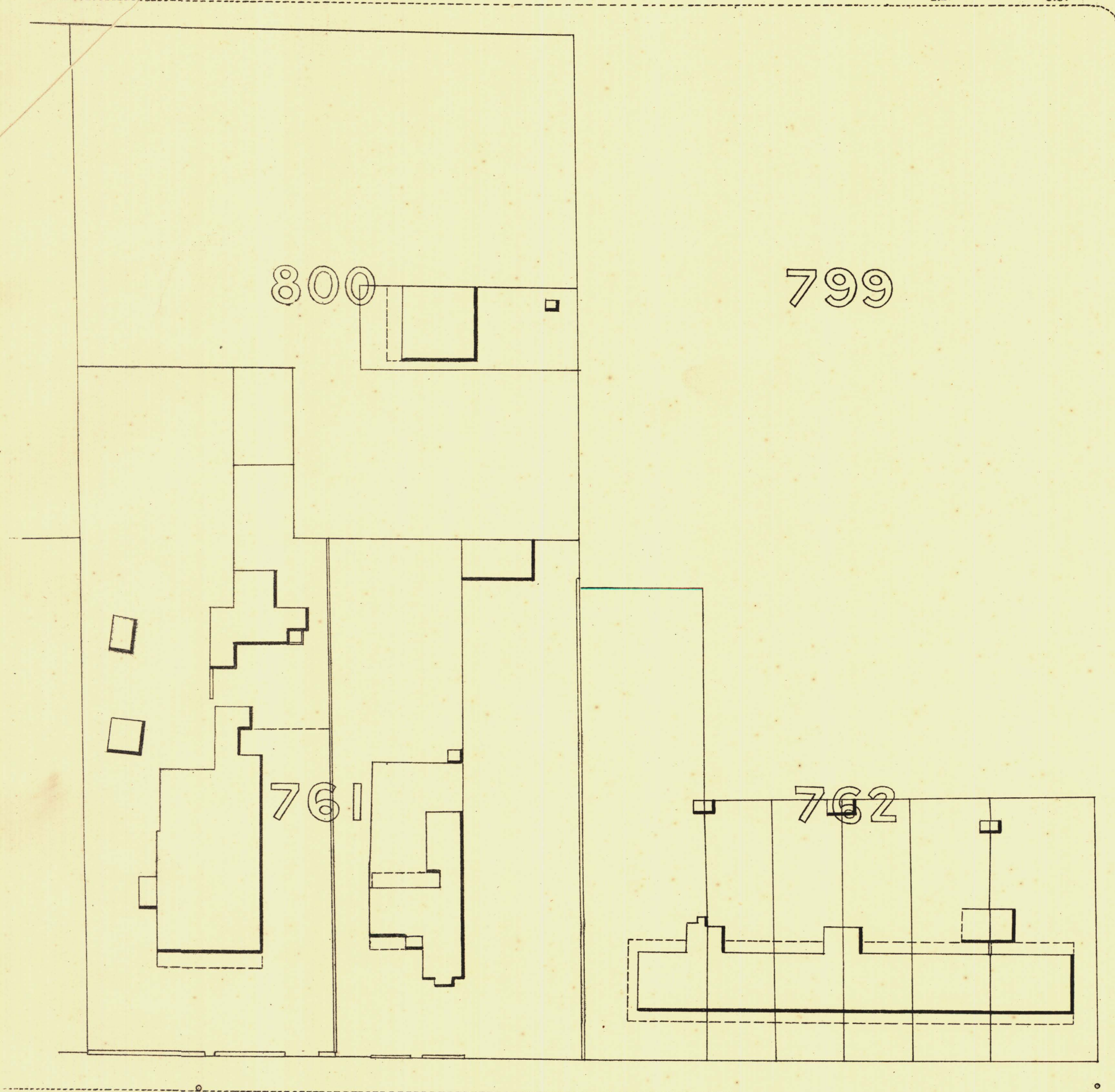
KEY TO ADJOINING SHEETS

96	97	98
95		93
87		88



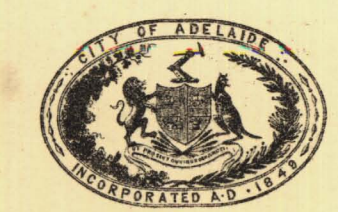
.233 5      .242-56      **B**      **A** 246-24      **R**      **N**      **A**      **R** 248-67      **D**      .249-91      **S**      **T**      .250-29

.243-03      .239-15      .243-03      .239-15      .243-03      .239-15      .243-03      .239-15



**S**      **T** .228-53      **R**      **A**      **N**      .233-60      **G**      **W**      **A**      .236-99      **Y**      **S**      **T**      .240-25      **E**      **R**      .243-98      **W**      **A**      **R**      **D**      **S**      **T**      .247-25

**P**      **A**      **R**      **K**      **L**      **A**      **N**      **D**      **S**



*L. Smith* Mayor

*Thomas ...* Town Clerk



Scale Forty Feet to One Inch

SURVEYOR GENERAL'S OFFICE, ADELAIDE. From S. Overland, Photolithographer.

REFERENCE

Town Acres shown thus	[Symbol]	Fire Plugs shown thus	[Symbol]
Stone Buildings	[Symbol]	Stop-cocks	[Symbol]
Brick do	[Symbol]	Stand-pipes	[Symbol]
Wood and Iron do	[Symbol]	Lamp-posts	[Symbol]
Filler Post-offices	[Symbol]	Telegraph-posts	[Symbol]
Levels	[Symbol]	Datum 100 Feet below Low-water at Port Adelaide.	

*Charles W. Smith*  
City Engineer  
Licensed Surveyor R.P.A.