

NORTH ADELAIDE

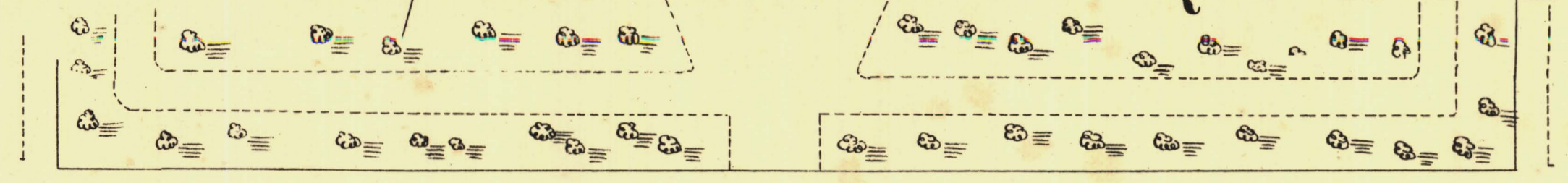
Sheet N^o 93.

ROBE WARD

KEY TO ADJOINING SHEETS

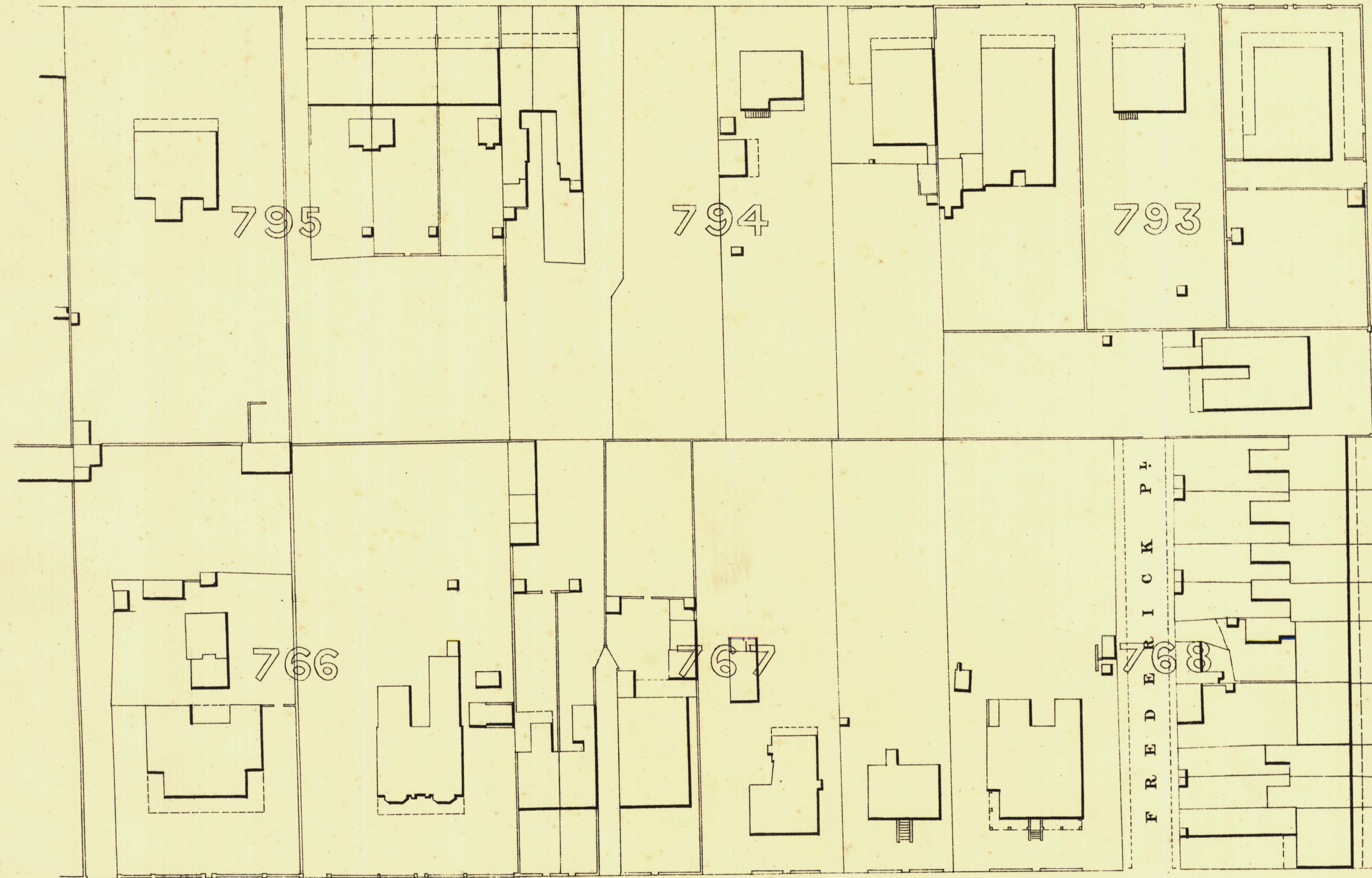
97	98	99
94	91	92
87	88	89

WELLINGTON SQUARE

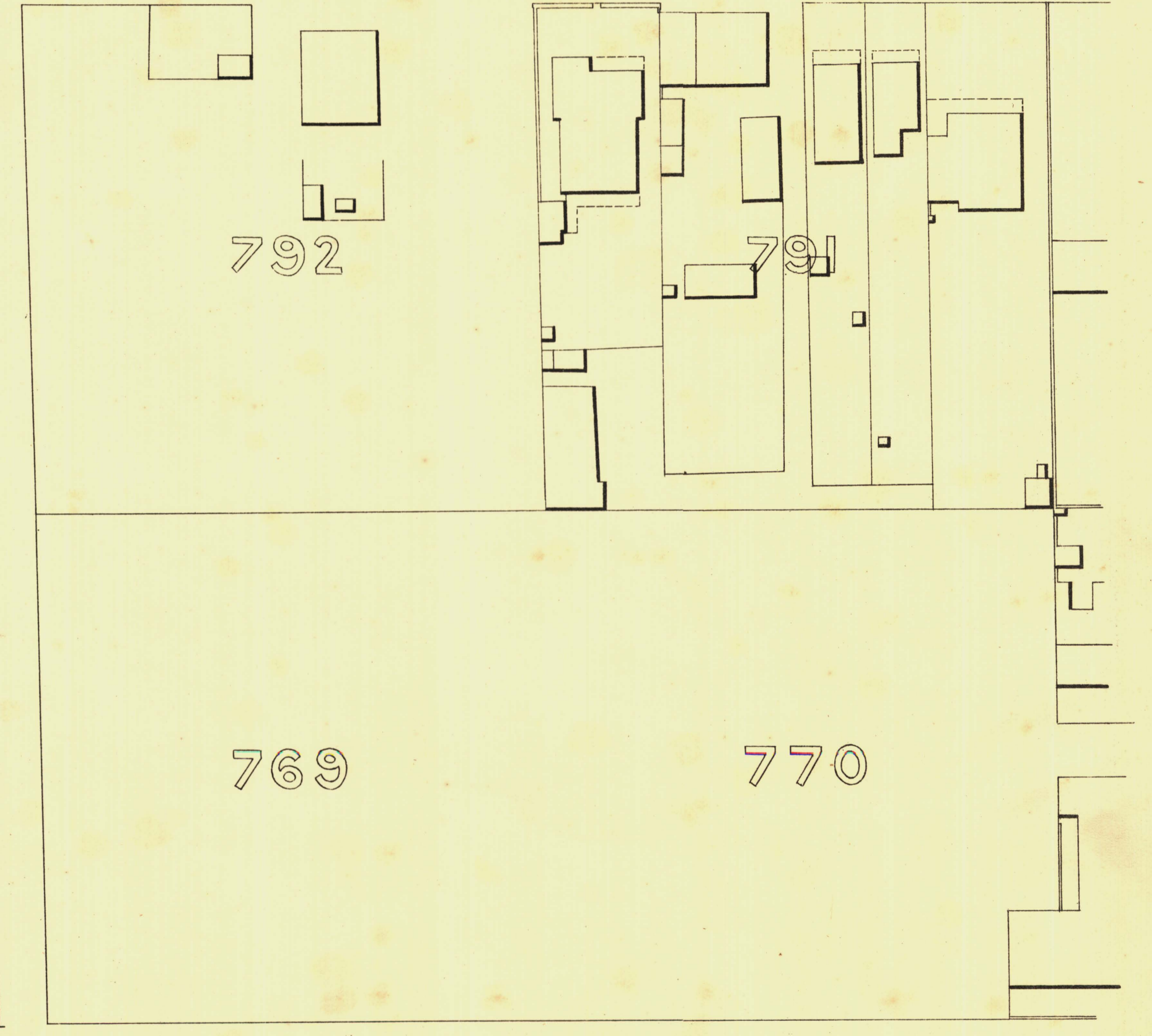


BARNARD ST

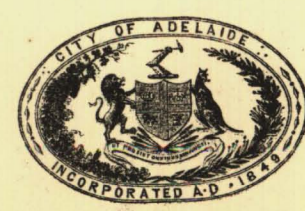
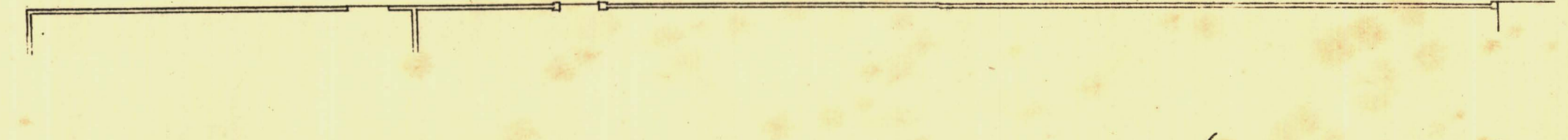
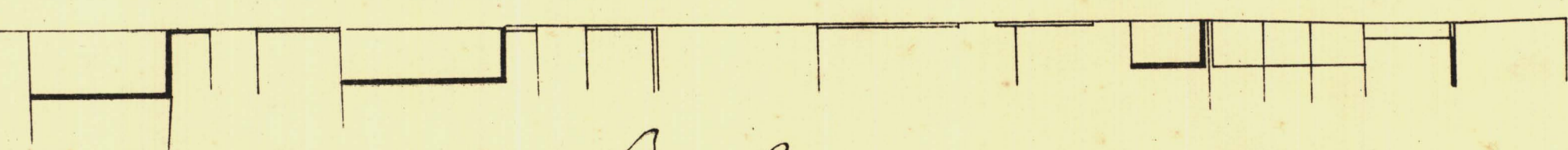
ARCHER ST



JEFFCOCK ST



WARD ST



L. Smith
Mayor

Thomas W. Smith
Town Clerk

Scale Forty Feet to One Inch

SURVEYOR GENERAL'S OFFICE, ADELAIDE. Fraser & Neave, Photo-lithographers.

REFERENCE

Town Acres shown thus	—	Fire Plugs shown thus	FP
Stone Buildings	—	Stop-cocks	S.C.
Brick do	—	Stand pipes	S.P.
Wood and Iron do	—	Lamp posts	L.P.
Filler Post-offices	—	Telegraph posts	T.P.
Levels	—	Datum, 100 Feet below Low-water at Port Adelaide.	

Charles W. Smith
City Engineer
Licensed Surveyor R.P.A.