

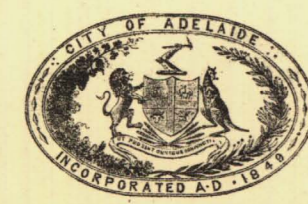
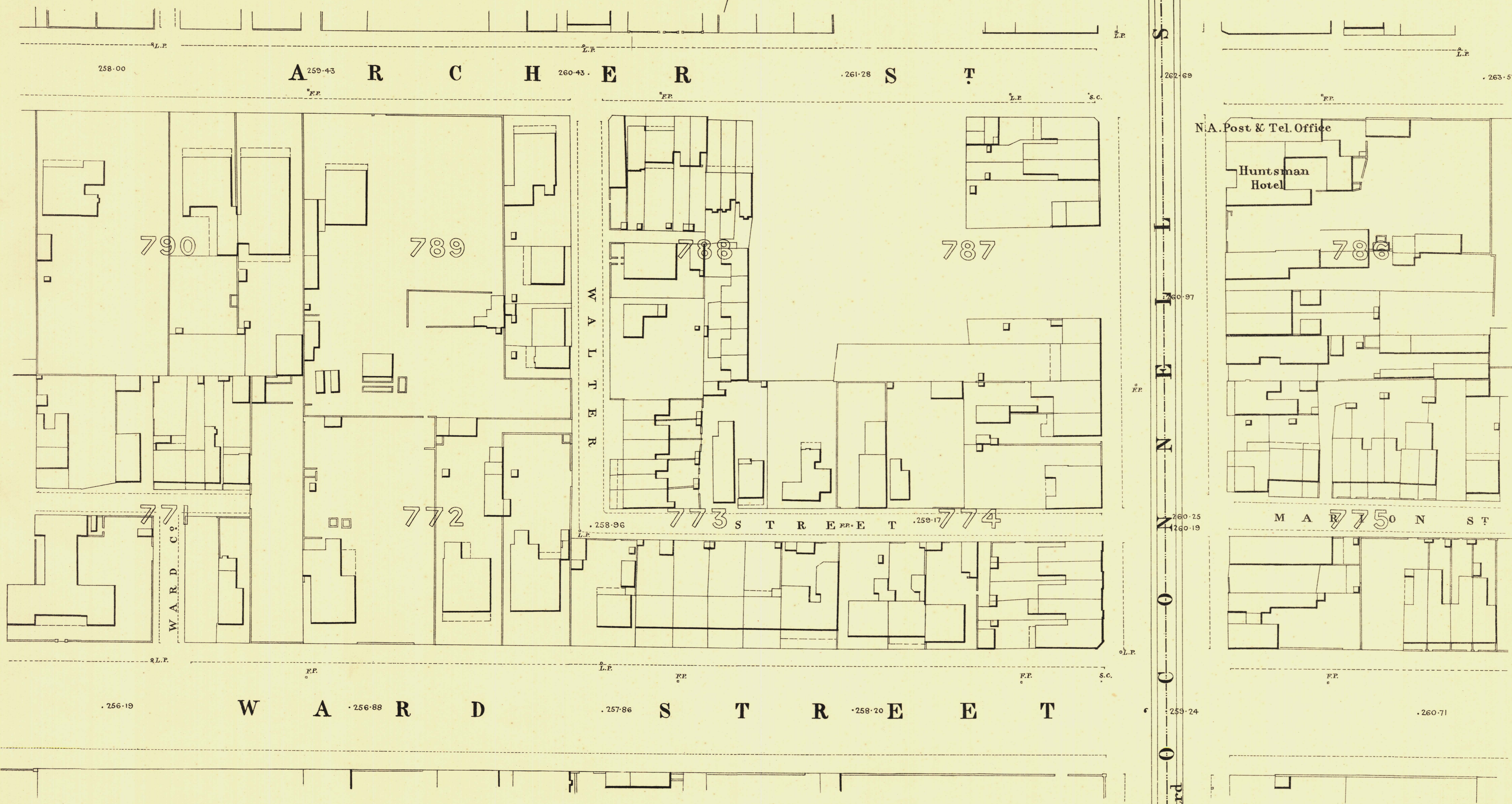
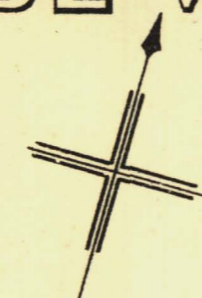
NORTH ADELAIDE

Sheet N^o 92.

ROBE WARD

KEY TO ADJOINING SHEETS

| | | |
|----|----|-----|
| 98 | 99 | 100 |
| 93 | | 91 |
| 88 | 89 | 90 |



L. Smith Mayor

Thomas W. ... Town Clerk

100 Feet 50 0 200 300 Feet

Scale Forty Feet to One Inch

SURVEYOR GENERAL'S OFFICE, ADELAIDE. Printer: S. Crawford, Photo-lithographer.

REFERENCE

| | | | |
|-----------------------|---|--|---|
| Town Acres shown thus | □ | Fire Plugs shown thus | □ |
| Stone Buildings | □ | Stop-cocks | □ |
| Brick do | □ | Stand pipes | □ |
| Wood and Iron do | □ | Lamp-posts | □ |
| Pillar Post-offices | □ | Telegraph-posts | □ |
| Levels | □ | Datum 100 Feet below Low water at Port Adelaide. | □ |

Robe Ward
Macdonnell Ward

Charles W. Smith
City Engineer
Licensed Surveyor R.P.A.