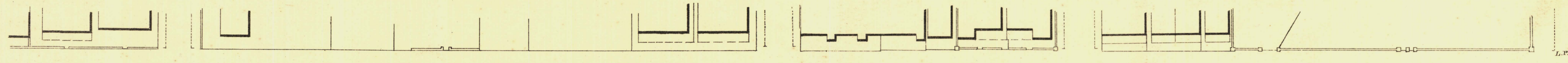
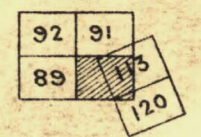


NORTH ADELAIDE

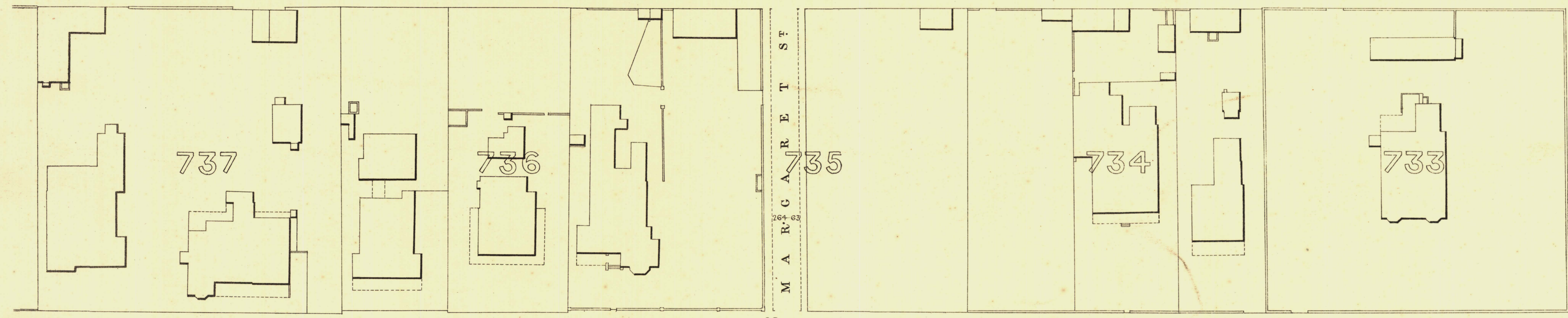
Sheet N^o 90.

MAC DONNELL WARD

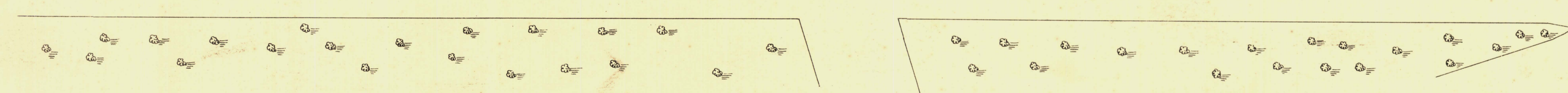
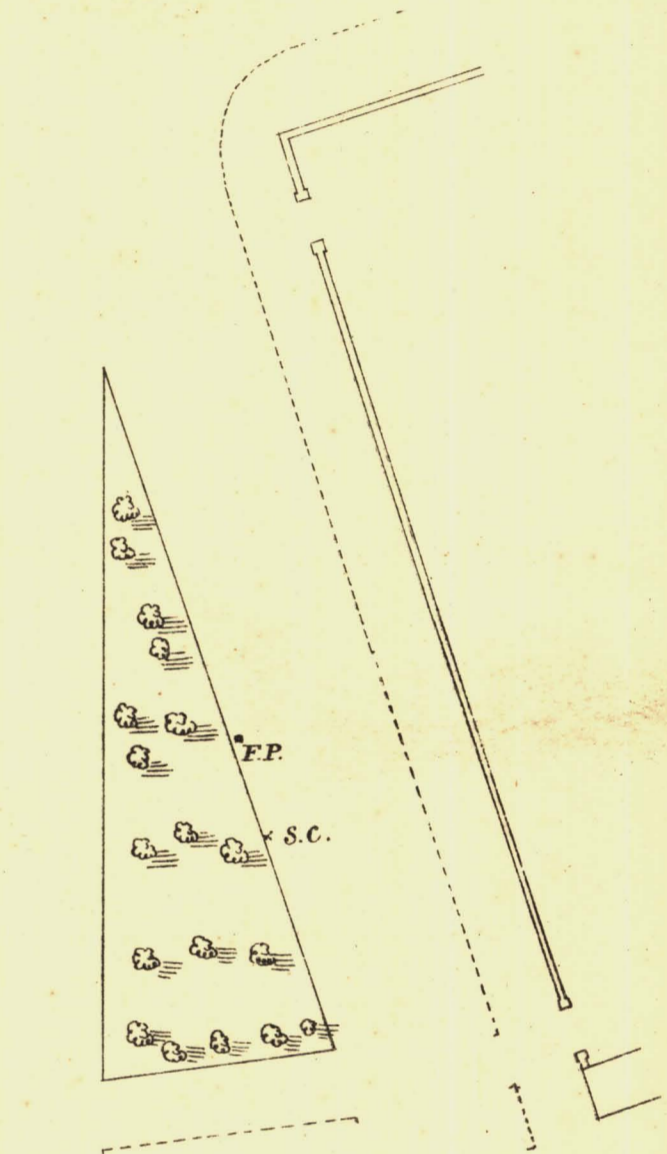
KEY TO ADJOINING SHEETS



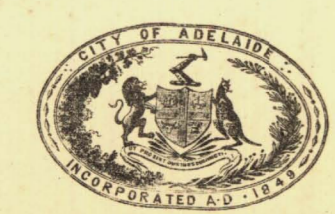
260-71 262-32 W 263-32 A R D 264-00 S T R 263-28 E E T 262-31 262-04



258-07 259-76 B R O 260-32 U G H 261-09 A M P 258-89 L A C 255-52 E 252-82



S T A N L E Y S T



L. Smith Mayor

Thomas Horn Town Clerk

100 Feet 50 200 300 Feet.
Scale Forty Feet to One Inch

SURVEYOR GENERAL'S OFFICE, ADELAIDE. Printer: S. Oswald, Photo-lithography.

REFERENCE
Town Acres shown thus - [diagram] Fire Plugs shown thus - [diagram]
Stone Buildings - [diagram] Stop-cocks - [diagram]
Brick do - [diagram] Stand pipes - [diagram]
Wood and Iron do - [diagram] Lamp-posts - [diagram]
Pillar Post-offices - [diagram] Telegraph-posts - [diagram]
Levels - [diagram] Datum, 100 Feet below Low water at Port Adelaide.

Charles W. Smith
City Engineer
Licensed Surveyor R.P.A.