

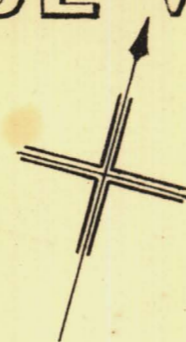
NORTH ADELAIDE

Sheet N^o 87.

ROBE WARD

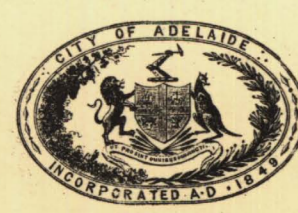
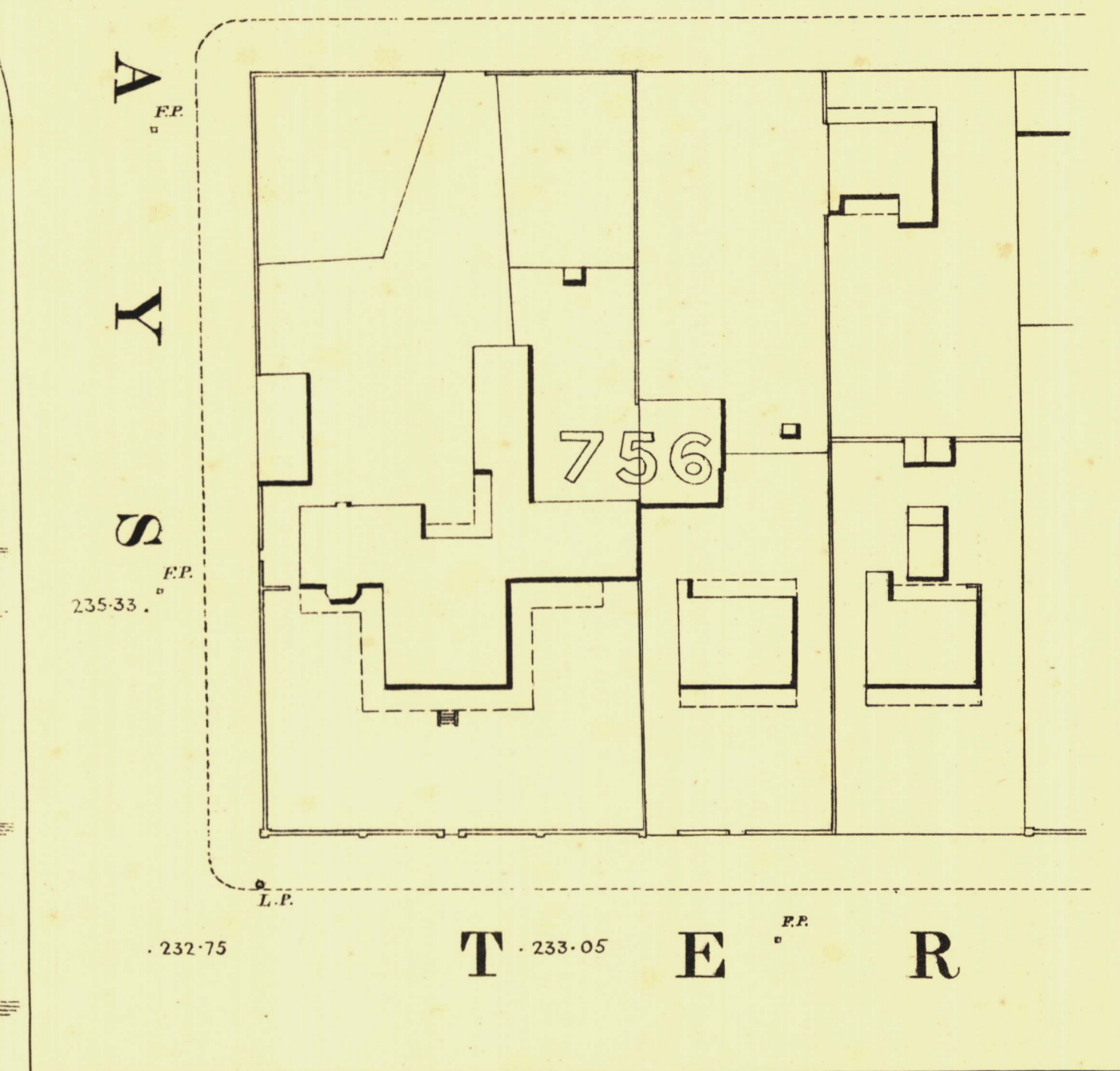
KEY TO ADJOINING SHEETS

95	94	93
	88	
	82	



S T R A N G^W W⁴⁻⁸⁸ A R D S T²⁴⁷⁻²⁵

P A R K L A N D S



L. J. Smith
Mayor

Thomas ...
Town Clerk

100 Feet 50 0 200 300 Feet

Scale Forty Feet to One Inch

SURVEYOR GENERAL'S OFFICE, ADELAIDE. From S. Greenfield's Photographs.

REFERENCE

Town Acres shown thus - [diagonal lines]	Fire Plugs shown thus - [circle with cross]
Stone Buildings - [solid rectangle]	Stop-cocks - [circle with dot]
Brick do - [dotted rectangle]	Stand pipes - [circle with vertical line]
Wood and Iron do - [hatched rectangle]	Lamp-posts - [circle with horizontal line]
Pillar Post-offices - [circle with 'P.O.']	Telegraph-posts - [circle with 'T.P.']
Levels - [dashed line]	Datum 100 Feet below Low water at Port Adelaide.

Charles W. Smith
City Engineer
Licensed Surveyor R.F.A.