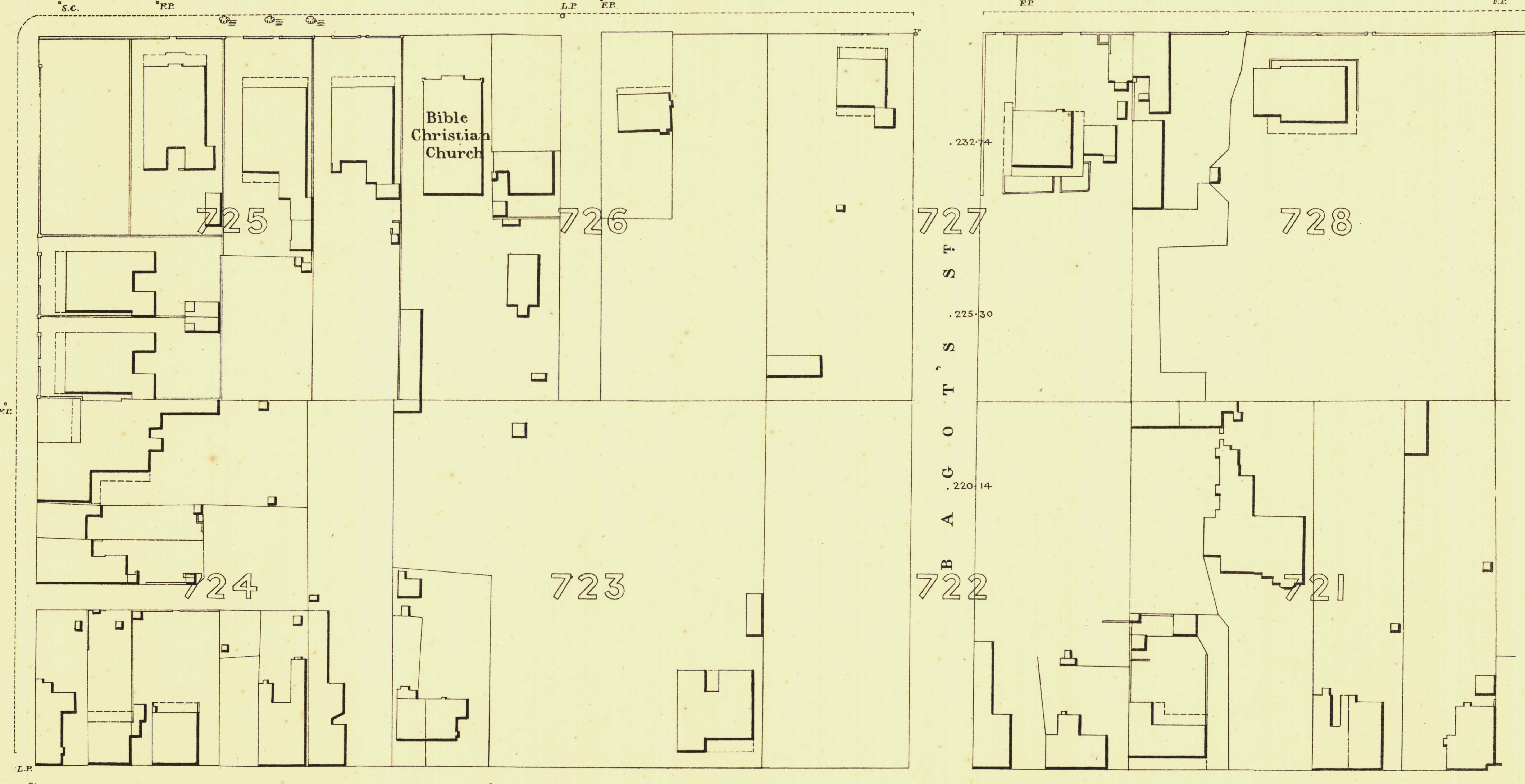
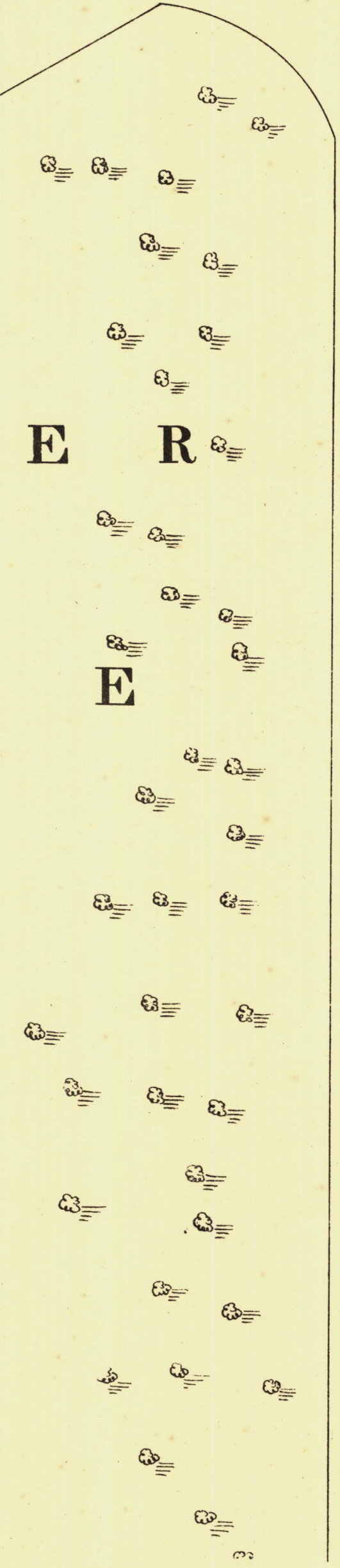


252-90 B .248-43 R O 244-77 U G H A .240-33 M P 234-76 L

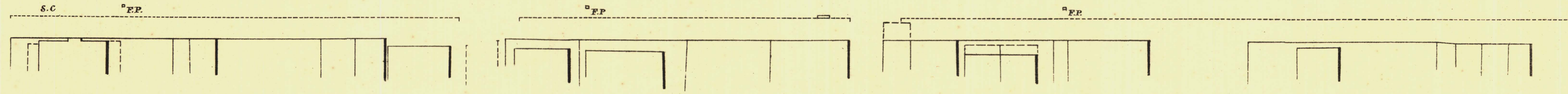


P A L M E R

P L A C E



.238-55 .231-13 K .224-72 E 220-51 R M .216-53 O D E .212-88 S .210-87 T



L. Smith Mayor

Thomas W. Smith Town Clerk

100 Feet 50 0 200 300 Feet

Scale Forty Feet to One Inch

SURVEYOR GENERAL'S OFFICE, ADELAIDE. Printer: S. Greenfield, Photo-Lithographer.

REFERENCE

Town Acres shown thus - 141	Fire Plugs shown thus - 141	o.F.P.
Stone Buildings - [Symbol]	Stop-cocks - [Symbol]	s.C.
Brick do - [Symbol]	Stand-pipes - [Symbol]	o.S.P.
Wood and Iron do - [Symbol]	Lamp-posts - [Symbol]	o.L.P.
Pillar Post-offices - [Symbol]	Telegraph-posts - [Symbol]	o.T.P.
Levels - [Symbol]	Datum 100 Feet below Low-water at Port Adelaide.	

Charles W. Smith
City Engineer
Licensed Surveyor R.P.A.