

# SOUTH ADELAIDE

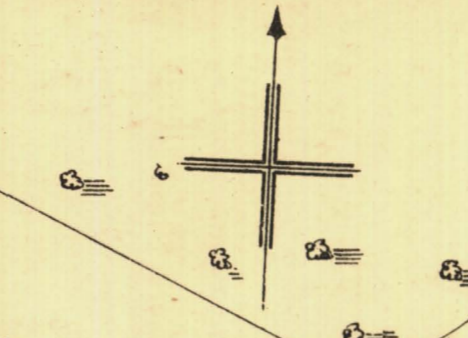
Sheet N°81.

# CAWLER WARD

KEY TO ADJOINING SHEETS

80	79
68	69
67	66

From Port Adelaide

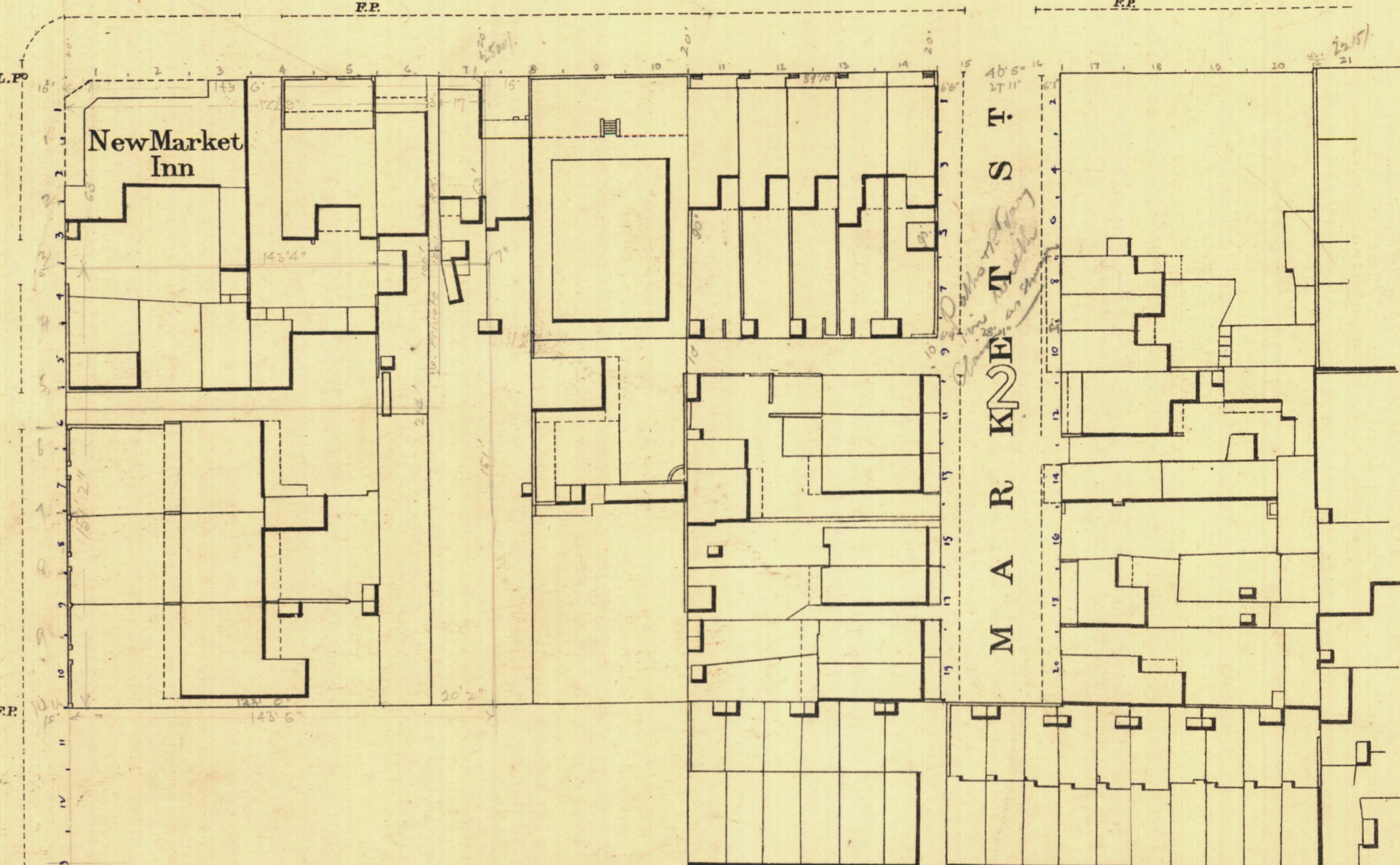


# N O R T H T E R .

# P A R K L A N D S

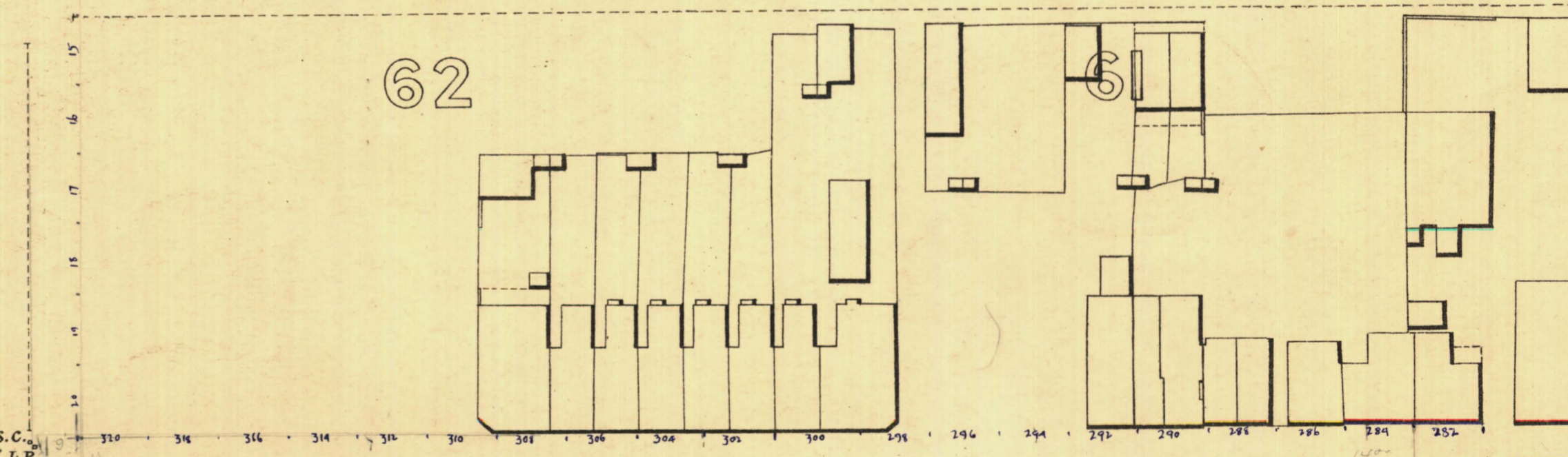
R.  
E  
T  
S  
E  
W

T  
K  
E  
T



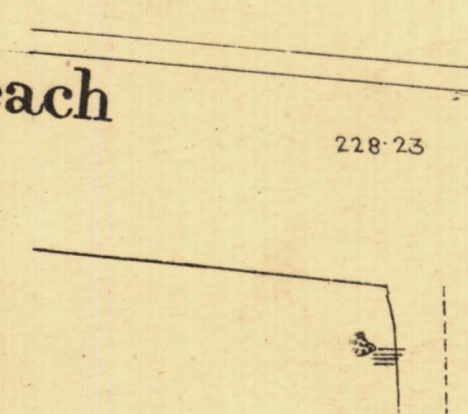
# R O S E S T

62



# H I N D L E Y S T

From Henley Beach



*L. Smith* Mayor

*Thomas W. Smith* Town Clerk

100 Feet. 50 0 100 200 300 Feet

Scale Forty Feet to One Inch

SURVEYOR GENERAL'S OFFICE, ADELAIDE. From S. G. and L.P. Photolithograph.

- REFERENCE
- Town Acres shown thus - [Symbol]
  - Stone Buildings - [Symbol]
  - Brick do - [Symbol]
  - Wood and Iron do - [Symbol]
  - Pillar Post-offices - [Symbol]
  - Levels - [Symbol]
  - Fire Plugs shown thus - [Symbol]
  - Stop-cocks - [Symbol]
  - Stand-pipes - [Symbol]
  - Lamp-posts - [Symbol]
  - Telegraph-posts - [Symbol]
  - Datum 100 Feet below Low-water at Port Adelaide.

*Walter W. Smith*

City Engineer  
Licensed Surveyor R.P.A.