

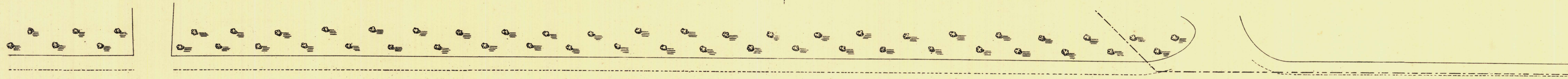
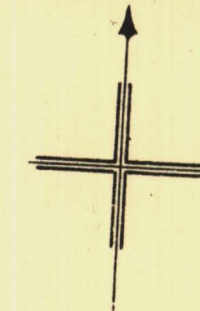
SOUTH ADELAIDE

Sheet N^o 80.

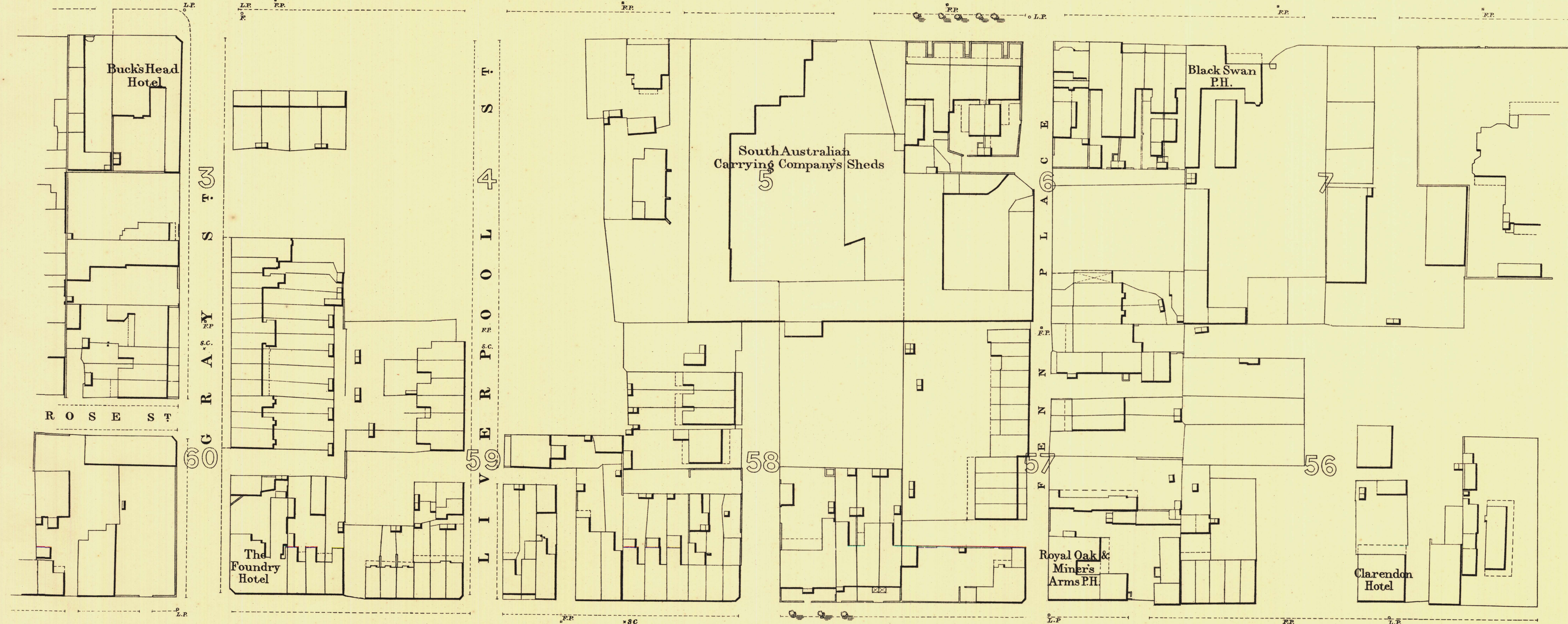
CAWLER WARD

KEY TO ADJOINING SHEETS

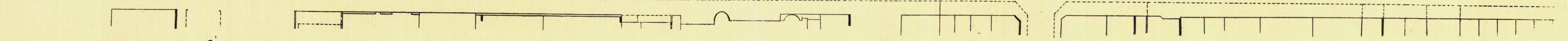
| | |
|----|----|
| 81 | 79 |
| 68 | 70 |
| 67 | 65 |



229-41 **N O R T H** 226-13 **T E R R A C E** 217-87 212-37



230-55 **H I N D L E Y** 240-43 **S T R E E T** 237-88 230-43



L. Smith Mayor
Thomas ... Town Clerk

Scale Forty Feet to One Inch
 100 Feet 50 200 300 Feet.

SURVEYOR GENERAL'S OFFICE, ADELAIDE. DRAWN BY S. G. ... PHOTO-LITHOGRAPHED BY ...

REFERENCE

| | | | |
|-------------------------|--------|--|--------|
| Town Areas shown thus - | □ | Fire Plugs shown thus - | ⊕ |
| Stone Buildings - | ▨ | Stop-cocks - | * S.C. |
| Brick do - | ▩ | Stand-pipes - | ⊙ S.P. |
| Wood and Iron do - | ▧ | Lamp-posts - | ⊙ L.P. |
| Pillar Post offices - | ⊙ P.O. | Telegraph posts - | ⊙ T.P. |
| Levels - | — | Datum 100 Feet below Low-water at Port Adelaide. | |

Charles W. Smith
 City Engineer
 Licensed Surveyor R.F.A.