

SOUTH ADELAIDE

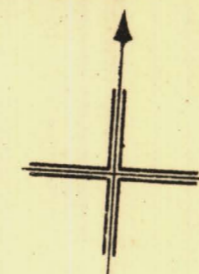
Sheet N^o 78.

CAWLER WARD

KEY TO ADJOINING SHEETS

79	77
70	72
65	63

Railway Station



212-26

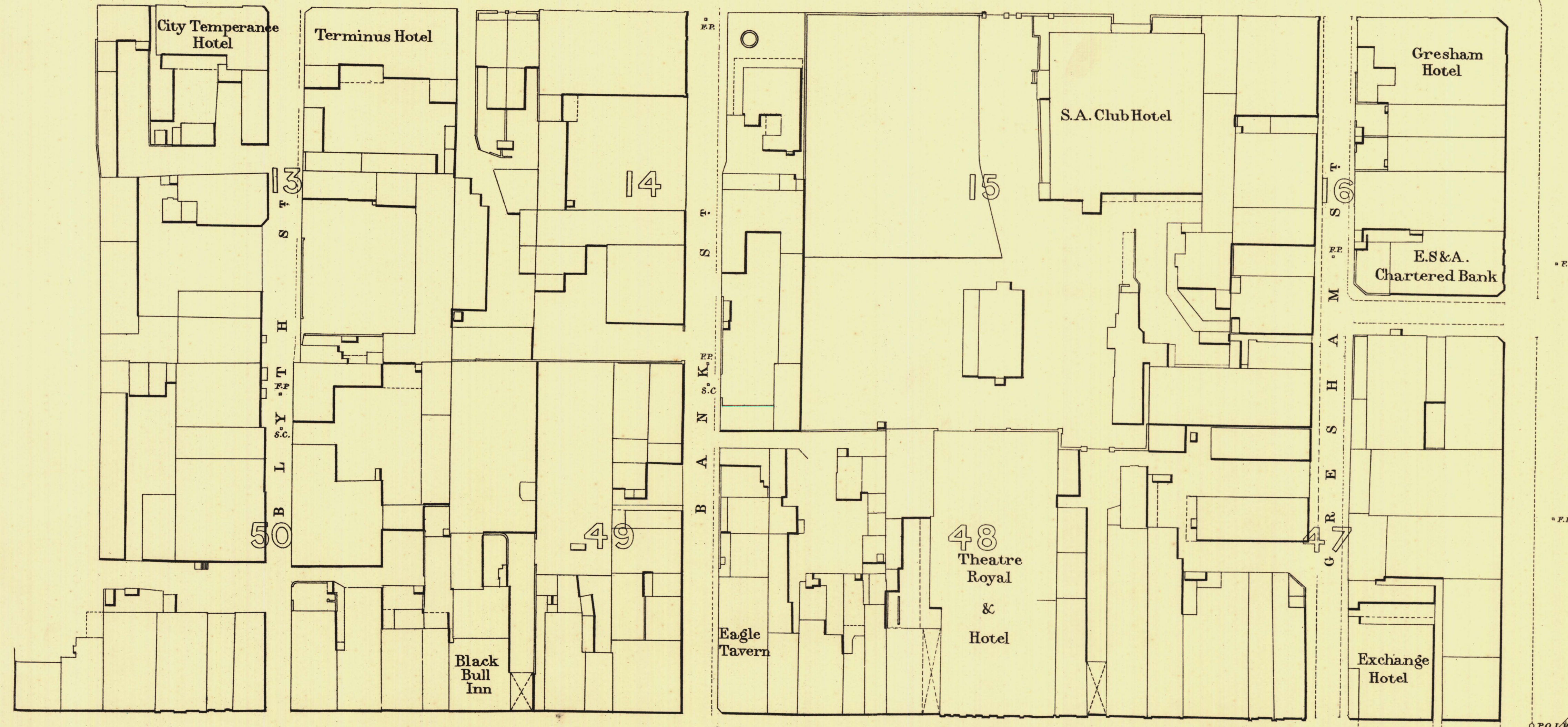
218-87

N O R T H T E R R A C E

224-68

232-38

242-15



H I N D L E Y S T

K I N G W I L L I A M S T



L. Smith Mayor

Thomas W. Smith Town Clerk

Scale Forty Feet to One Inch

SURVEYOR GENERAL'S OFFICE, ADELAIDE.

REFERENCE

Town Acres shown thus - 1/4	Fire Plugs shown thus -	o.F.P.
Stone Buildings -	Stop-cocks -	* S.C.
Brick do -	Stand-pipes -	o.S.P.
Wood and Iron do -	Lamp-posts -	o.L.P.
Pillar Post-offices -	Telegraph posts -	o.T.P.
Levels - 229-31	Datum 100 Feet below Low water at Port Adelaide.	

Charles W. Smith
City Engineer
Licensed Surveyor R.P.A.