

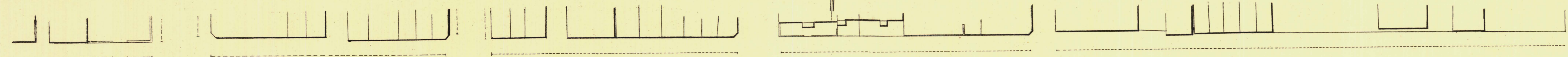
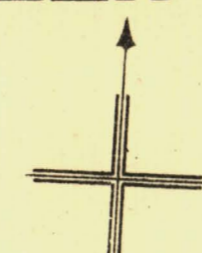
SOUTH ADELAIDE

Sheet N° 69.

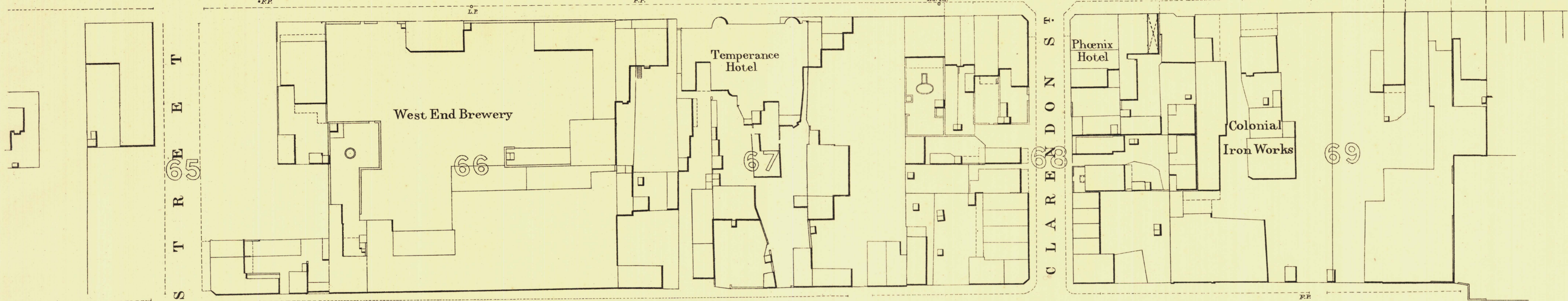
CAWLER WARD

KEY TO ADJOINING SHEETS

81	80	79
68	67	70
67	66	65



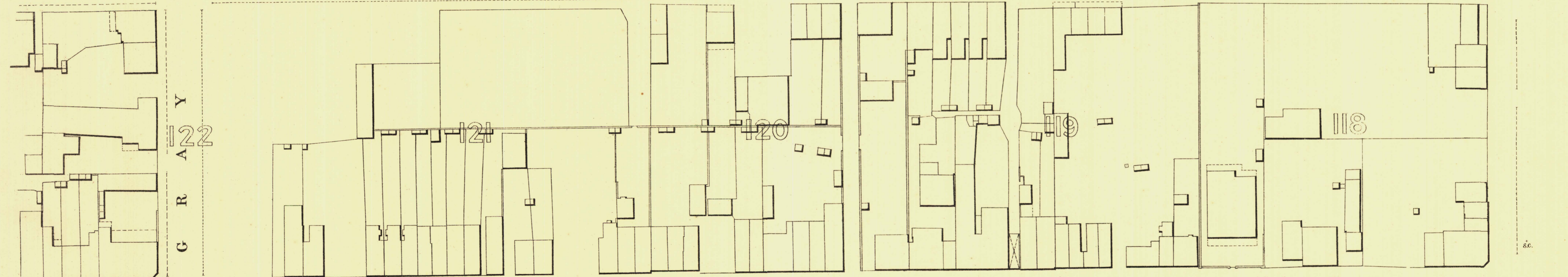
H I N D L E Y S T R E E T



S T R E E T

C L A R K S T R E E T

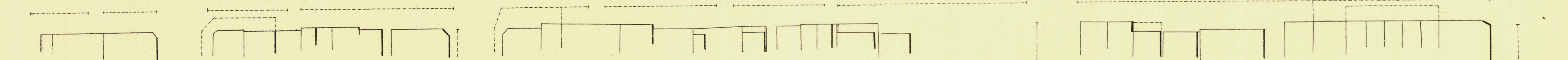
H A W D O N S T R E E T



G R A Y S T R E E T

C U R R I E S T R E E T

L I G H T S Q U A R E



L. Smith
Mayor

Thomas Norton
Town Clerk

100 Feet. 50 0 200 300 Feet

Scale Forty Feet to One Inch

SURVEYOR GENERAL'S OFFICE, ADELAIDE. Drawn by S. Crawford, Photo-lithographer.

REFERENCE

Town Acres shown thus -	□	Fire Plugs shown thus -	○FP
Stone Buildings -	▨	Stop-cocks -	* S.C.
Brick do -	▩	Stand-pipes -	○S.P.
Wood and Iron do -	▧	Lamp-posts -	○L.P.
Pillar Post-offices -	□PO	Telegraph-posts -	○T.P.
Levels -	229-31	Datum 100 Feet below Low-water at Port Adelaide.	

Charles W. Smith
City Engineer
Licensed Surveyor R.P.A.