

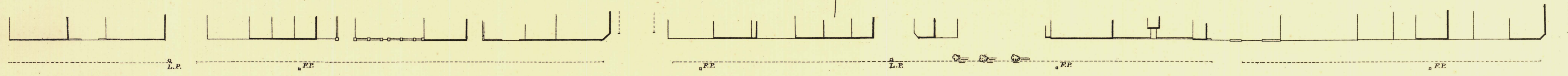
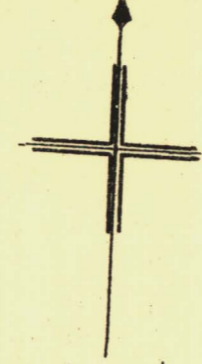
SOUTH ADELAIDE

Sheet N°61.

HINDMARSH WARD

KEY TO ADJOINING SHEETS

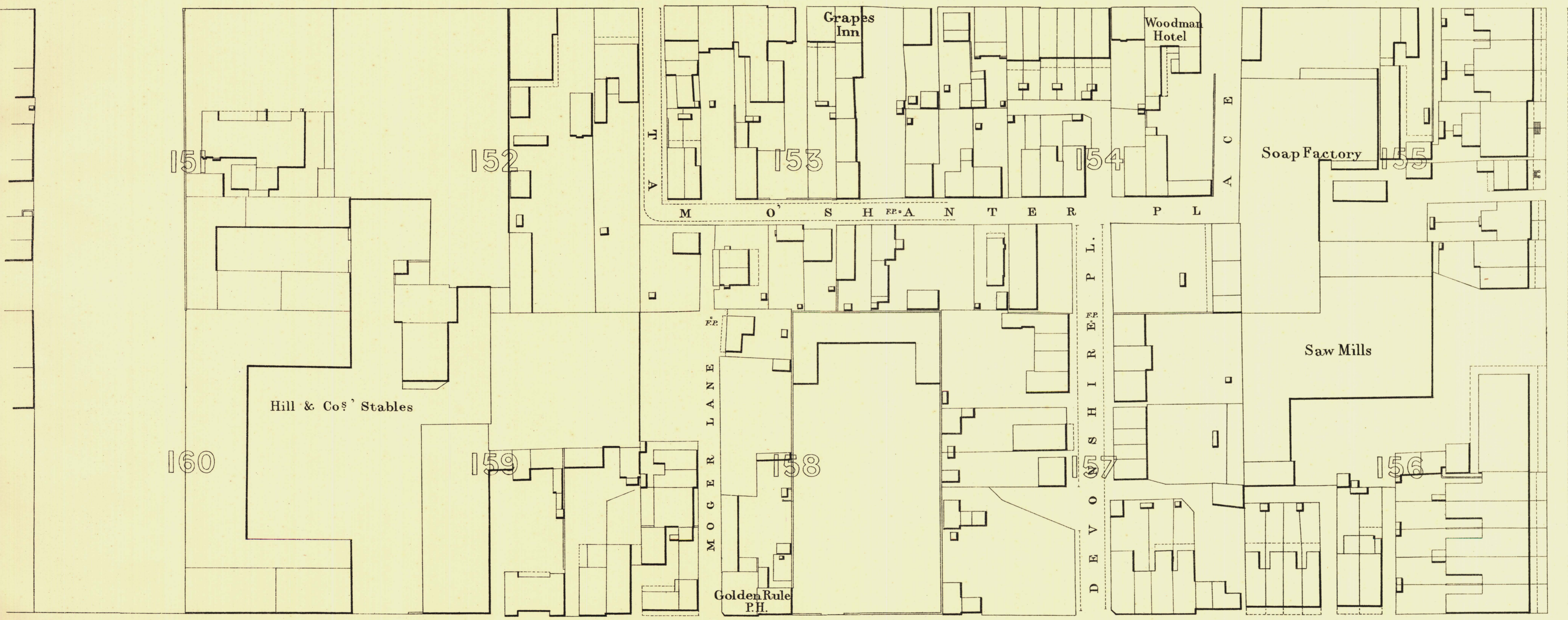
73	74
62	61
58	59
60	60



254-20

253-10 GREENFELL 250-58 247-20 S

24-237

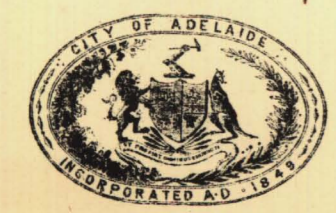


R.
E
T
S
A
P
A
R
K
L
A
N
D
S

256-66

258-50 PIRIE 259-41 258-49 STREET

255-63 255-37



L. Smith Mayor

Thomas Brown Town Clerk

100 Feet 50 .0. Scale Forty Feet to One Inch = 1/480 200 300 Feet

SURVEYOR GENERAL'S OFFICE ADELAIDE, South Australia, 1880

REFERENCE

Town Acres shown thus	□	Fire Plugs shown thus	○FP
Stone Buildings	▒	Stop-cocks	*&C.
Brick do	▒	Stand pipes	○S.P.
Wood and Iron do	▒	Lamp posts	○L.P.
Public Post-offices	□	Telegraph posts	○T.P.
Levels	—	Bottom 100 Feet below Low water at Port Adelaide	—

Charles W. Smith
City Engineer
Licensed Surveyor R.P.A.