

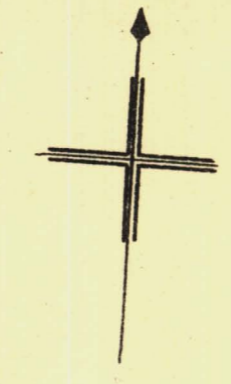
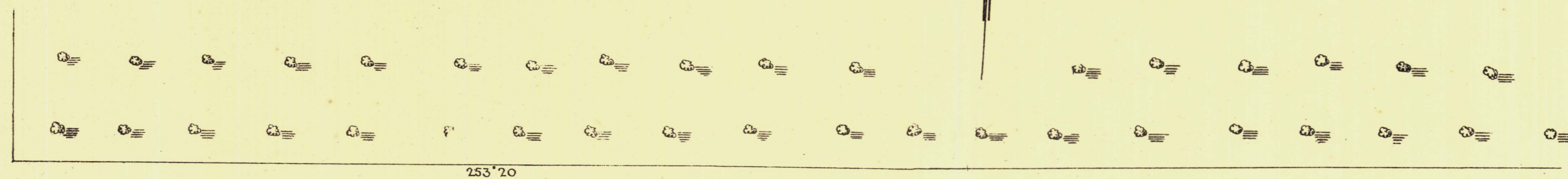
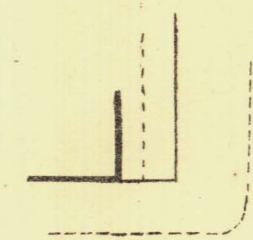
SOUTH ADELAIDE

Sheet N^o 60.

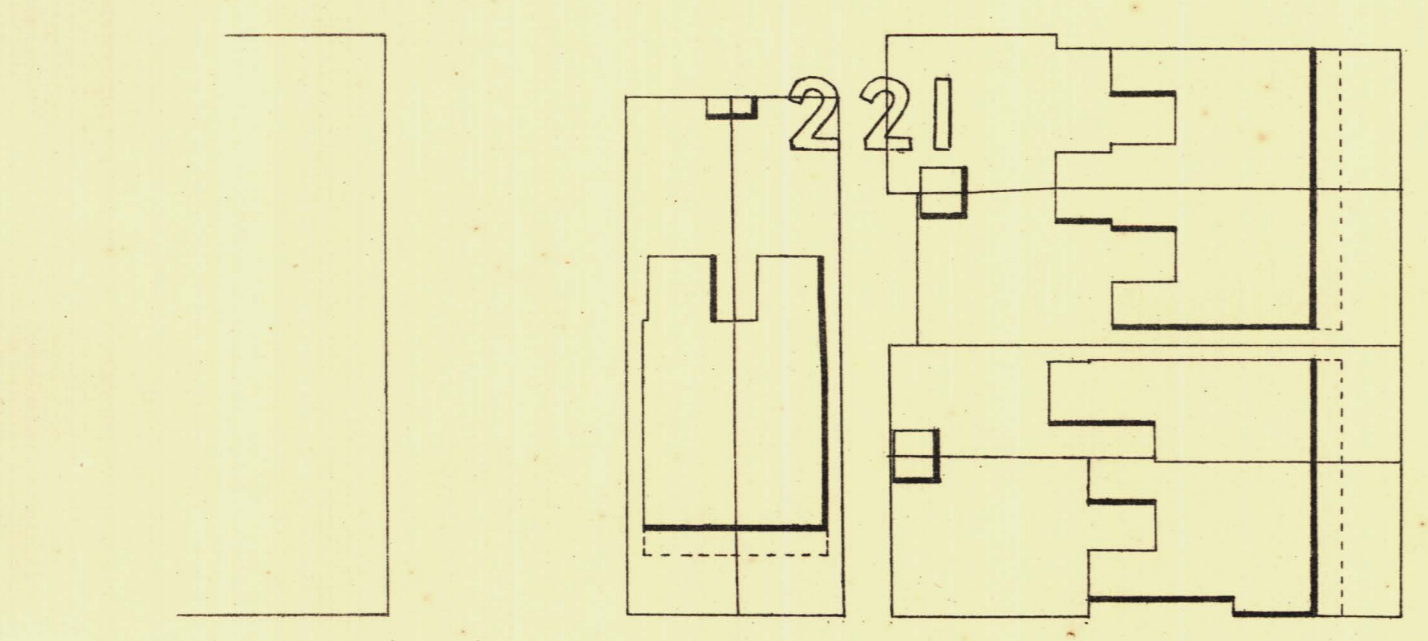
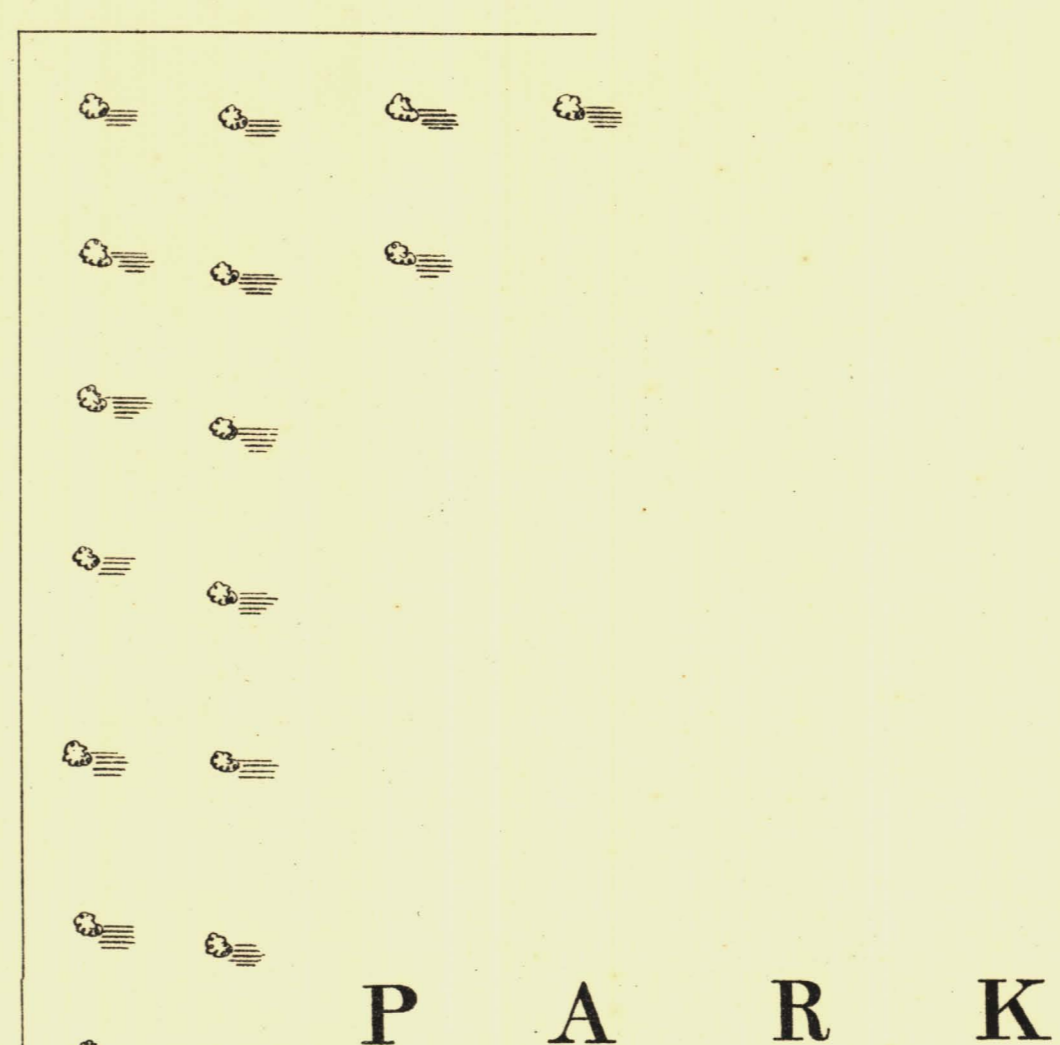
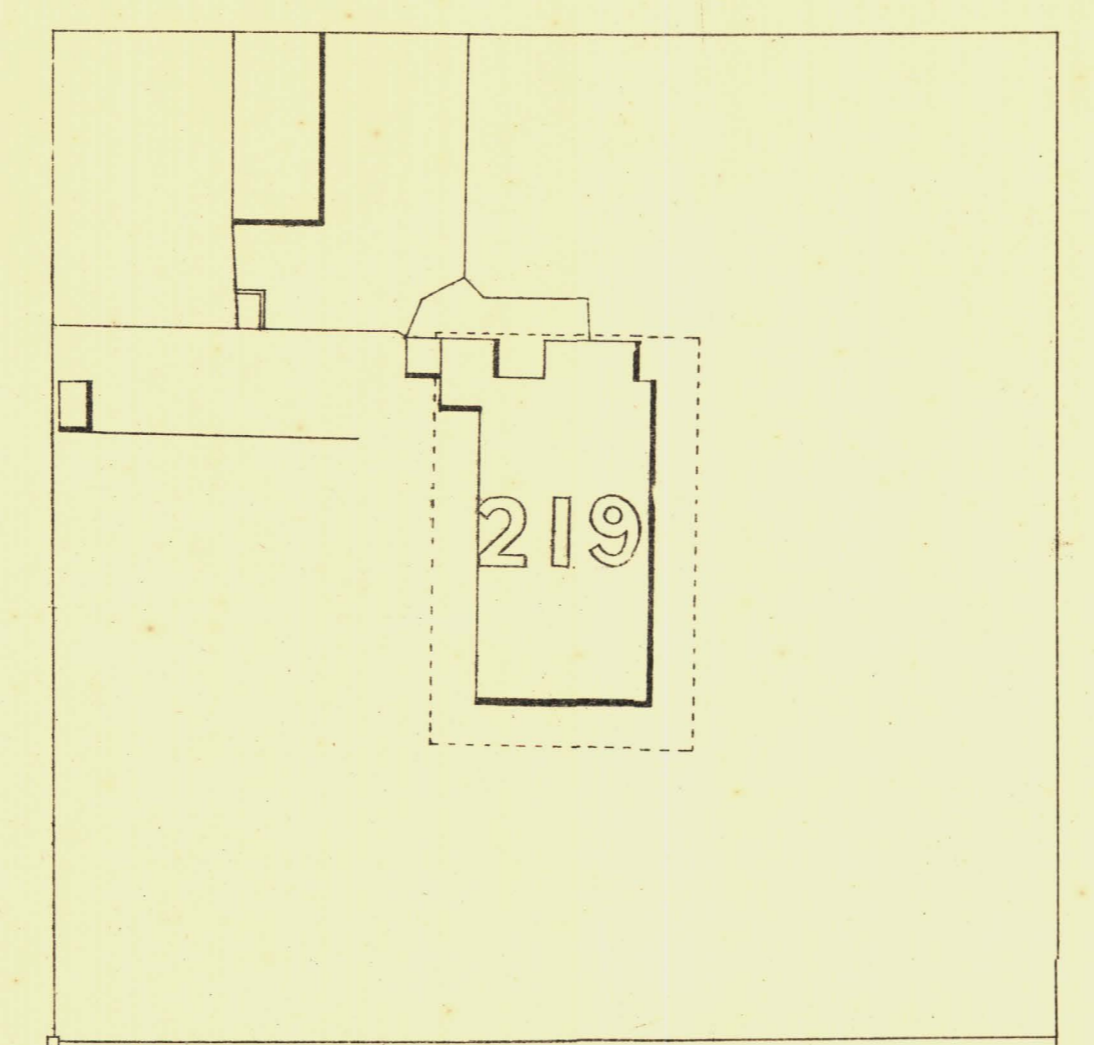
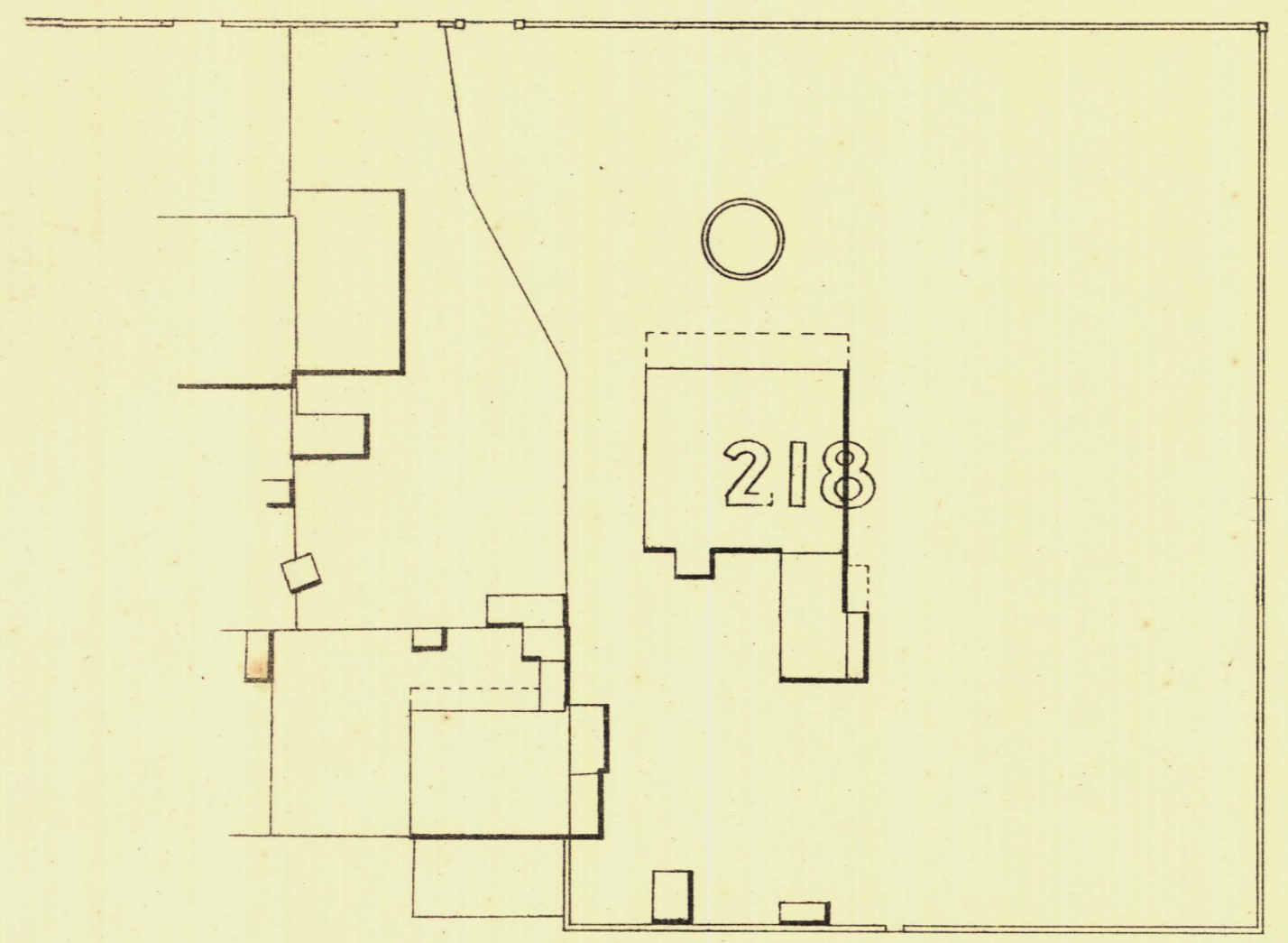
HINDMARSH WARD

KEY TO ADJOINING SHEETS

62	61
58	59
47	46 45



P I R I E S T



T
S
T
U
H

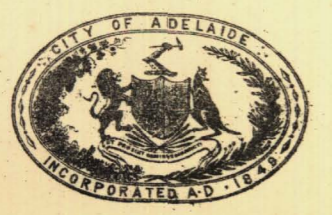
249.60
R
E
T
S
A
E

P A R K L A N D S

F L I N D E R S T

L. Smith
Mayor

Thomas W. Smith
Town Clerk



100 Feet 50 .0. Scale Forty Feet to One Inch = 1/480 200 300 Feet

Scale Forty Feet to One Inch = 1/480

REFERENCE

Town Acres shown thus	144	Fire Flugs shown thus	o.F.P.
Stone Buildings	—	Stop-cocks	o.S.C.
Brick do	—	Stand pipes	o.S.P.
Wood and Iron do	—	Lamp posts	o.L.P.
Pillar Post-offices	o.P.O.	Telegraph posts	o.T.P.
Levels	229-31	Datum 100 Feet below Low-water at Port Adelaide.	

Charles W. Smith
City Engineer
Licensed Surveyor R.P.A.