

SOUTH ADELAIDE

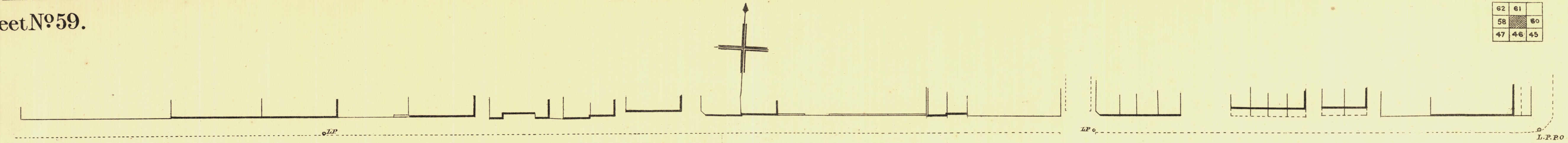
Sheet N<sup>o</sup> 59.

HINDMARSH WARD

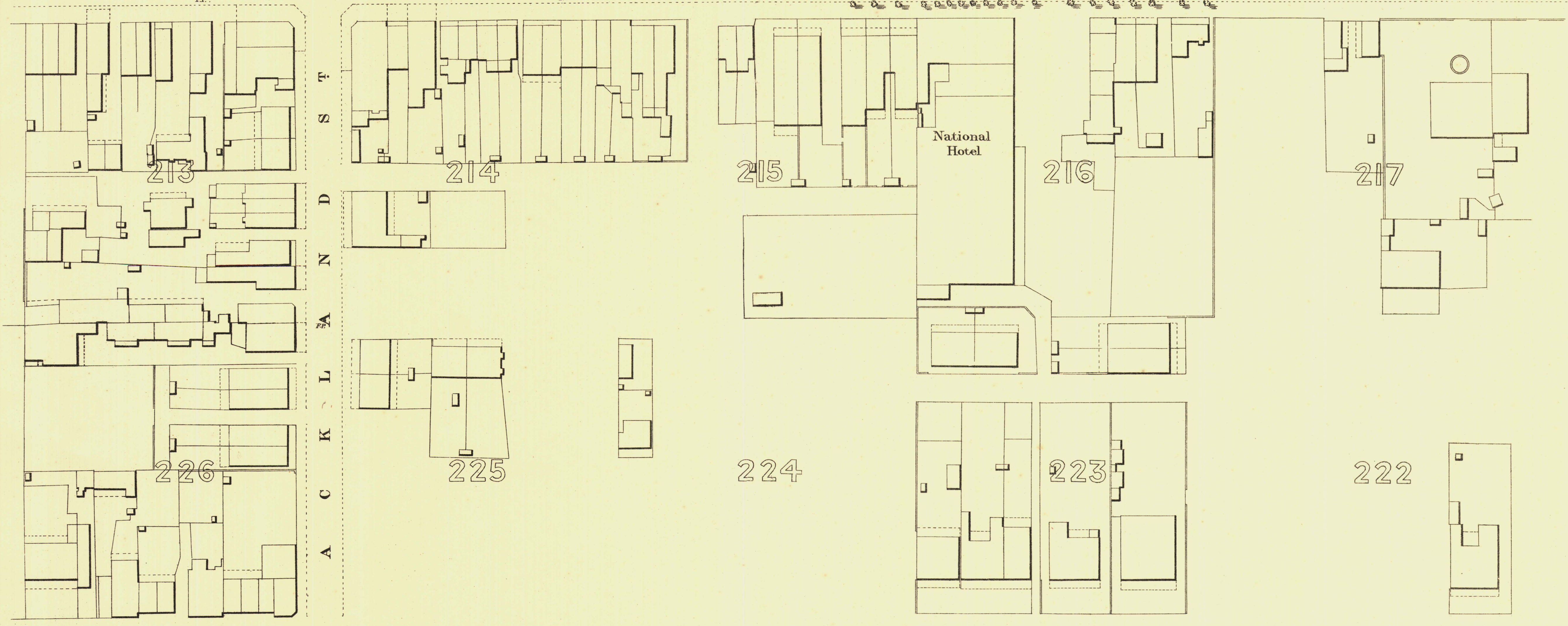
KEY TO ADJOINING SHEETS

62	61
58	60
47	46 45

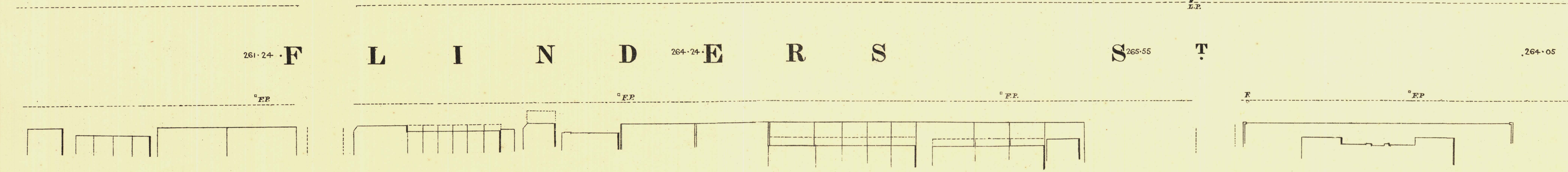
EAST TER



P I R R I E S T R E E T



T  
S  
D  
N  
A  
L  
K  
C  
A



L I N D E R S T

259-82 261-24 F 264-24 E 265-55 T 264-05



*L. Smith*  
Mayor

*Thomas Wortrup*  
Town Clerk

100 Feet 50 0 200 300 Feet

Scale Forty Feet to One Inch =  $\frac{1}{480}$

SURVEYOR GENERAL'S OFFICE, ADELAIDE, DRAWN BY G. G. G. PHOTOGRAPHED BY

REFERENCE

Town Acres shown thus	[Symbol]	Fire Plugs shown thus	[Symbol]
Stone Buildings	[Symbol]	Stop-cocks	[Symbol]
Brick do	[Symbol]	Stand-pipes	[Symbol]
Wood and Iron do	[Symbol]	Lamp-posts	[Symbol]
Pillar Post-offices	[Symbol]	Telegraph-posts	[Symbol]
Levels	[Symbol]	Datums 100 Feet below Low-water at Port Adelaide	[Symbol]

*Charles W. Smith*  
City Engineer  
Licensed Surveyor R.P.A.