

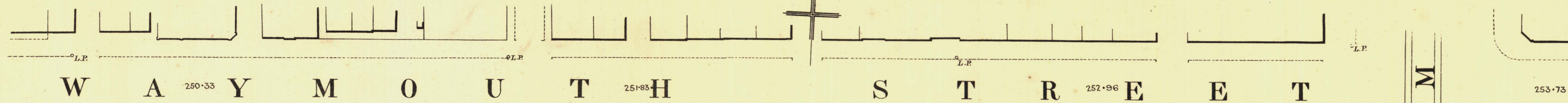
SOUTH ADELAIDE

CAWLER WARD

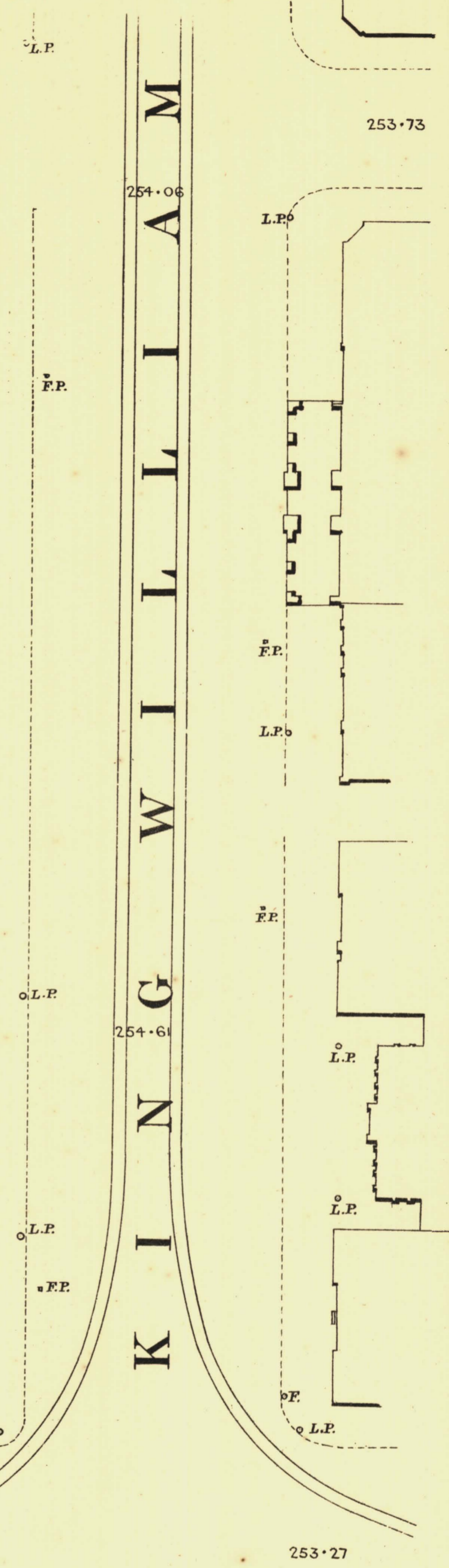
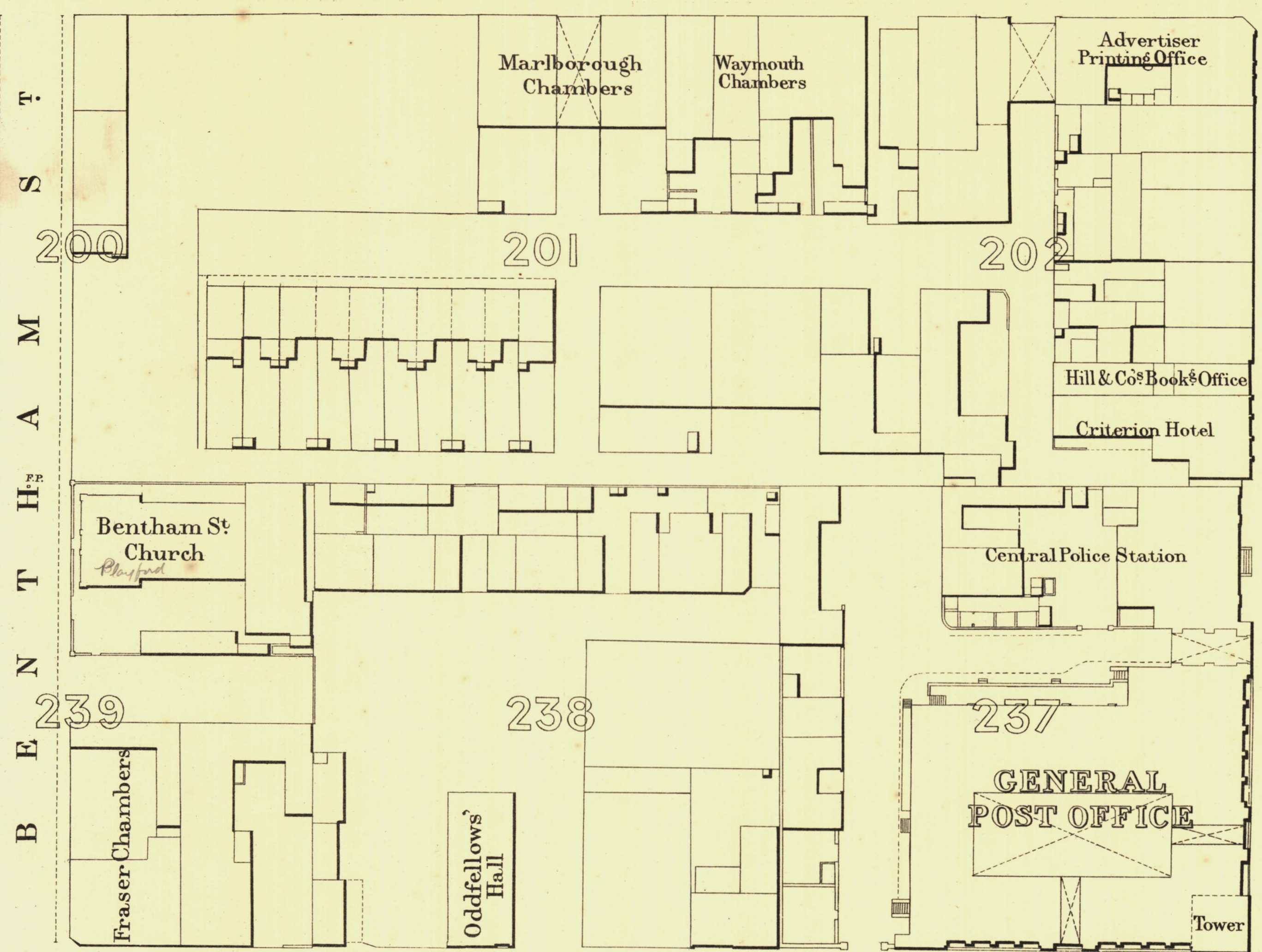
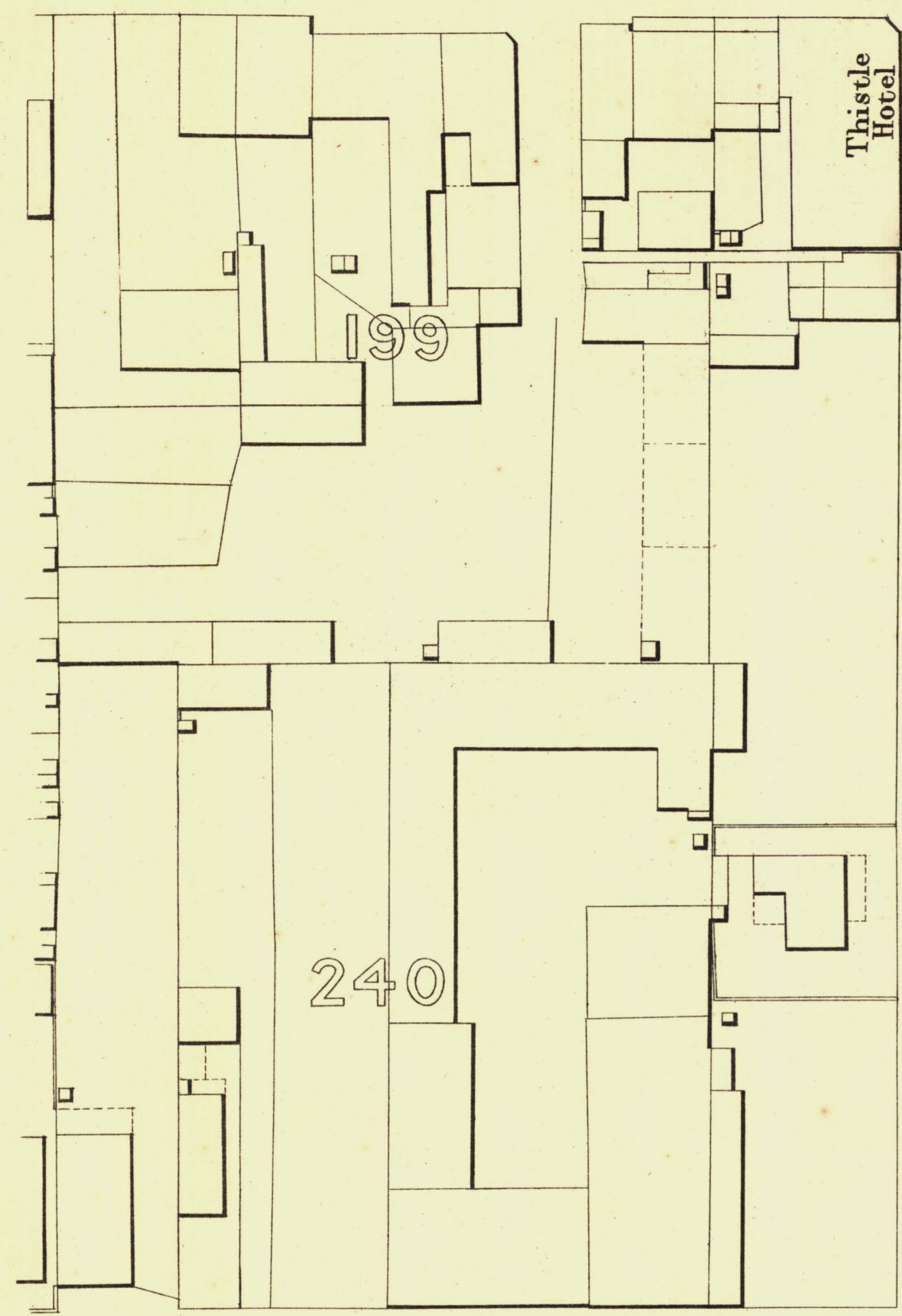
KEY TO ADJOINING SHEETS

Sheet No 56

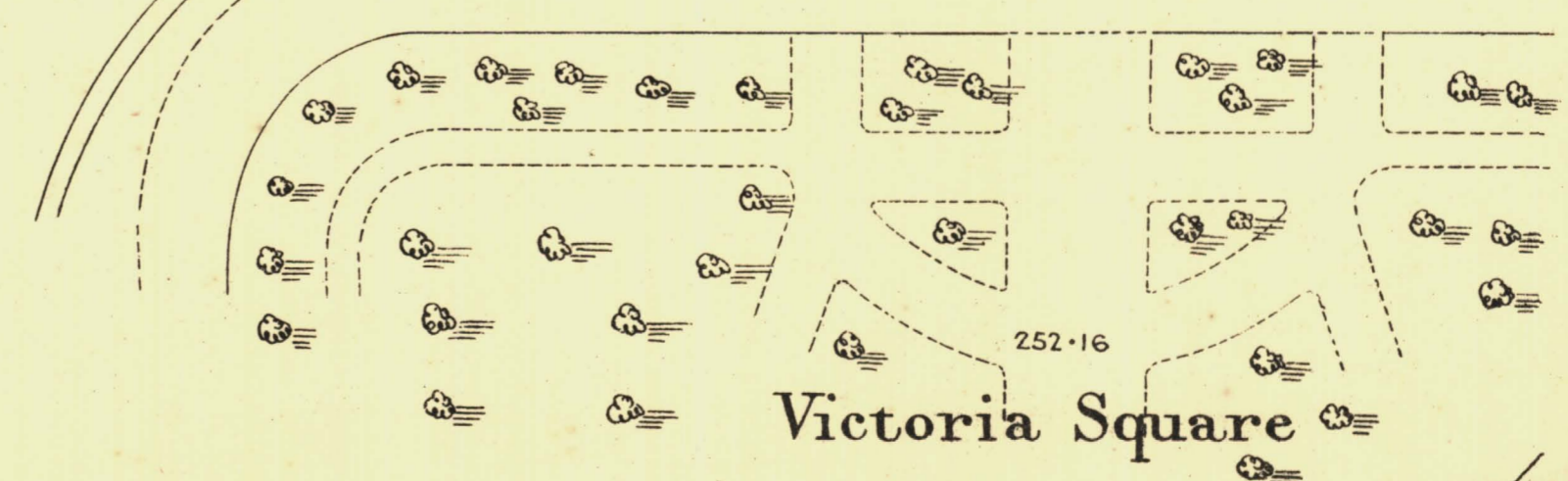
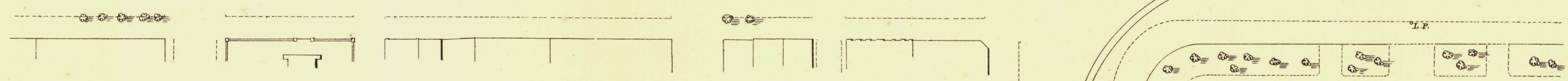
|    |    |    |
|----|----|----|
| 56 | 64 | 63 |
| 55 | 57 |    |
| 50 | 49 | 48 |



W A Y M O U T H S T R E E T



F R A N K L I N S T R E E T



*L. Smith*  
Mayor

*Thomas Brown*  
Town Clerk

Scale Forty Feet to One Inch

SURVEYOR GENERAL'S OFFICE, ADELAIDE, From S. Crawford's Photogram

REFERENCE  
 Town Acres shown thus - 1/4  
 Stone Buildings - 1/4  
 Brick do - 1/4  
 Wood and Iron do - 1/4  
 Pillar Post-offices - 1/4  
 Levels - 229-31 Datum 100 Feet below Low water at Port Adelaide.

Fire Plugs shown thus - 1/4  
 Stop cocks - 1/4  
 Stand pipes - 1/4  
 Lamp posts - 1/4  
 Telegraph posts - 1/4

*Charles W. Smith*  
City Engineer  
Licensed Surveyor R.P.A.