

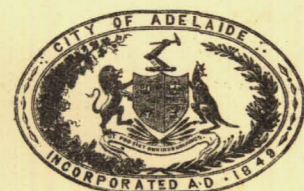
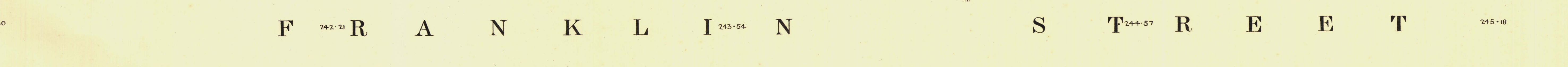
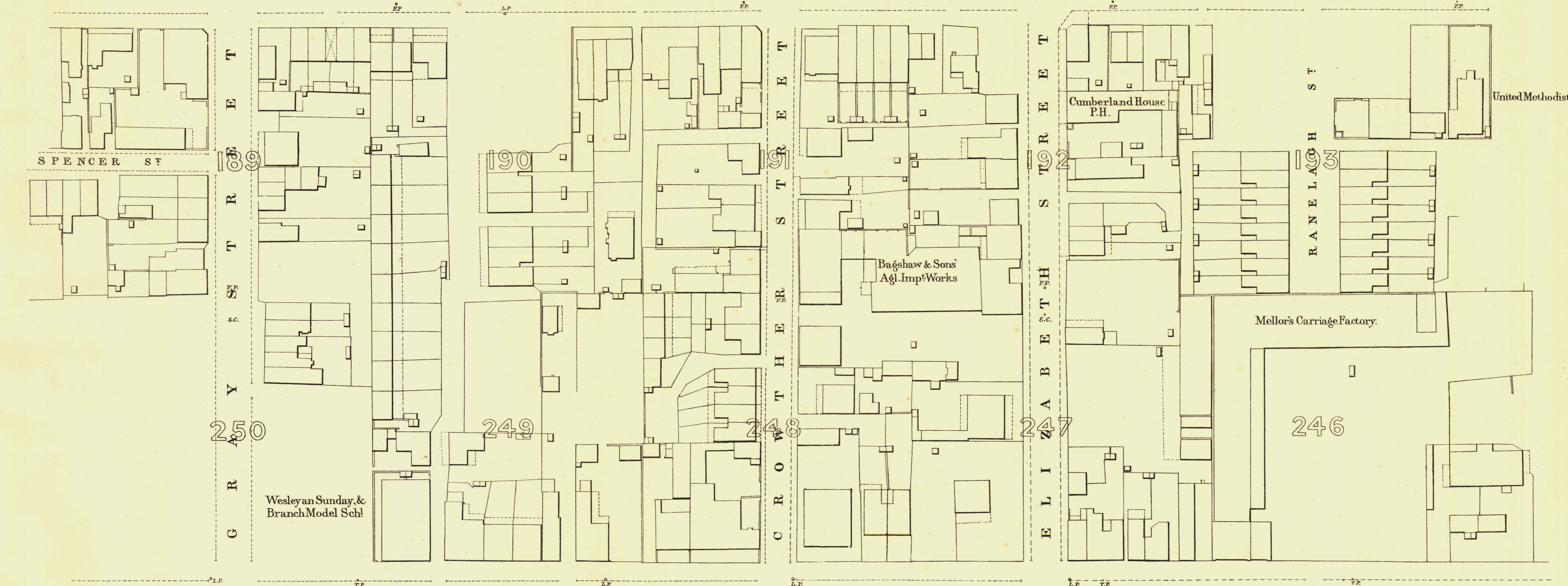
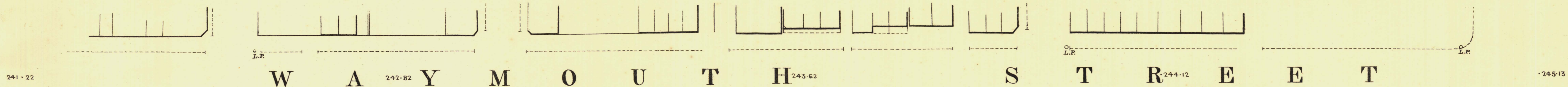
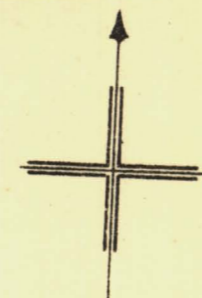
SOUTH ADELAIDE

Sheet N^o 54.

CAWLER WARD

KEY TO ADJOINING SHEETS

67	66	65
53	55	
52	51	50



L. Smith
Mayor

Thomas W. Smith
Town Clerk

Scale Forty Feet to One Inch
100 Feet 50 0 100 200 300 Feet

SURVEYOR GENERAL'S OFFICE, ADELAIDE. Drawn by G. S. G. and others. Photo-lithographed.

REFERENCE

Town Acres shown thus	— [] —	Fire Flays shown thus	— [] —
Stone Buildings	— [] —	Stop-cocks	— [] —
Brick do	— [] —	Stand-pipes	— [] —
Wood and Iron do	— [] —	Lamp-posts	— [] —
Pillar Post-offices	— [] —	Telegraph posts	— [] —
Treels	— [] —	Datum: 100 Feet below Low water at Port Adelaide.	

Charles W. Smith
City Engineer
Licensed Surveyor R.P.A.