

SOUTH ADELAIDE

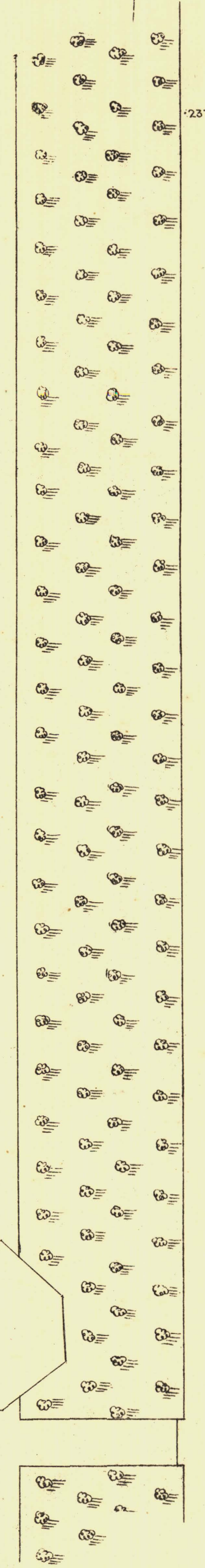
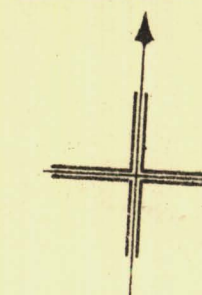
Sheet N<sup>o</sup> 53.

CAWLER WARD

KEY TO ADJOINING SHEETS

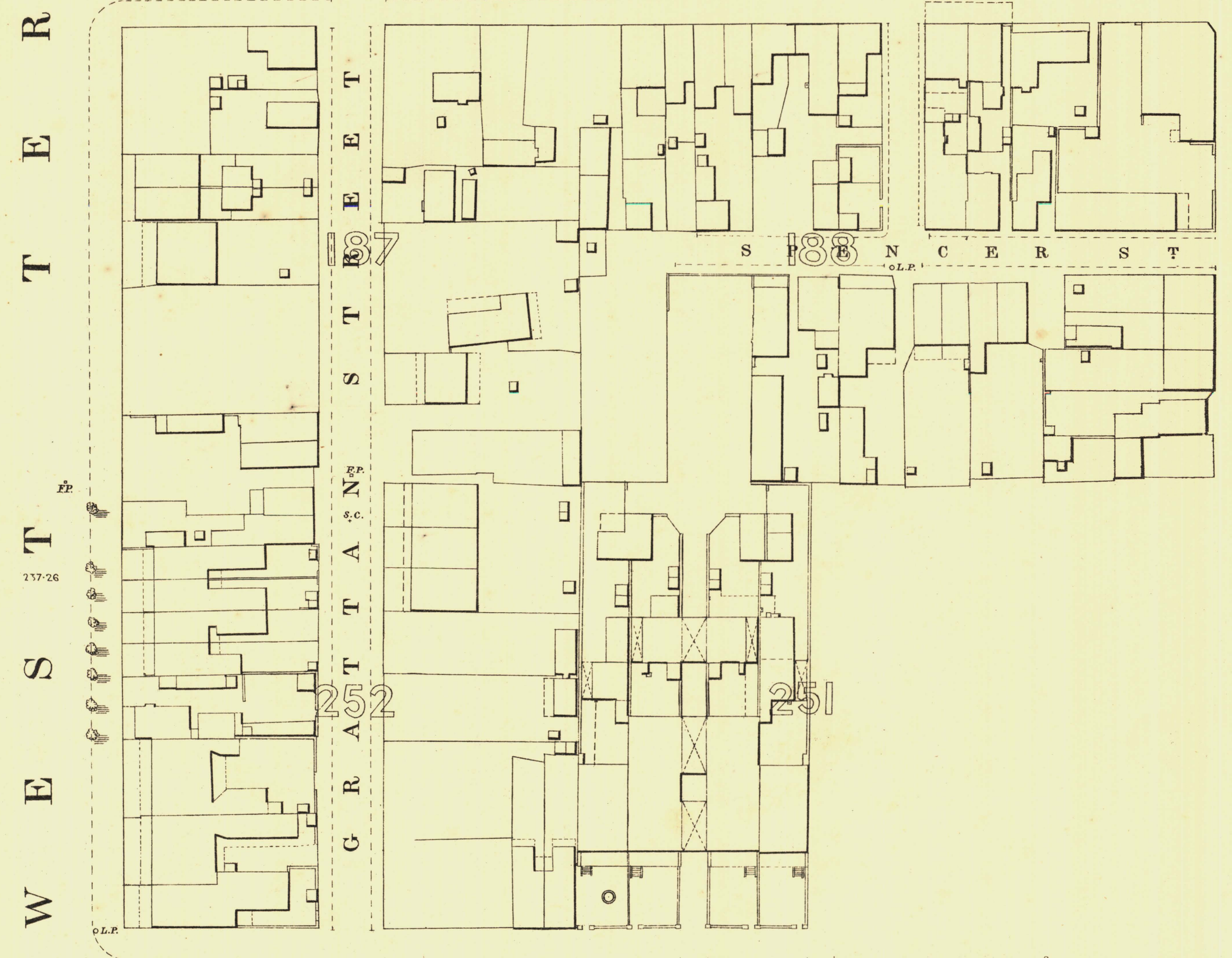
67	66	65
54	55	50
52	51	50

P A R K L A N D S

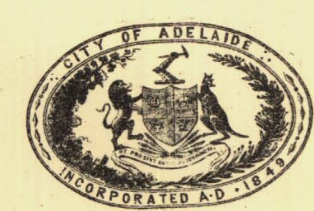


Signal Station

W A Y M O U T H S T



F R A N K L I N S T



*L. Smith* Mayor

*Thomas ...* Town Clerk

Scale Forty Feet to One Inch

REFERENCE

Thin Acres shown thus - 1/4	Fire Flugs shown thus -	o.F.P.
Stone Buildings -	Stop-cocks -	s.c.
Brick do -	Stand-pipes -	s.p.
Wood and Iron do -	Lamp-posts -	l.p.
Pillar Post-offices -	Telegraph-posts -	t.p.
Levels -	229-31 Datum 100 Feet below Low-water at Port Adelaide.	

*Charles W. Smith*  
City Engineer  
Licensed Surveyor R.P.A.