

SOUTH ADELAIDE

Sheet N<sup>o</sup> 51.

CAWLER WARD

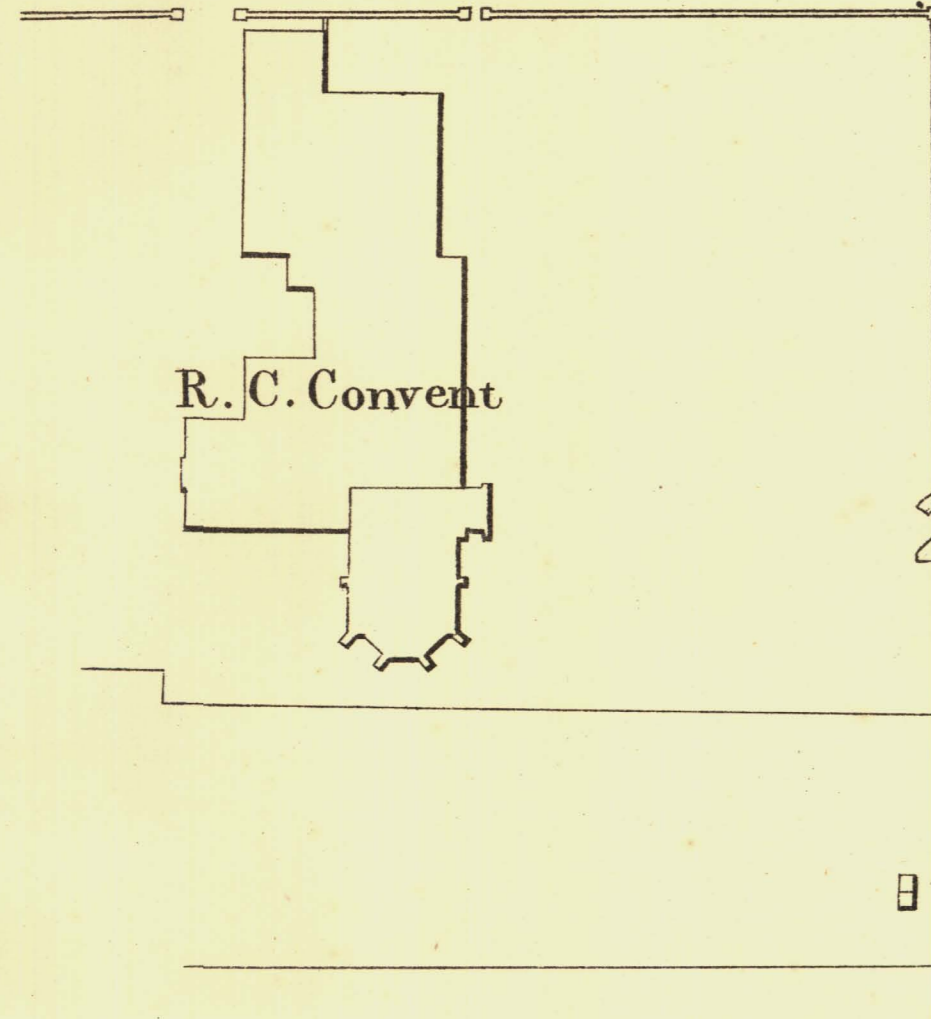
KEY TO ADJOINING SHEETS

53	54	55
52	51	50
57	58	59

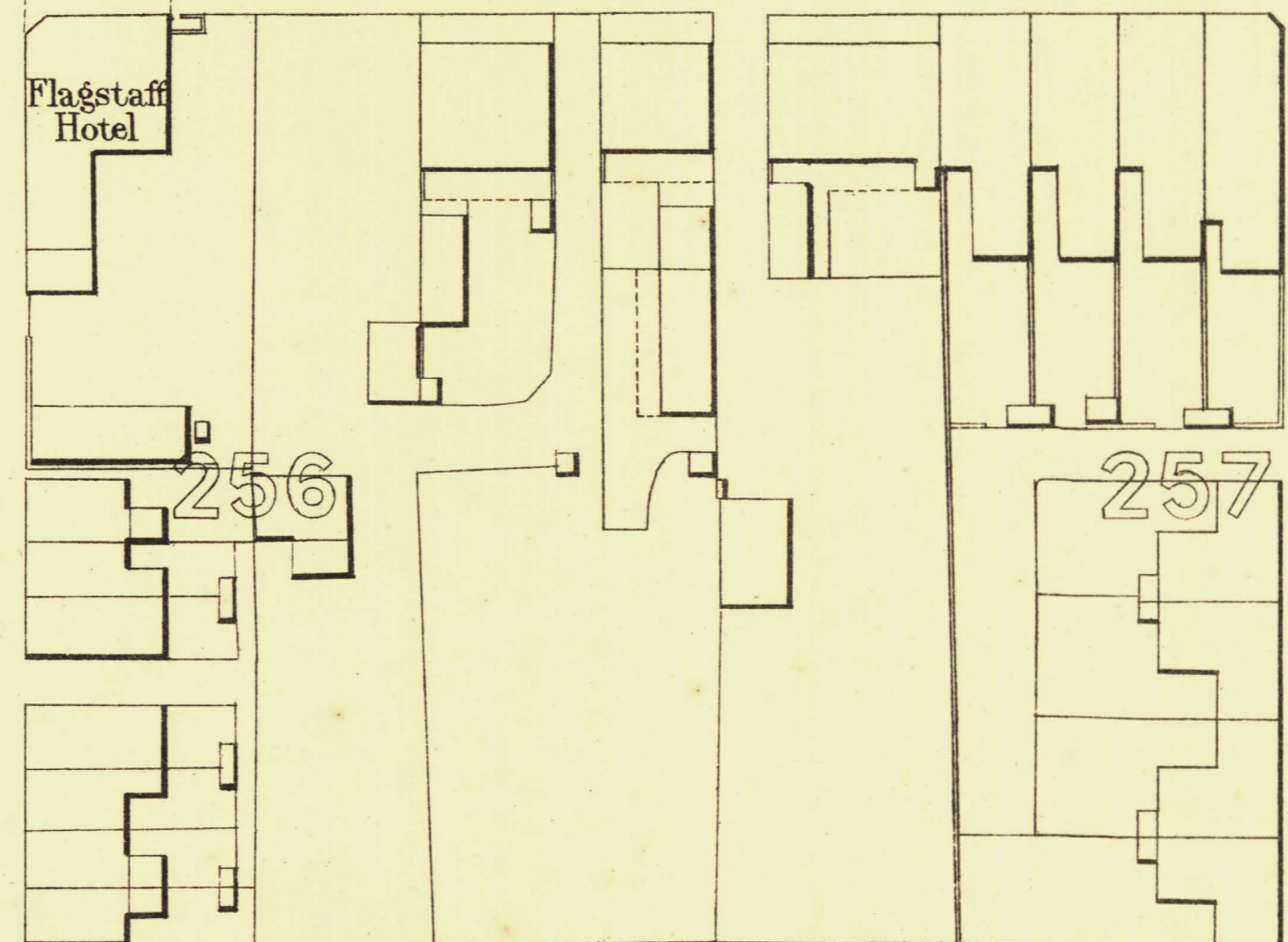
240-30

F R A<sup>242-21</sup> N K L I N : 243-54 S T R<sup>244-57</sup> E E T

245-18



255

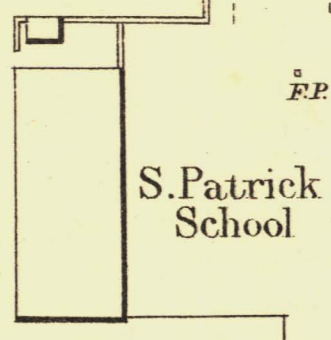


256

257

258

259



318

317

316

315

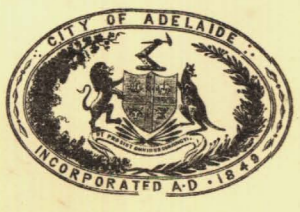
314

241-13 G R O T E

242-35

S T R<sup>243-08</sup> E E T

244-37



*L. Smith* Mayor

*Thomas Hornum* Town Clerk

100 Feet 50 0 200 300 Feet

Scale Forty Feet to One Inch

SURVEYOR GENERAL'S OFFICE, ADELAIDE. From S. Overford, Photolithographer

REFERENCE

Town Acres shown thus	— —	Fire Plugs shown thus	□EP
Stone Buildings	— —	Stop-cocks	□S.C.
Brick do	— —	Stand pipes	□S.P.
Wood and Iron do	— —	Lamp posts	□L.P.
Pillar Post-offices	□P.O.	Telegraph posts	□T.P.
Levels	—229-31	Datum 100 Feet below Low-water at Port Adelaide.	

*Charles W. Smith*  
City Engineer  
Licensed Surveyor R.P.A.