

SOUTH ADELAIDE

Sheet N^o 50.

CAWLER WARD

KEY TO ADJOINING SHEETS

54	55	56
51	52	49
38	39	40



245-18

F R A

246-48

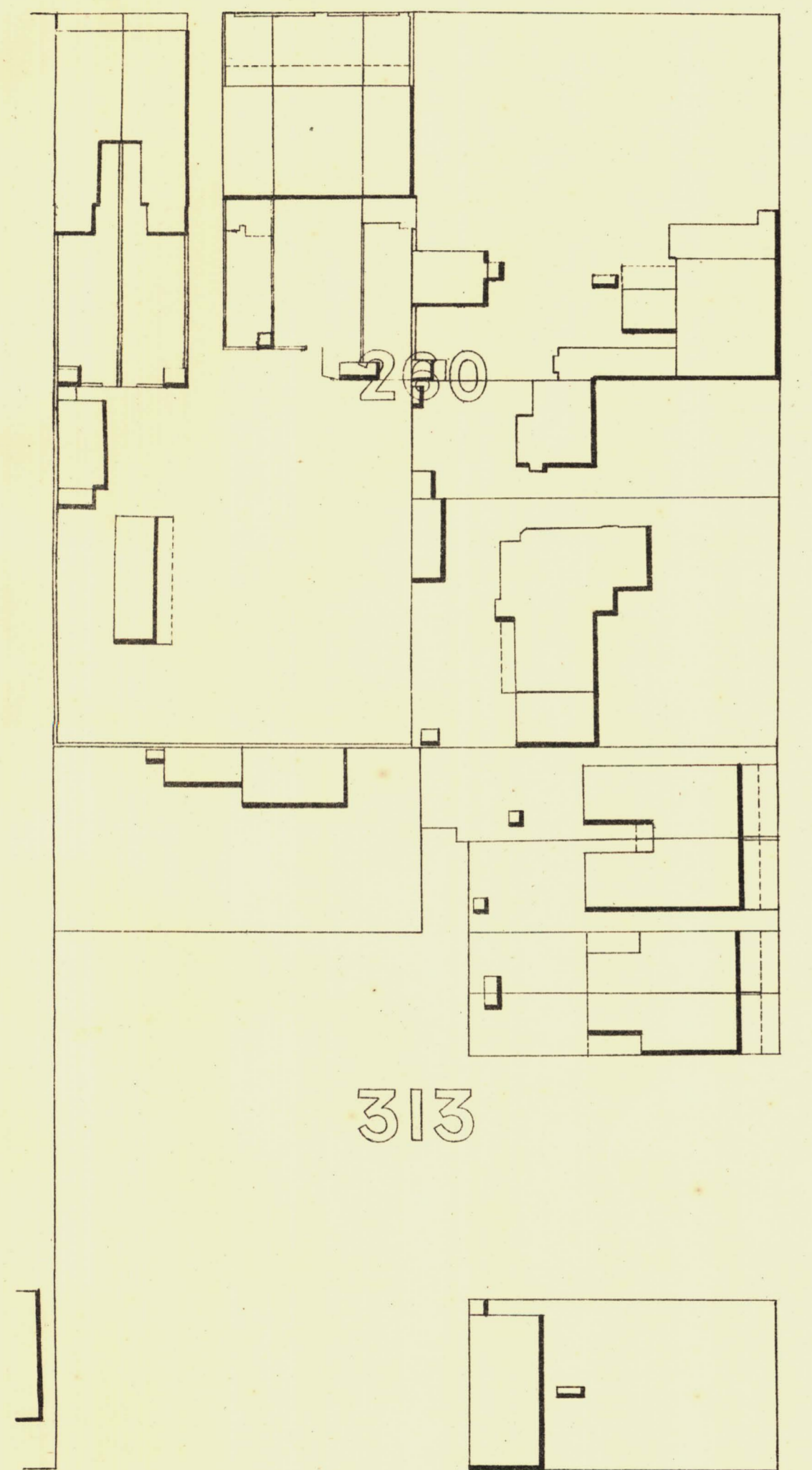
N K L I N

248-08

S T R E E T

249-74

E T



M O R P H E T T S T

F.P.
S.C.
245-78



K N O S T R E E

B O W E N S T

V I C T O R I A P L

G R O T E

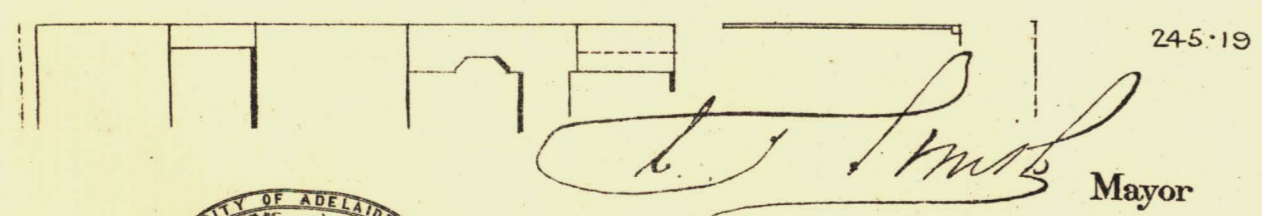
246-61

S T R E E T

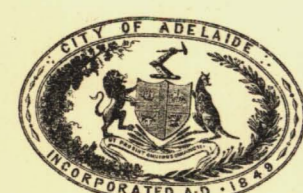
247-73

E T

248-66

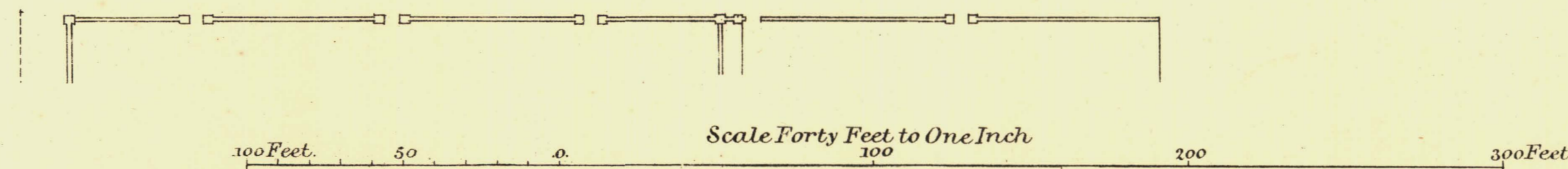


245-19



L. Smith
Mayor

Thomas W. Smith
Town Clerk



SURVEYOR GENERAL'S OFFICE, ADELAIDE. *Printed by S. Owenford, Photo-lithographer.*

REFERENCE

Town Acres shown thus	100	Fire Plugs shown thus	F.P.
Stone Buildings	[Symbol]	Stop cocks	S.C.
Brick do	[Symbol]	Stand pipes	S.P.
Wood and Iron do	[Symbol]	Lamp-posts	L.P.
Pillar Post-offices	[Symbol]	Telegraph-posts	T.P.
Levels	229-31	Datum 100 Feet below Low-water at Port Adelaide.	

Charles W. Smith
City Engineer
Licensed Surveyor R.F.A.