

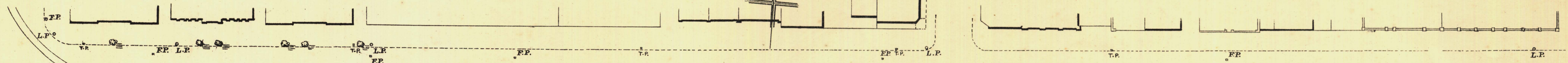
SOUTH ADELAIDE

Sheet N^o 48.

HINDMARSH WARD

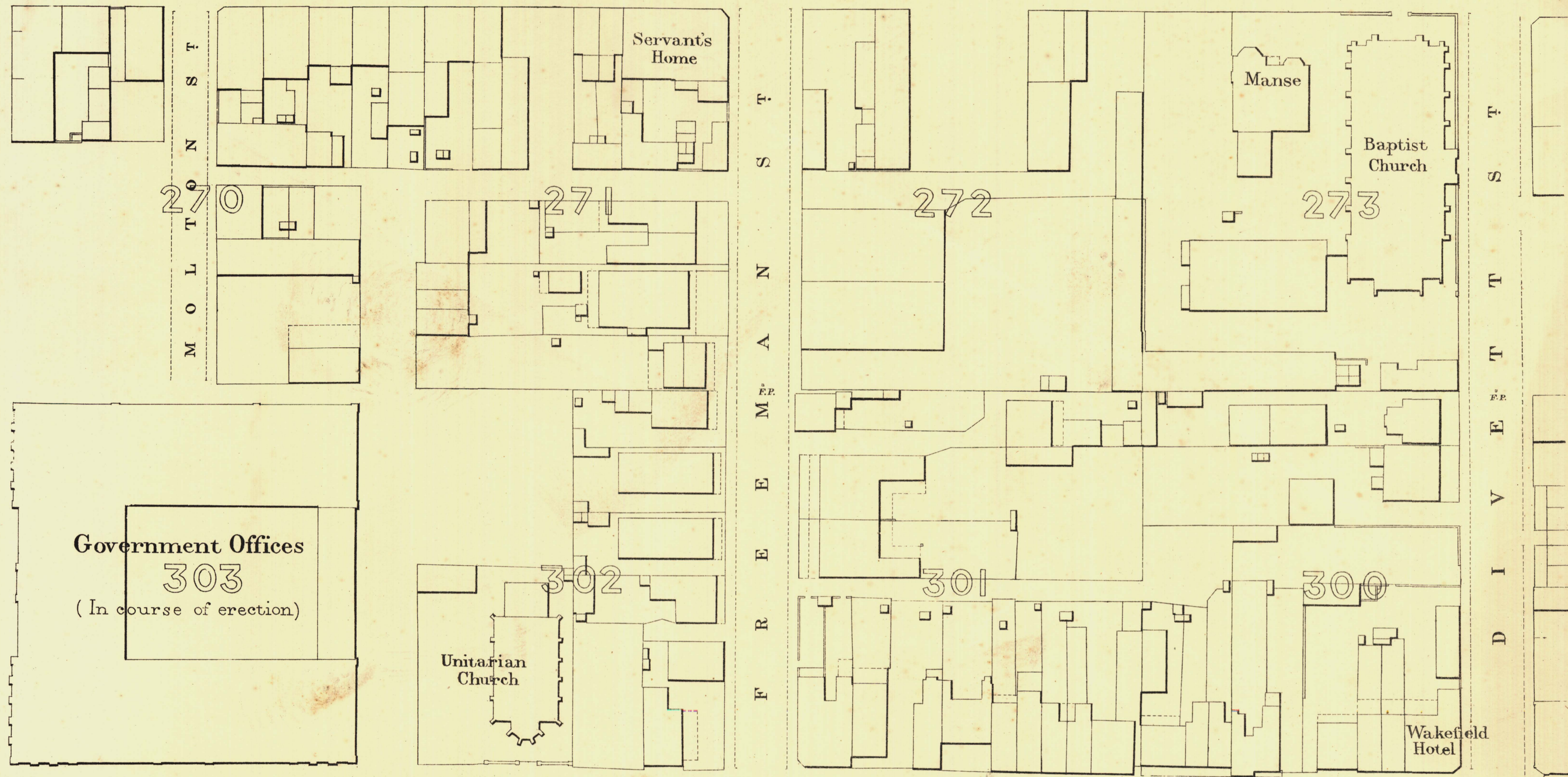
KEY TO ADJOINING SHEETS

56	57	58
49	47	
40	41	42

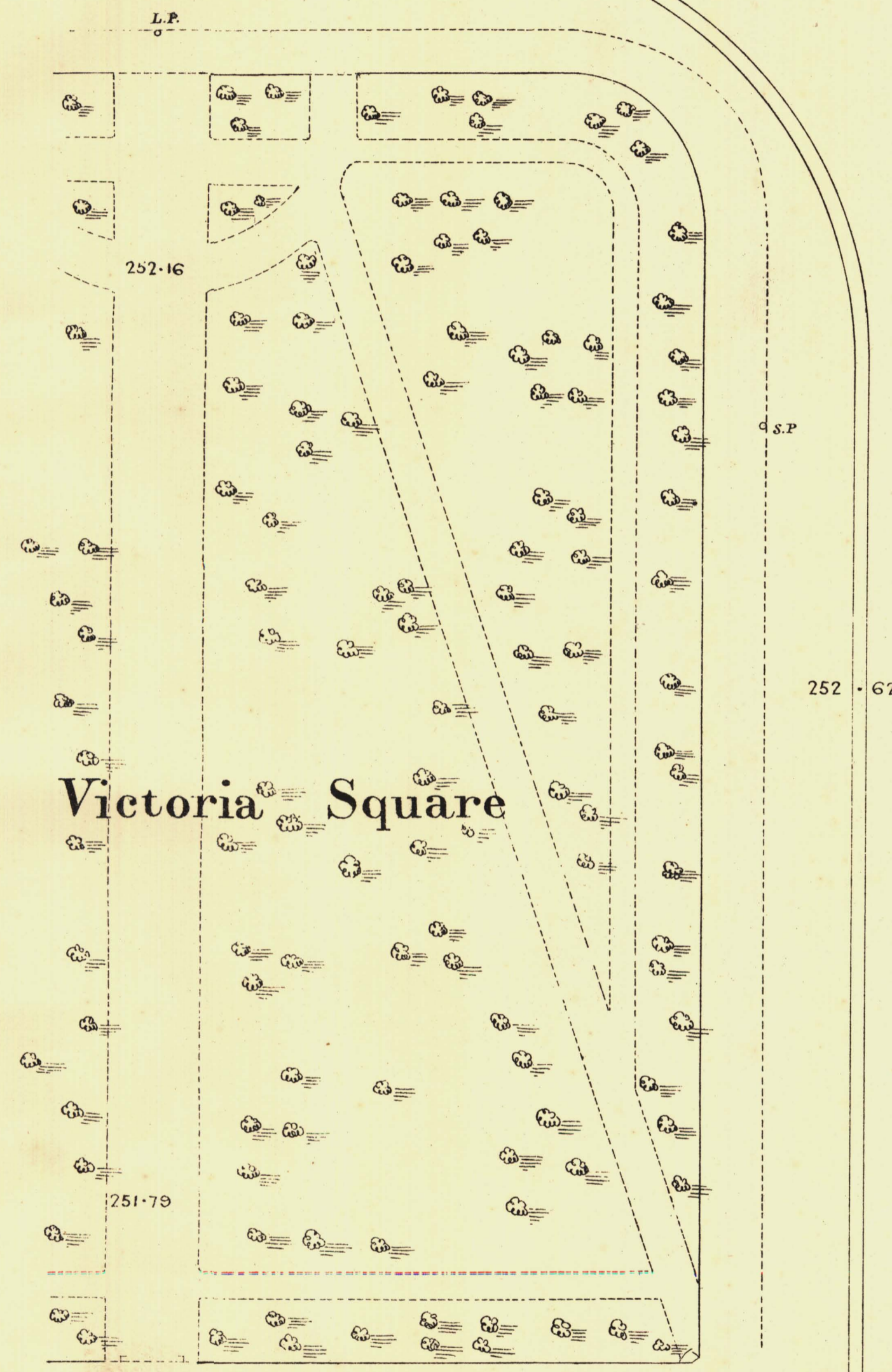


F L I N D E R S

S T



W A K E F I E L D



Victoria Square



L. Smith Mayor

Thomas W. ... Town Clerk

Scale Forty Feet to One Inch = $\frac{1}{480}$

SURVEYOR GENERAL'S OFFICE, ADELAIDE, Printer: G. G. ...

REFERENCE

Town Acres shown thus	□	Fire Flugs shown thus	○FP
Stone Buildings	▒	Stop-cocks	○SC
Brick do	▒	Stand pipes	○SP
Wood and Iron do	▒	Lump-posts	○LP
Pillar Post-offices	○PO	Telegraph-posts	○TP
Levels	—	Datum 100 Feet below Low-water at Port Adelaide.	

Charles W. Smith
City Engineer
Licensed Surveyor R.P.A.