

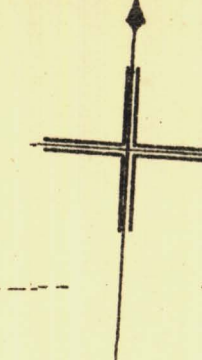
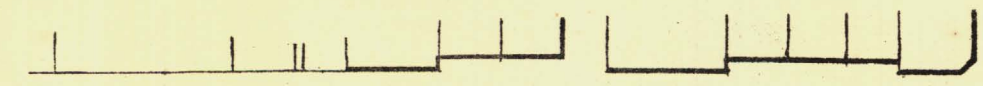
SOUTH ADELAIDE

Sheet N^o 46.

HINDMARSH WARD

KEY TO ADJOINING SHEETS

58	59	60
47	48	45
42	43	44



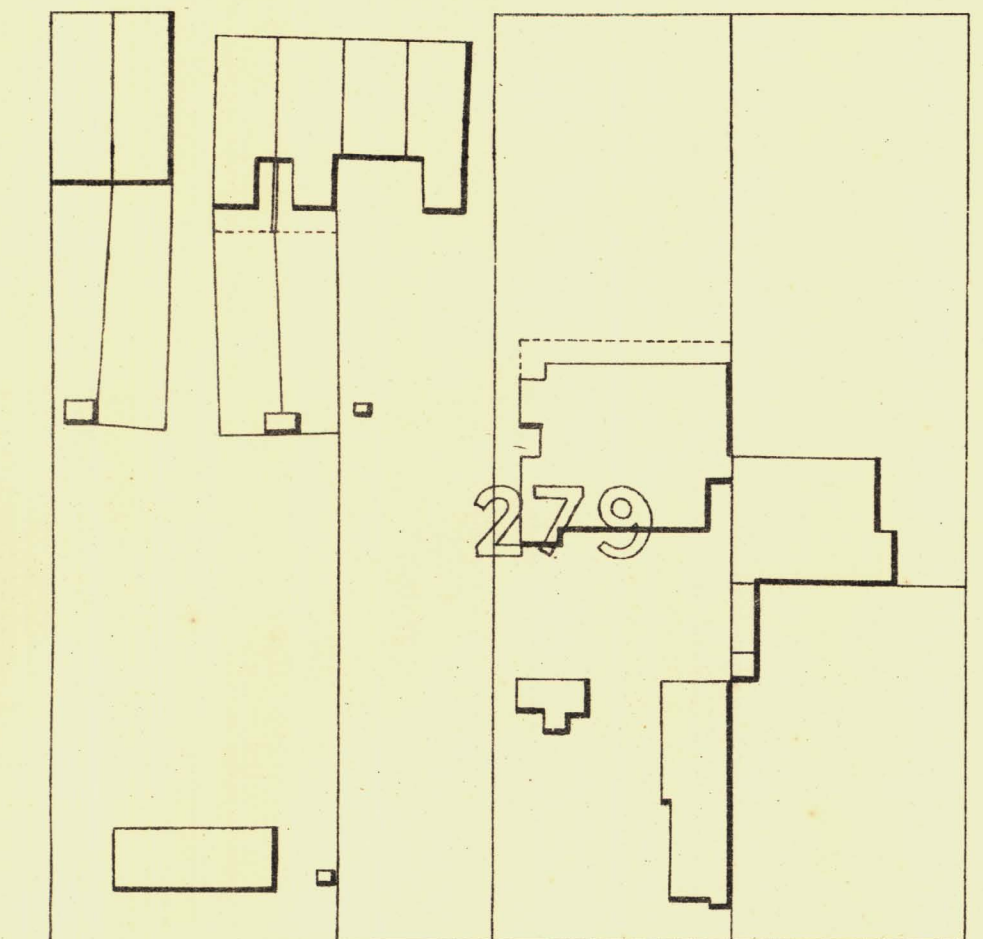
261 · 24

F L I N D E R S

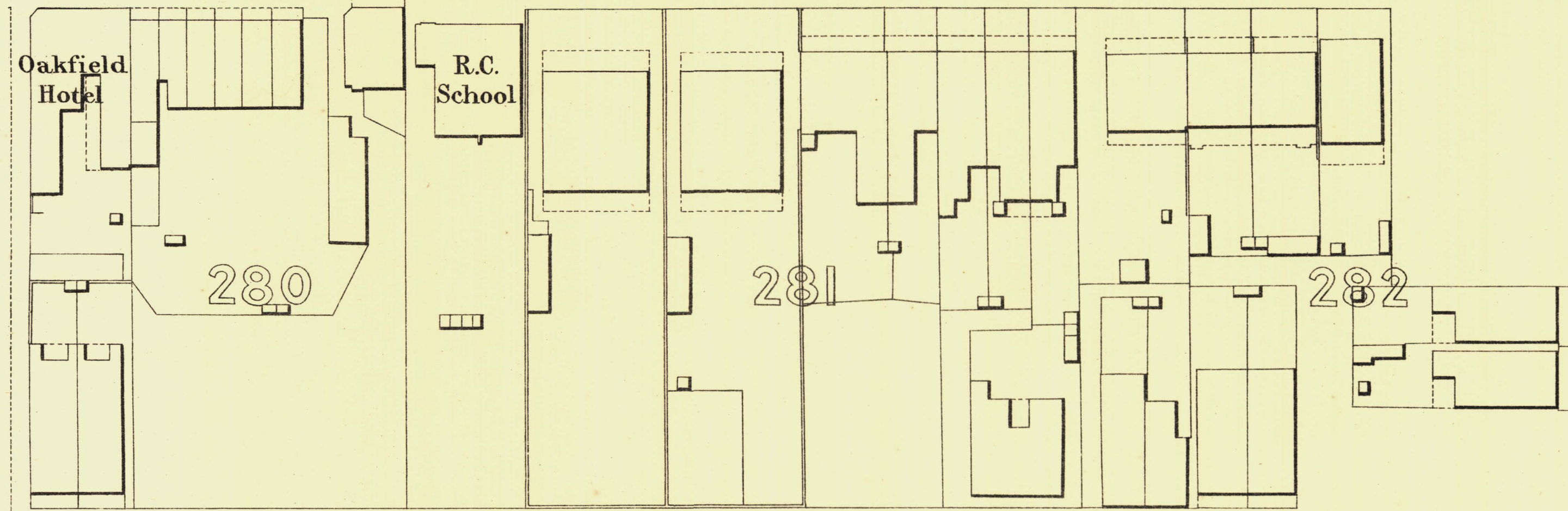
265 · 55

S T

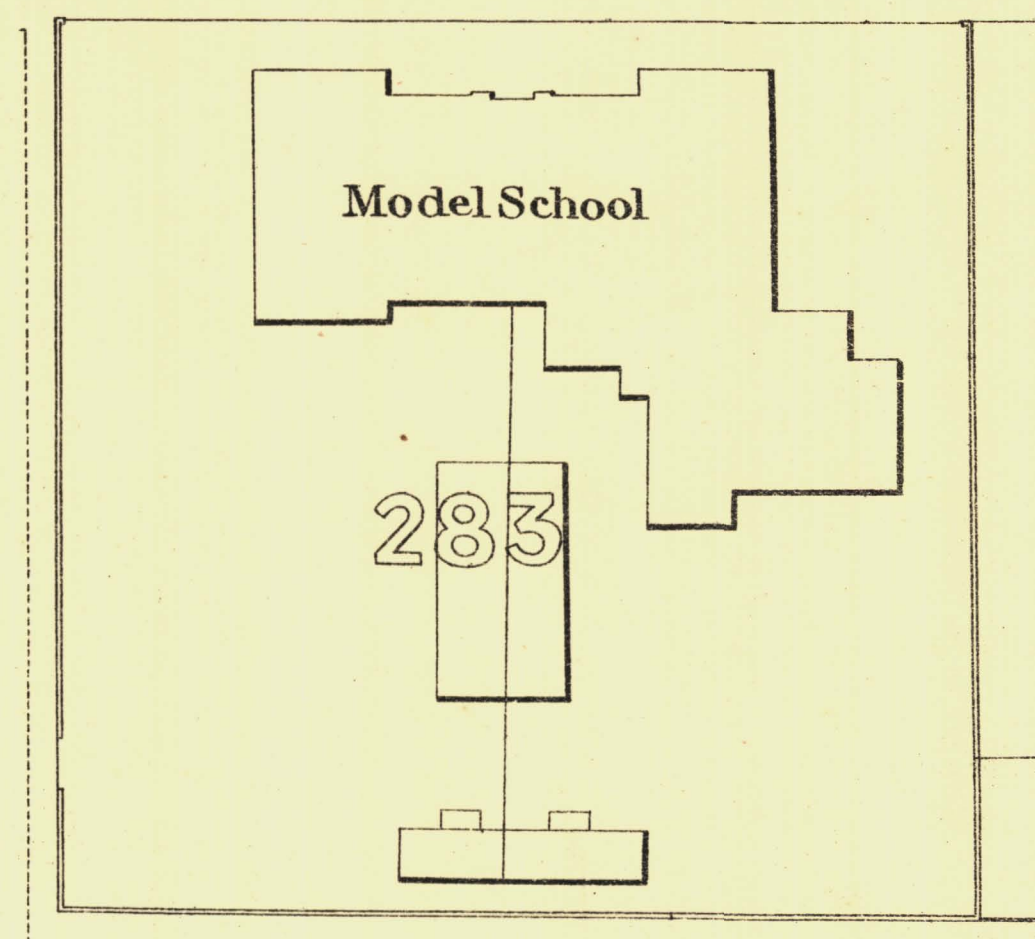
264 · 04



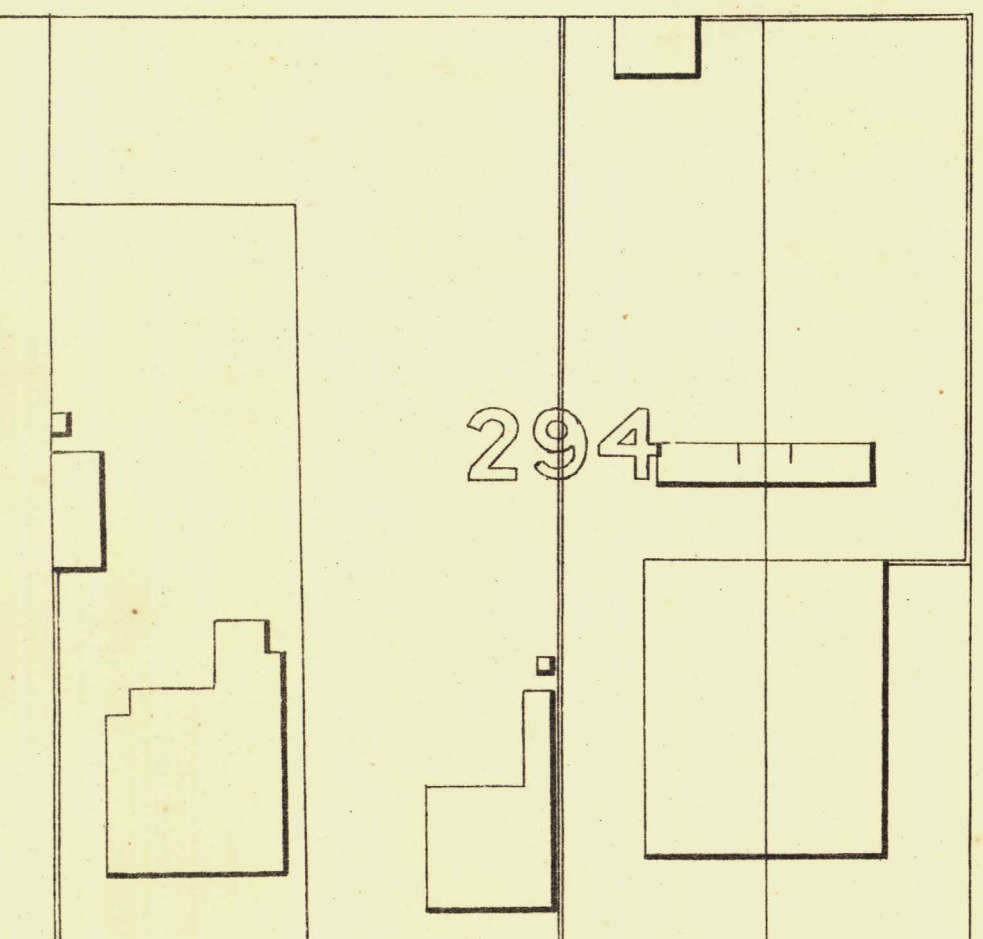
S T
A N D
A



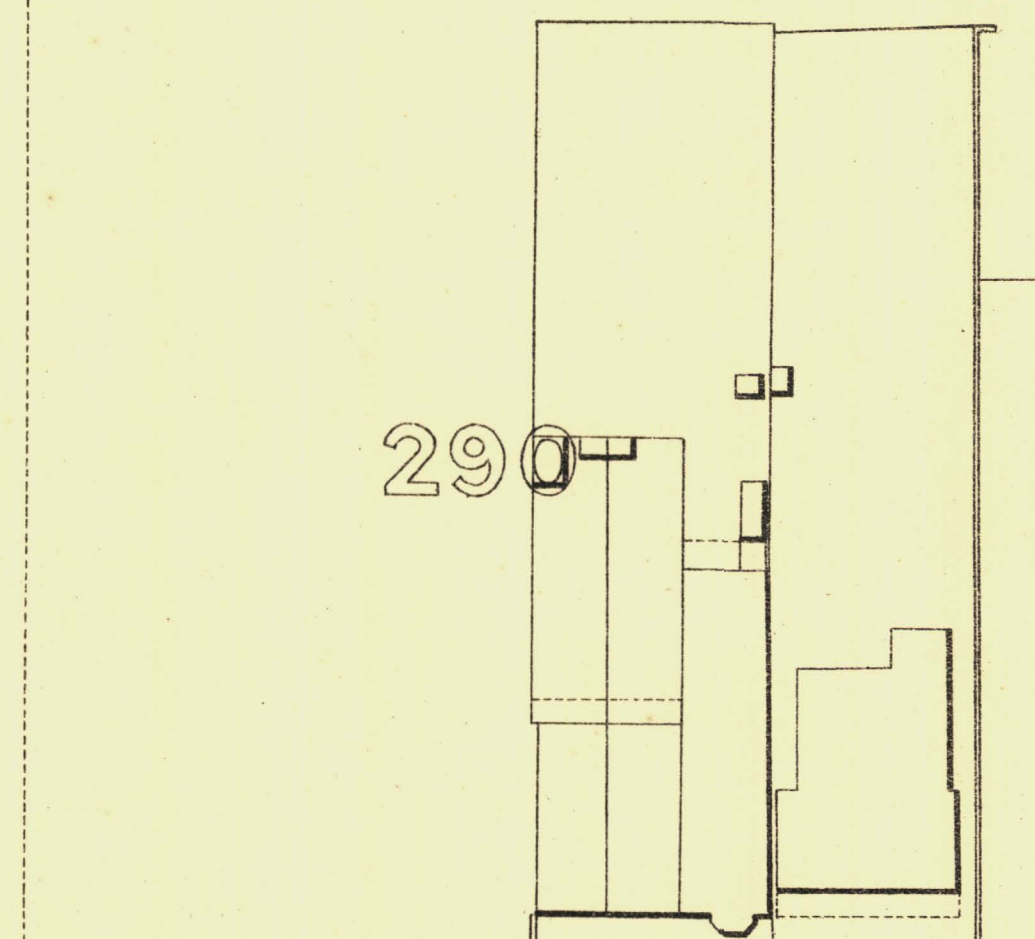
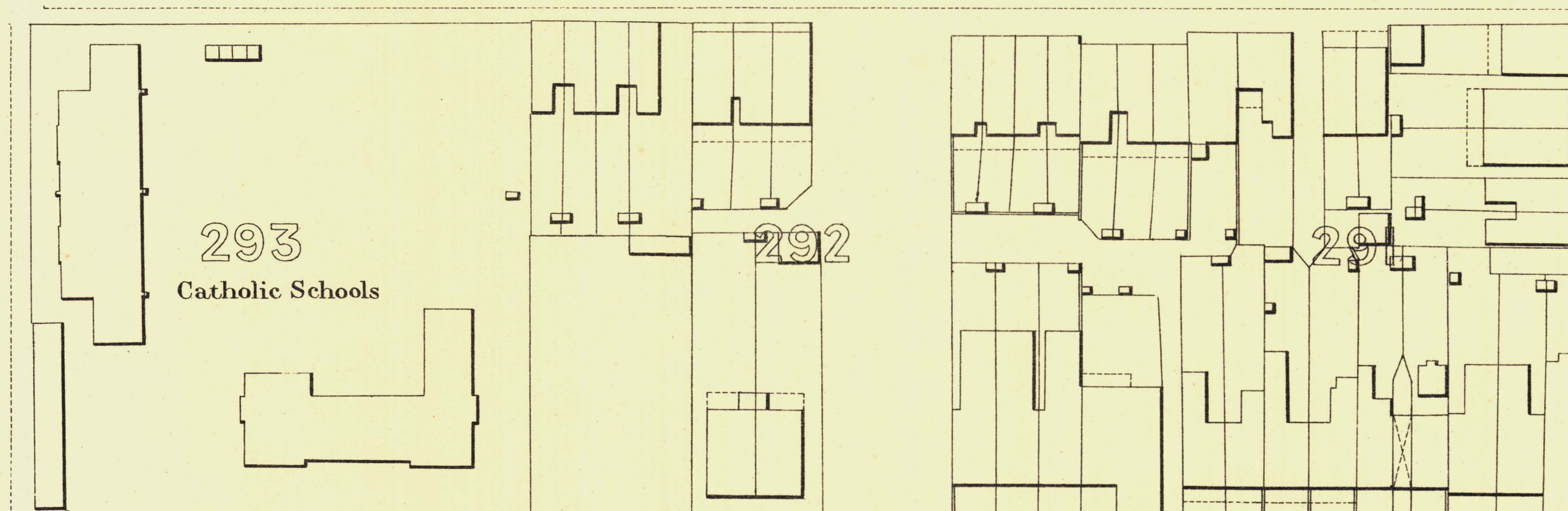
I F O U L D S T R E T



S T
A N D
A



S T
A N D
A



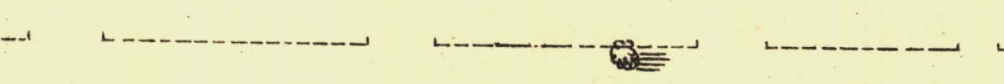
S T
A N D
A

263 · 84

W A K E F I E L D

S T

268 · 40



L. Smith Mayor

Thomas Worsnop Town Clerk

Scale Forty Feet to One Inch = 1/480

Scale Forty Feet to One Inch = 1/480

SURVEYOR GENERAL'S OFFICE, ADELAIDE. Drawn & Engraved, Photo-lithographed.

REFERENCE

Town Acres shown thus - [diagonal lines]	Fire Flays shown thus - [dotted line]	c.F.P.
Stone Buildings - [solid line]	Stop-cocks - [circle]	s.C.
Brick do - [dashed line]	Stand-pipes - [square]	s.S.P.
Wood and Iron do - [cross-hatch]	Lamp-posts - [circle]	s.L.P.
Pillar Post-offices - [circle]	Telegraph-posts - [square]	s.T.P.
Levels - [dotted line]	229·31 Datum 100 Feet below Low-water at Port Adelaide.	

Charles W. Smith
City Engineer
Licensed Surveyor R.P.A.