

SOUTH ADELAIDE

Sheet N<sup>o</sup> 45

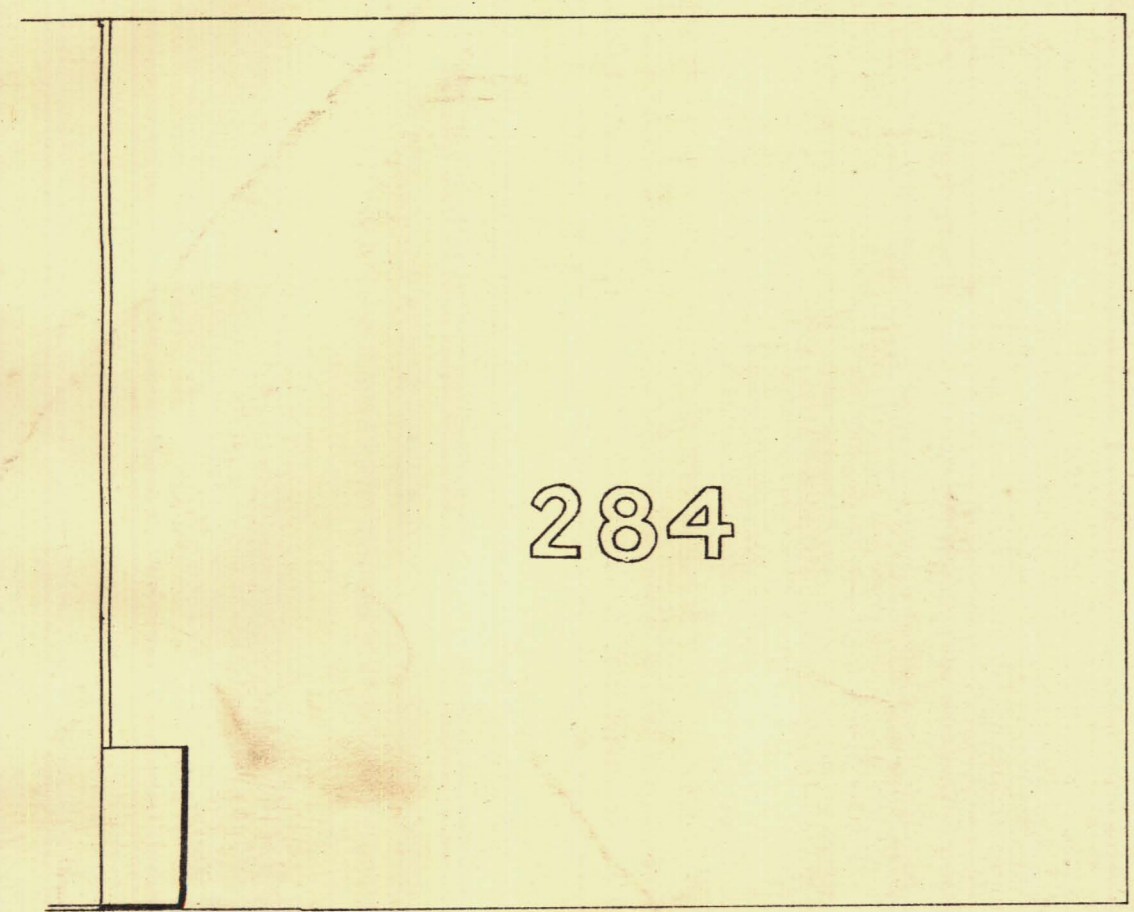
HINDMARSH WARD

KEY TO ADJOINING SHEETS

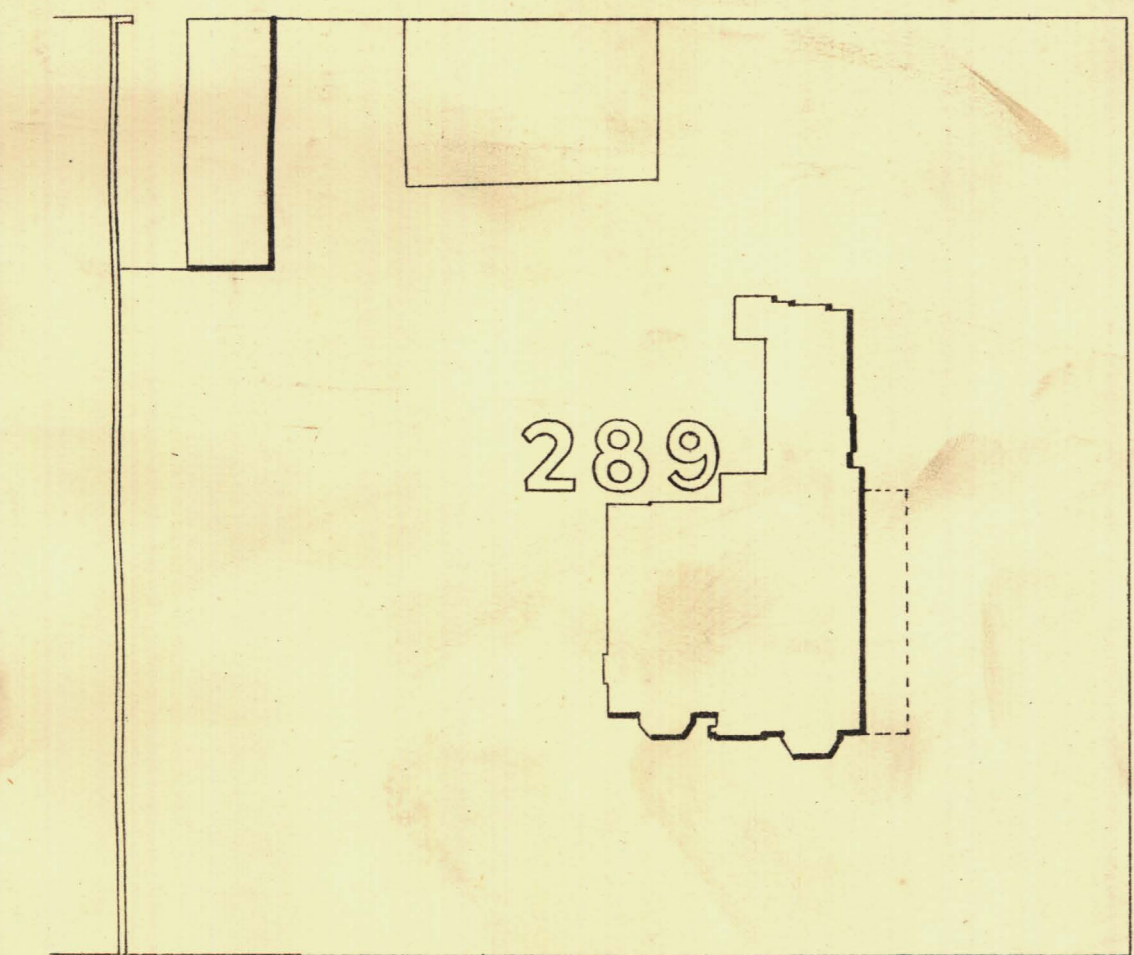
58	59	60
47	46	45
42	43	44



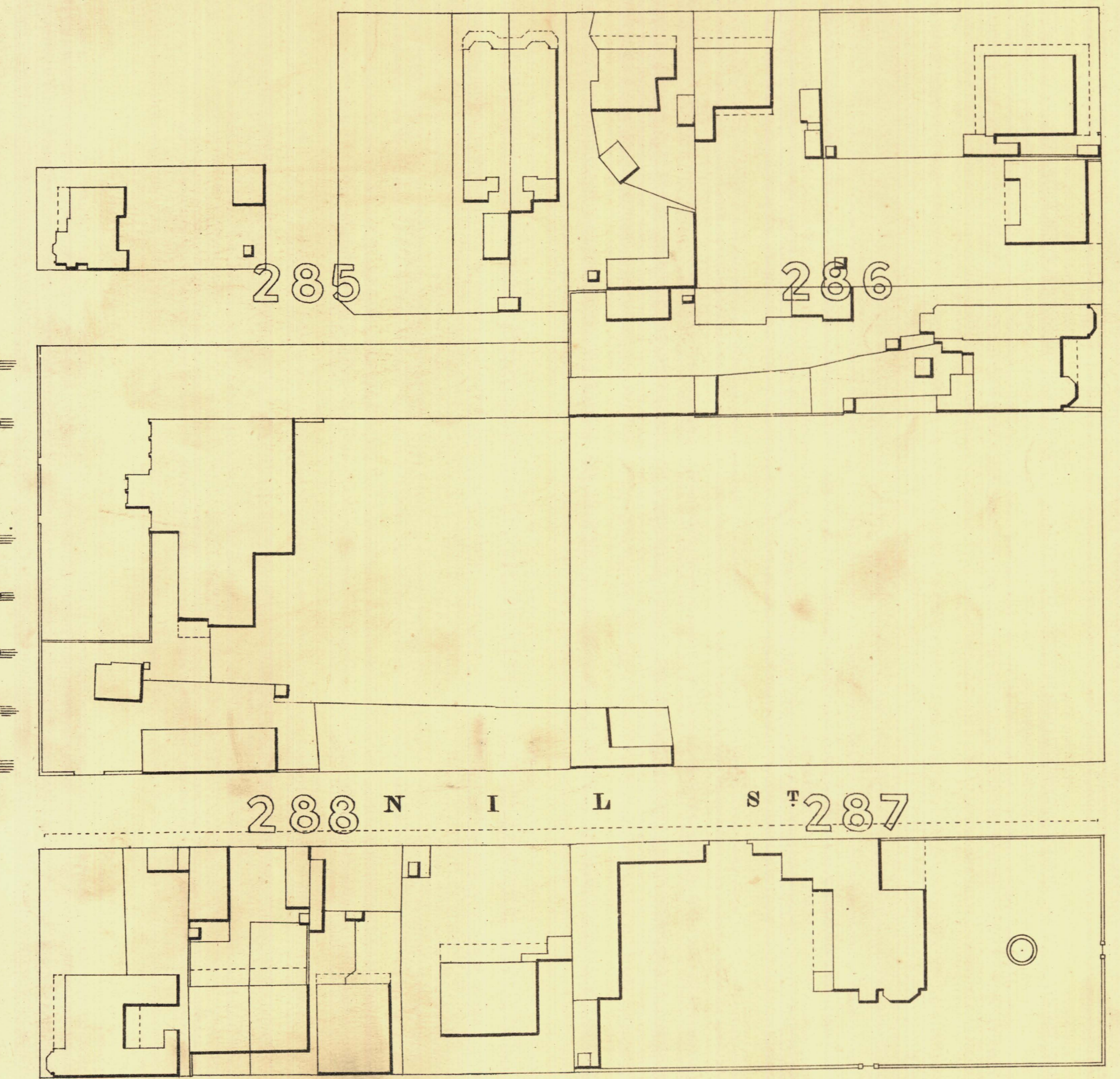
264-05 F L I N D 263-06 E R S S T 259-45



I F O U L D S T



263-61 T S T U H



288 N I L S T 287

R E T T S A E

P A R K L A N D S

268-40 W A K 268-07 E F I E L 267-21 D S T 265-83 265-29 260-47 258-58



*L. Smith* Mayor

Thomas Hornum Town Clerk

Scale Forty Feet to One Inch = 1/480

REFERENCE

Town Acres shown thus	□	Fire Plugs shown thus	□
Street Buildings	▤	Stop-cocks	○
Irish do	▥	Stand-pipes	○
Wood and Iron do	▧	Lamp-posts	○
Pillar Post-offices	○	Telegraph posts	○
Levels	—	Datum, 100 Feet below Low water at Port Adelaide	—

*Charles W. Smith*  
City Engineer  
Licensed Surveyor R.P.A.