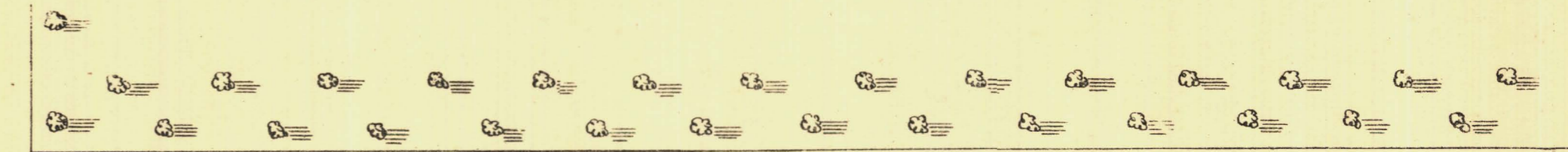
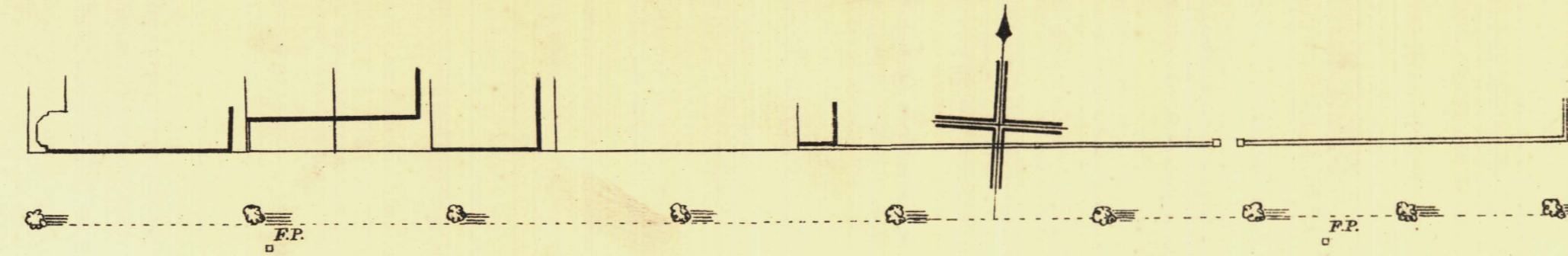
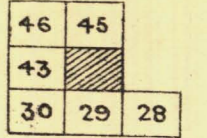


SOUTH ADELAIDE

Sheet N<sup>o</sup> 44.

YOUNG WARD

KEY TO ADJOINING SHEETS



268-40

268-07 W

A K E F I E L D

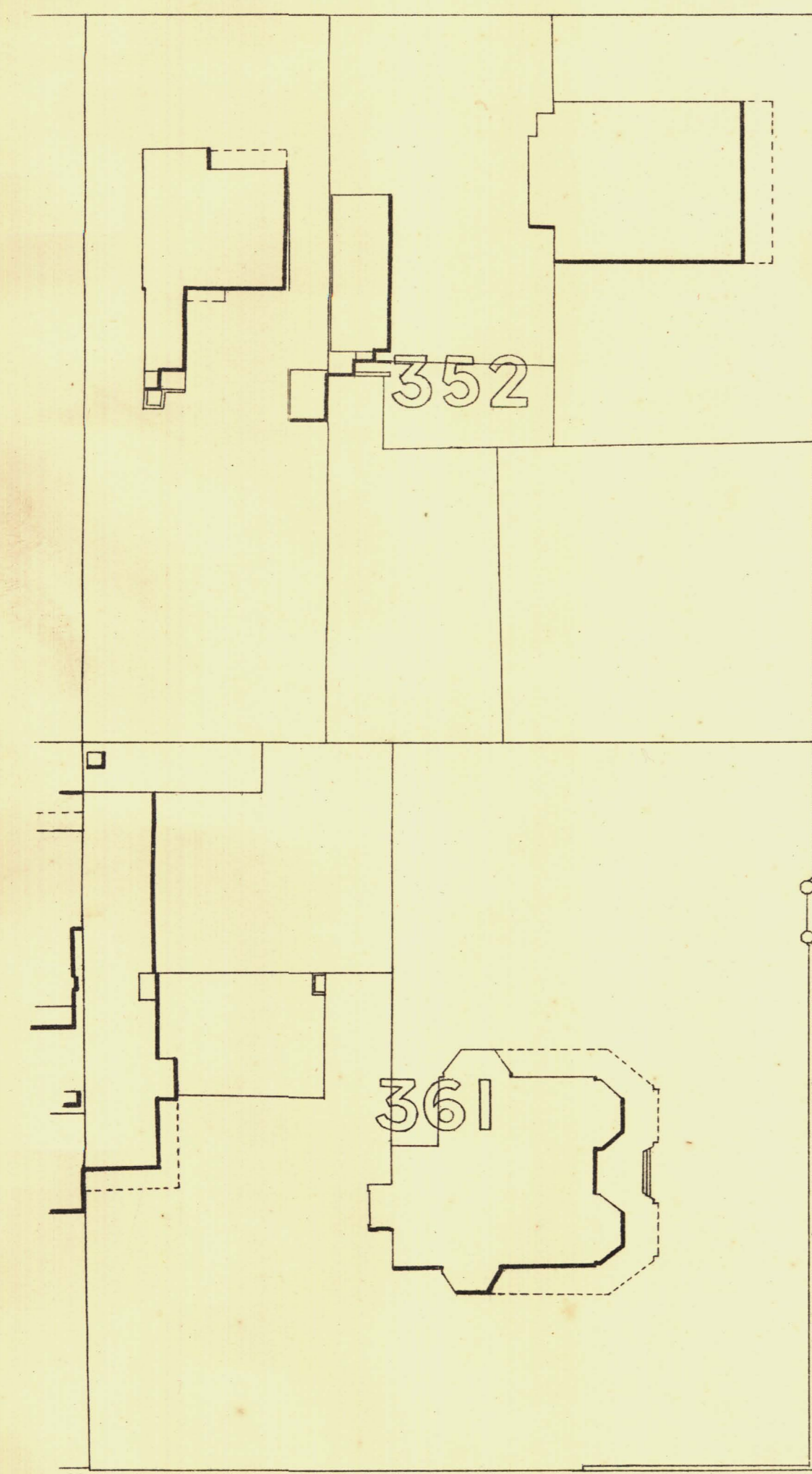
267-21

265-29 S

T

260-47

258-58



L.P.P.O.

T

268-95

S

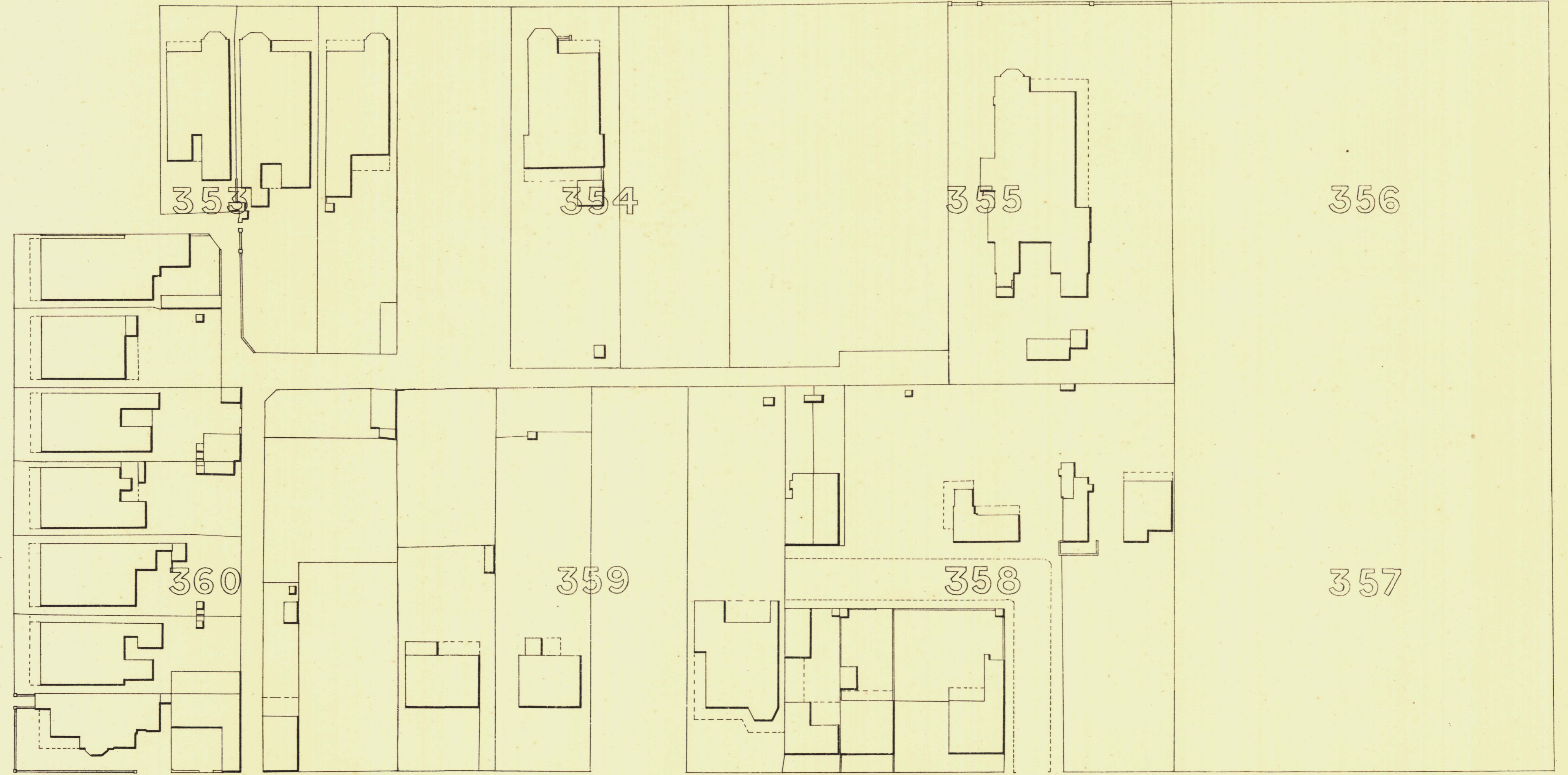
T

T

U

H

270-49



S.C.

R

E

T

T

S

A

E

269-73

A

N

271-20 G

A

S

272-55 S

T

R

E

E

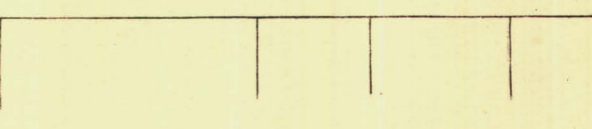
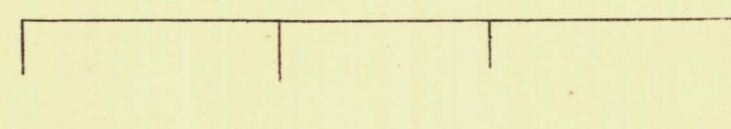
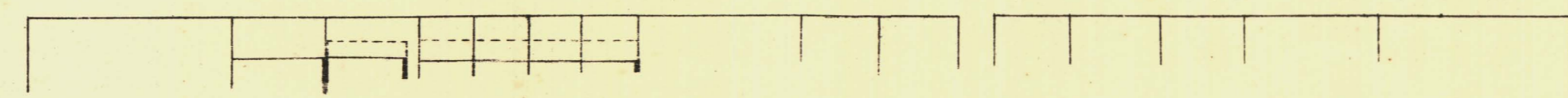
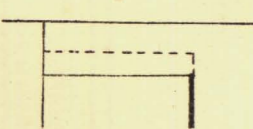
271-06 T

FP S.C.

FP

FP

FP



*T. Smith* Mayor

*Thomas Wortrup* Town Clerk

100 Feet 50 0 200 300 Feet.

Scale Forty Feet to One Inch

SURVEYOR GENERAL'S OFFICE, ADELAIDE. Drawn & Checked. Photo-lithographed.

REFERENCE

- Town Acres shown this
- Stone Buildings
- Brick do
- Wood and Iron do
- Pillar Post-offices
- Levels
- Fire Places shown thus
- Step-walks
- Stand-pipes
- Lamp-posts
- Telegraph posts
- Datum 100 Feet below Low-water at Port Adelaide.

*Charles W. Smith*

City Engineer Licensed Surveyor R.P.A.