

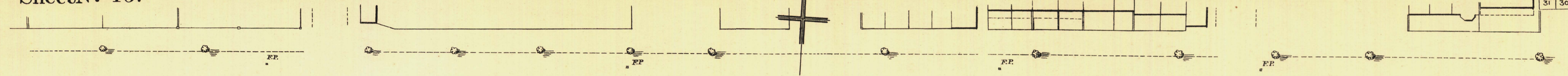
SOUTH ADELAIDE

YOUNG WARD

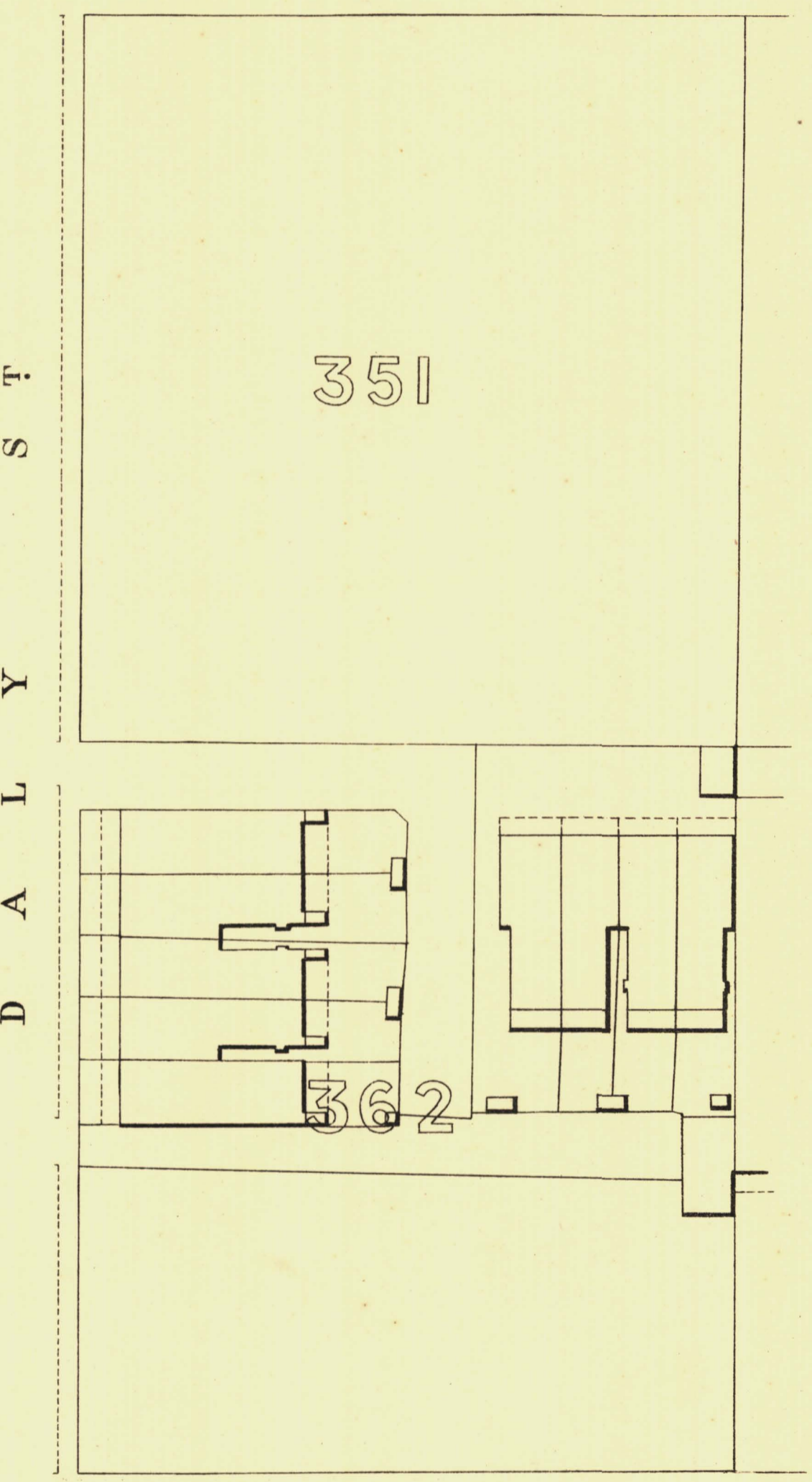
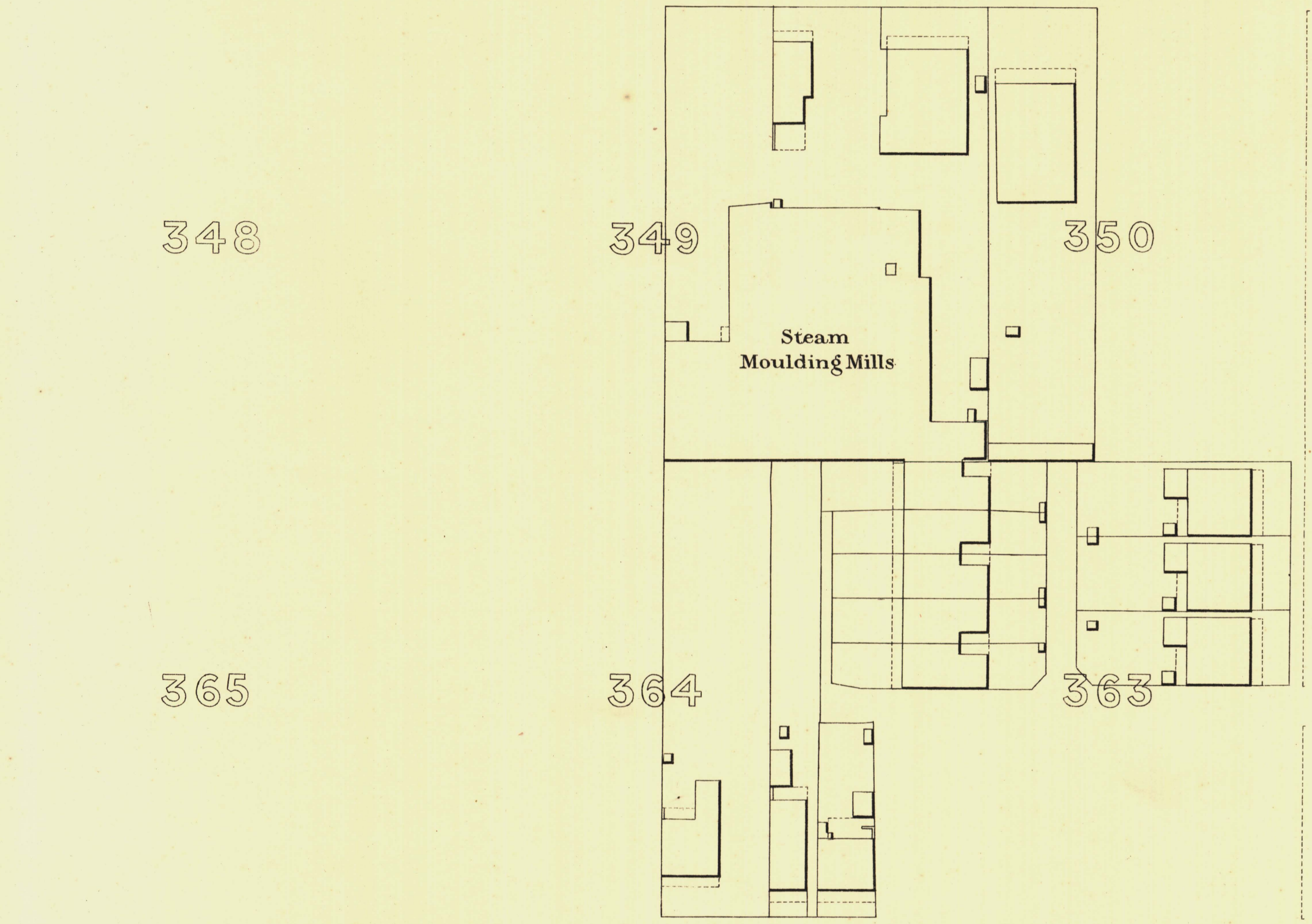
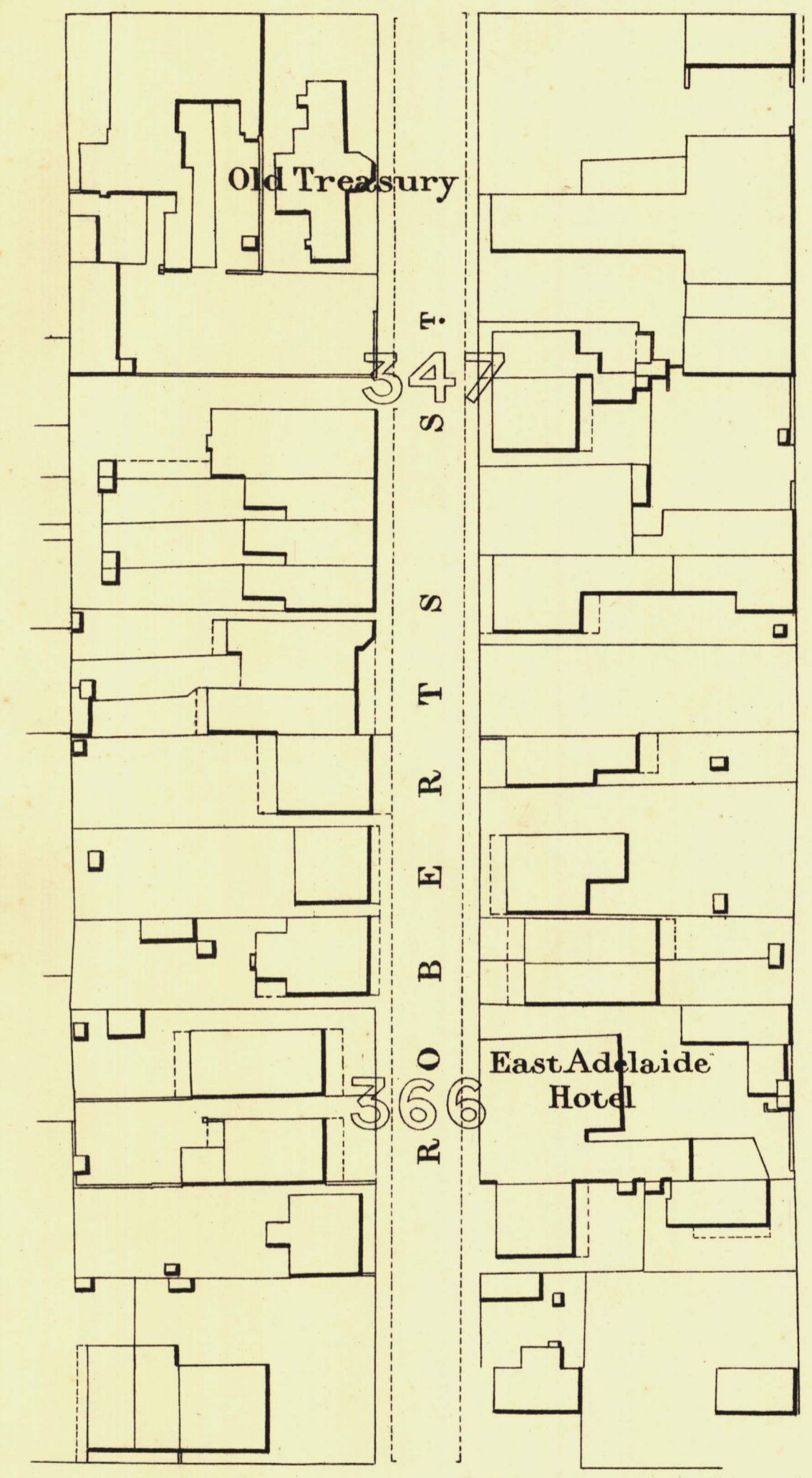
KEY TO ADJOINING SHEETS

Sheet No 43.

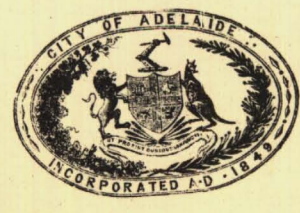
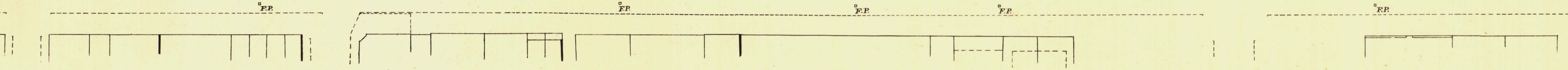
47	46	45
42	44	
31	30	29



263-84 W A K E 265-55 F I E L D 267-58 S T 268-40



A 264-20 N G A S 266-51 S T R E E T 269-73



T. Smith Mayor

Thomas Wort Town Clerk

100 Feet 50 200 300 Feet

Scale Forty Feet to One Inch

SURVEYOR GENERAL'S OFFICE, ADELAIDE, Printer & Engraver, Photo-lithographer.

REFERENCE

Town Acres shown thus	— [Symbol] —	Fire Plugs shown thus	— [Symbol] —
Stone Buildings	— [Symbol] —	Stop-cocks	— [Symbol] —
Brick do	— [Symbol] —	Stand pipes	— [Symbol] —
Wood and Iron do	— [Symbol] —	Lamp-posts	— [Symbol] —
Pillar Post offices	— [Symbol] —	Telegraph posts	— [Symbol] —
Levels	— [Symbol] —	Datum 100 Feet below Low-water at Port Adelaide.	

Walter W. Smith
City Engineer
Licensed Surveyor R.P.A.