

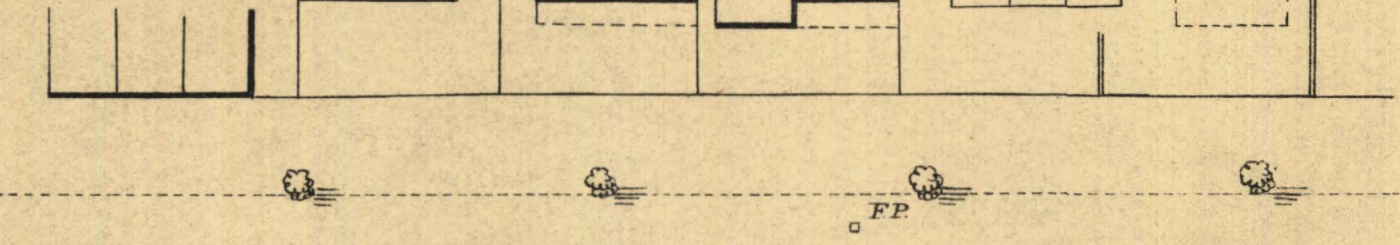
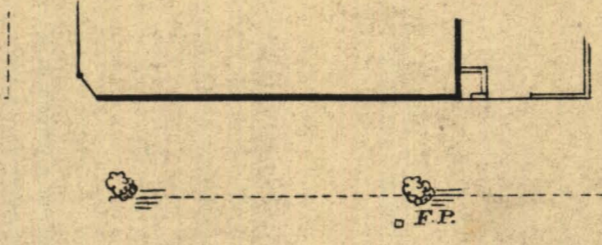
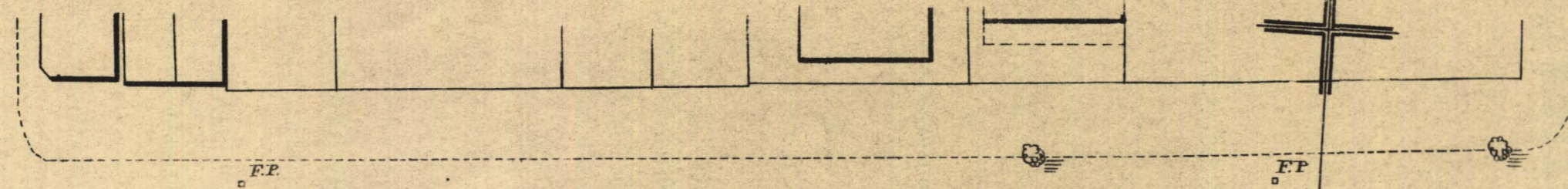
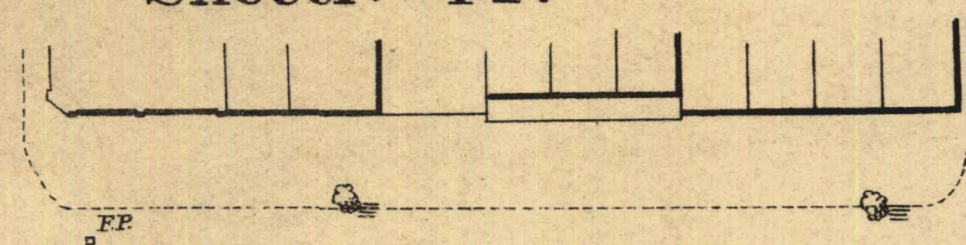
SOUTH ADELAIDE

YOUNG WARD

KEY TO ADJOINING SHEETS

Sheet No 42.

48	47	46
41		43
32	31	30

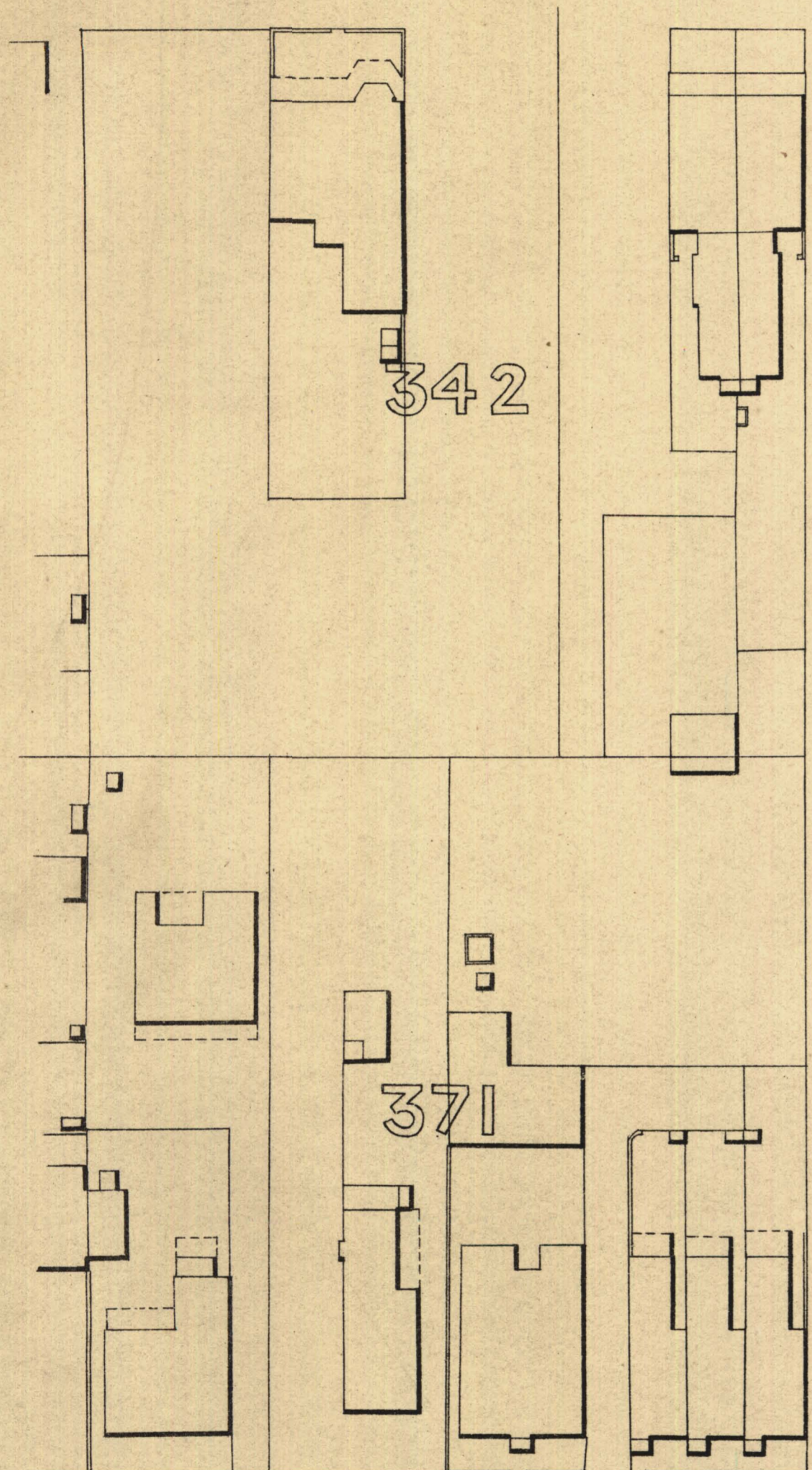


255.68

W A K E F I E L D

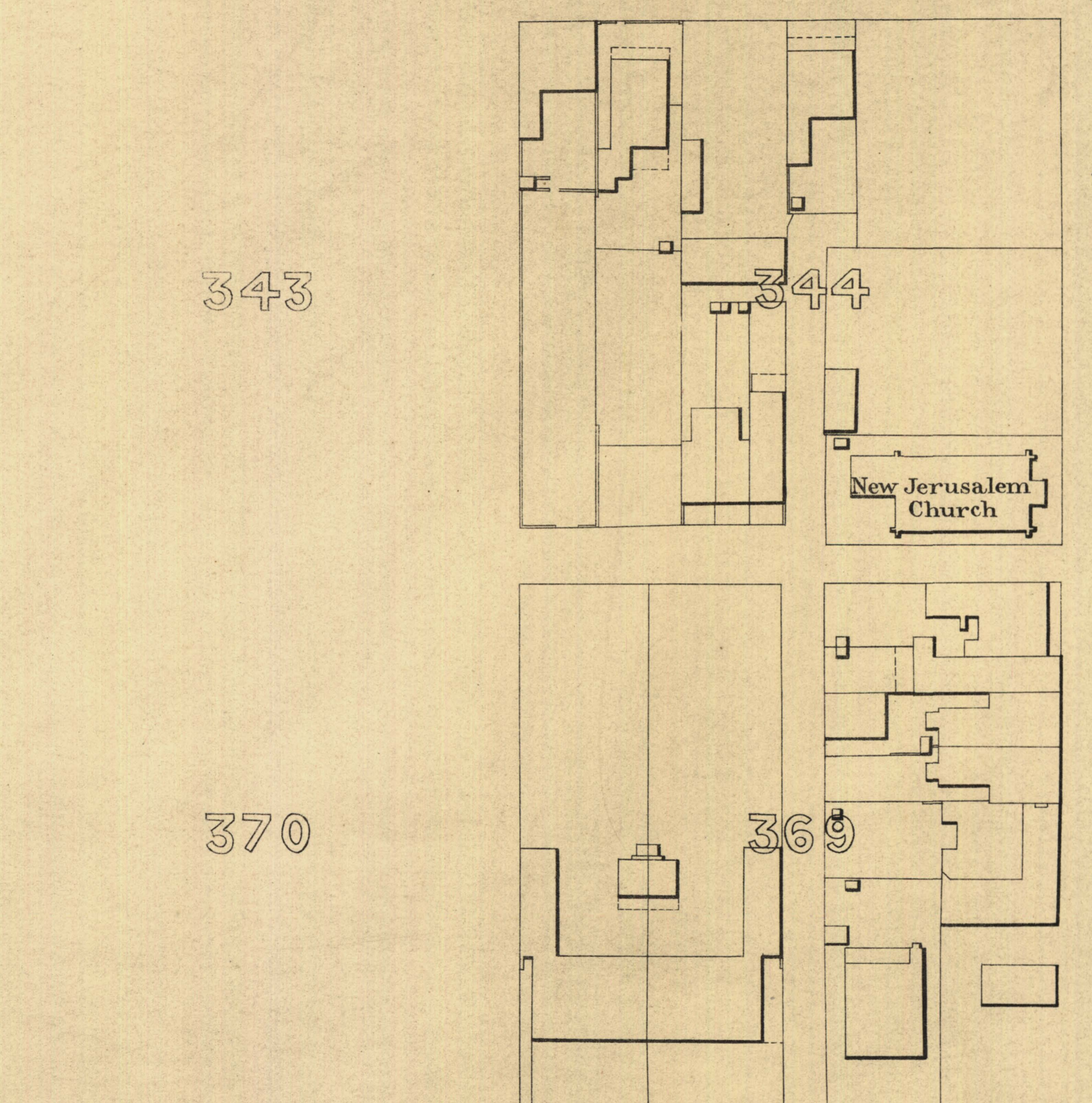
S T

262.48



342

371



343

344

370

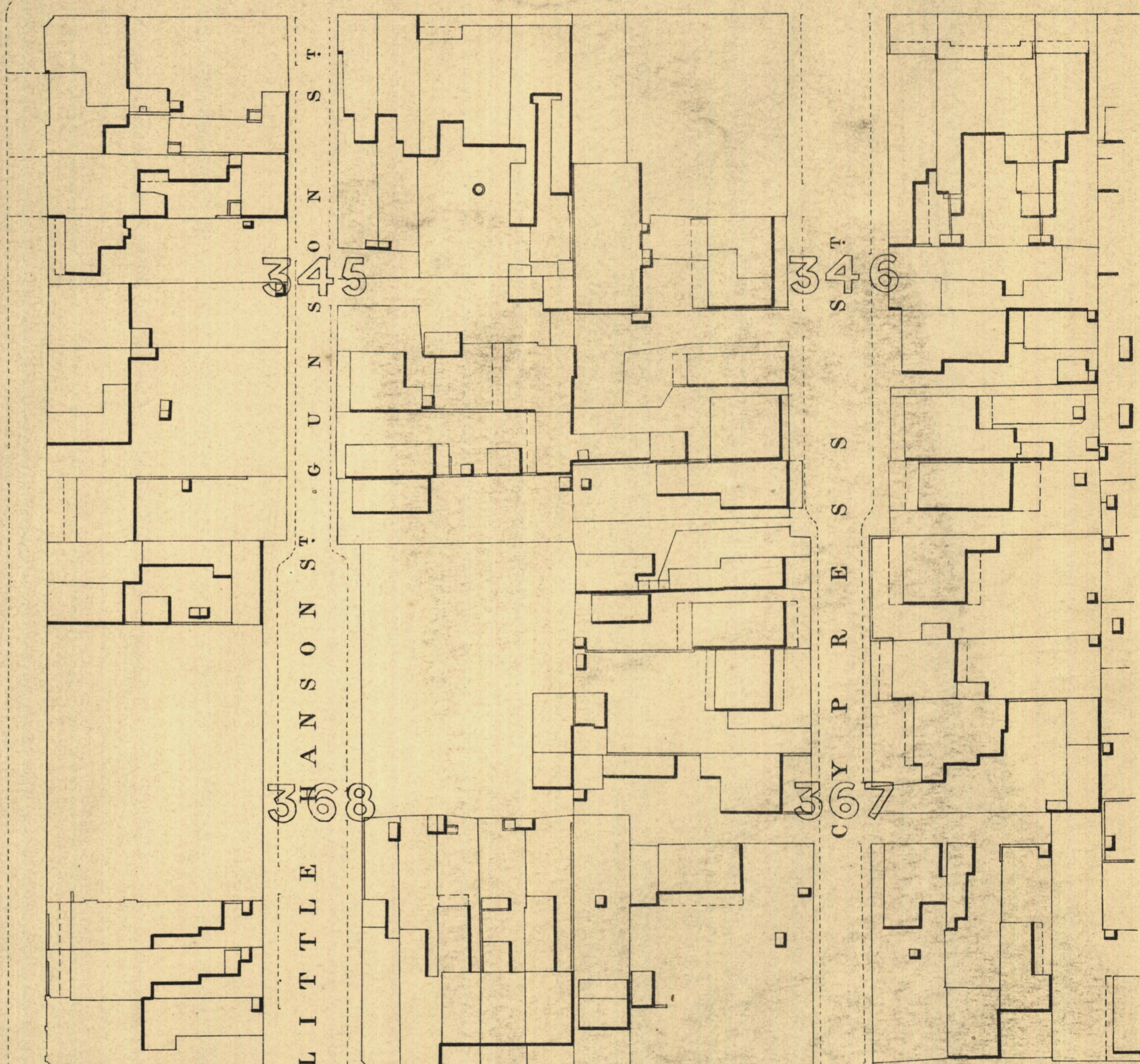
369

New Jerusalem Church

S T
H A N S O N

261.01

261.63



345

368

346

367

L I T T L E
G U N N S T
C Y P R E S S

256.70

A N G A S

259.77

S T R E E T

261.53

263.08



T. Smith
Mayor

Thomas W. Smith
Town Clerk

100 Feet 50 0 200 300 Feet.

Scale Forty Feet to One Inch

SURVEY GENERAL'S OFFICE, ADELAIDE, From S. Grainger's Photo-lithograph.

REFERENCE

Town Acres shown thus	—	Fire Plugs shown thus	FP
Stone Buildings	—	Stop-cocks	S.C.
Brick do	—	Stand-pipes	S.P.
Wood and Iron do	—	Lamp-posts	L.P.
Pillar Post-offices	—	Telegraph-posts	T.P.
Levels	—	229/31 Datum 100 Feet below Low-water at Port Adelaide.	

Charles W. Smith
City Engineer
Licensed Surveyor R.P.A.