

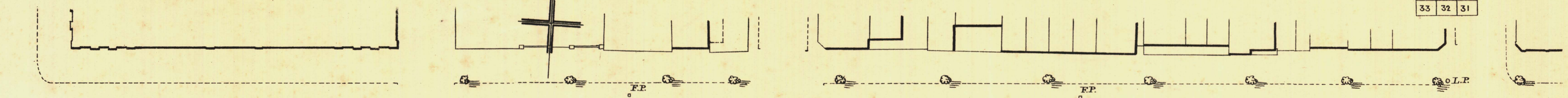
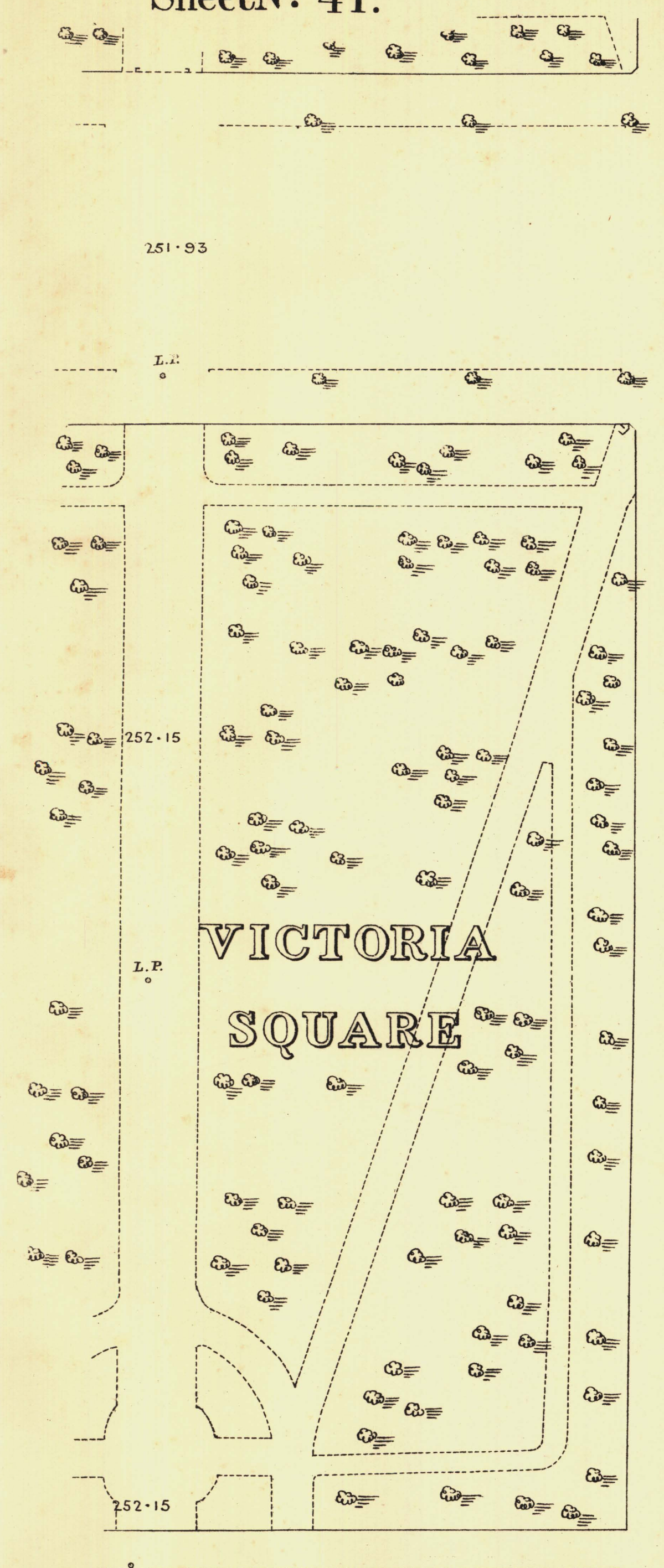
SOUTH ADELAIDE

YOUNG WARD

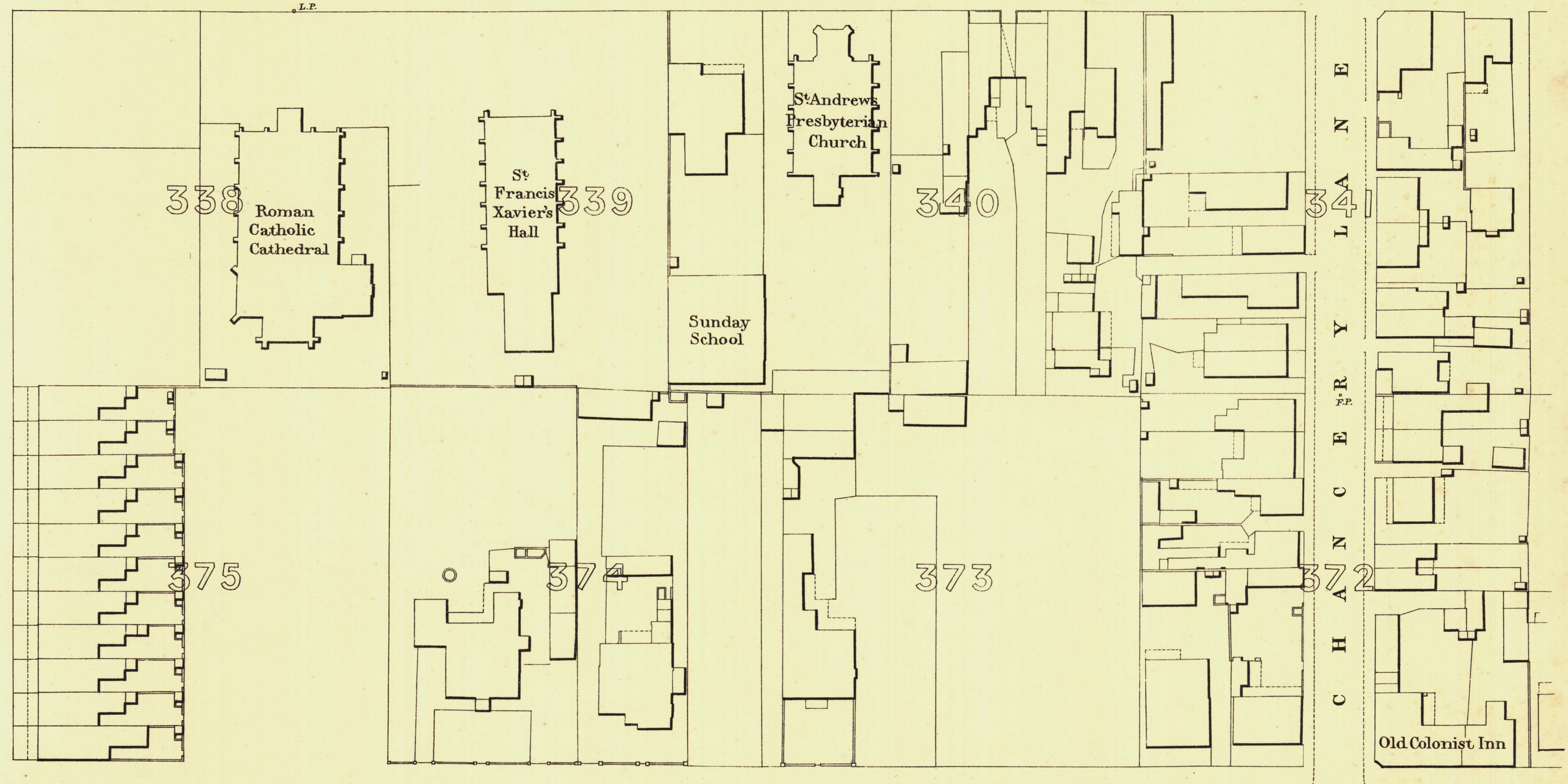
KEY TO ADJOINING SHEETS

Sheet N° 41.

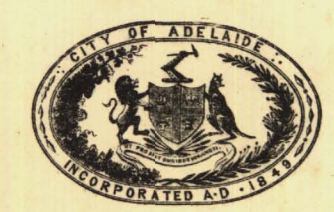
49	48	47
40		42
33	32	31



WAKEFIELD STREET



ANGASTREET



L. Smith
Mayor

Thomas Wortrup
Town Clerk

100 Feet 50 0 200 300 Feet

Scale Forty Feet to One Inch

SURVEYOR GENERAL'S OFFICE, ADELAIDE. From S. Hoare's Photolithograph.

REFERENCE

Town Acres shown thus	□	Fire Flugs shown thus	□
Stone Buildings	□	Stop-cocks	○
Brick do	□	Stand-pipes	○
Wood and Iron do	□	Lamp-posts	○
Filler Post-offices	○	Telegraph-posts	○
Levels	—	225-31 Datum 100 Feet below Low-water at Port Adelaide.	

Charles W. Smith
City Engineer
Licensed Surveyor R.P.A.