

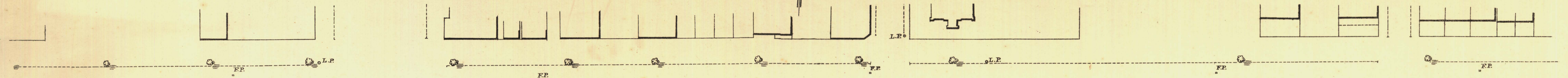
SOUTH ADELAIDE

Sheet N^o 39

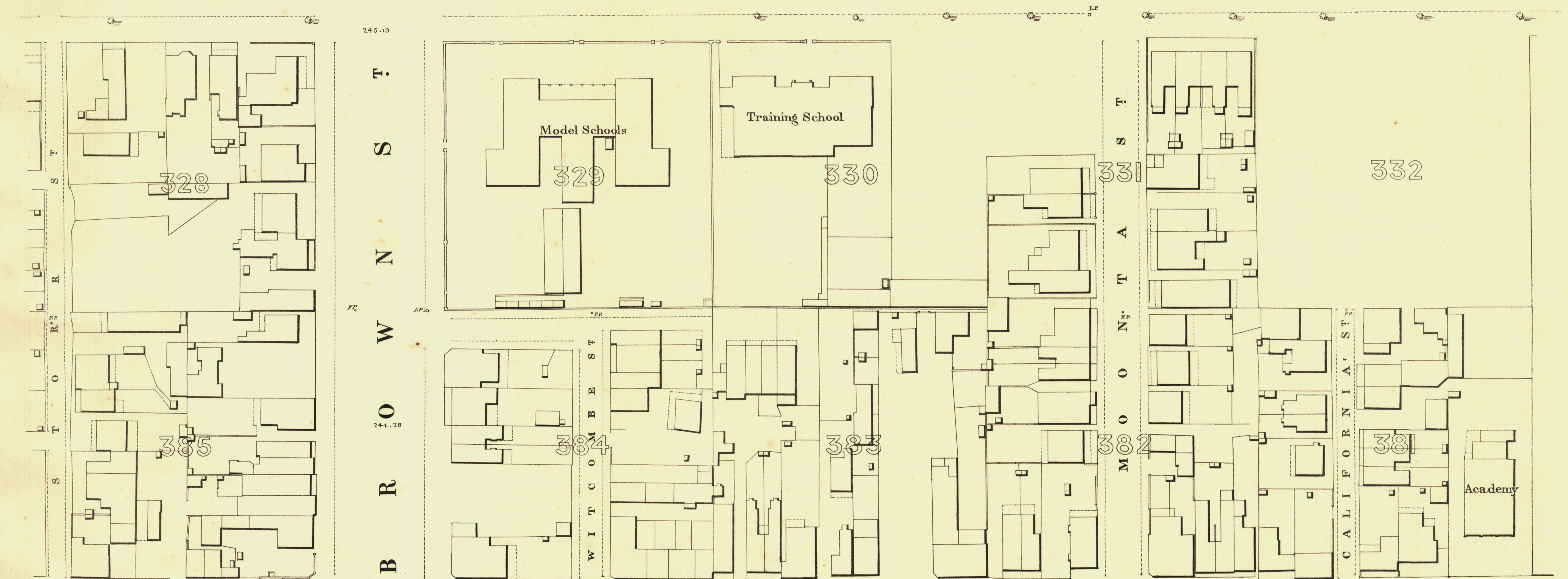
GREY WARD

KEY TO ADJOINING SHEETS

51	50	49
38	39	40
35	34	33

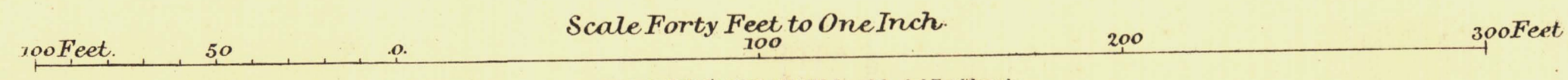


G R O T E S T R E E T



G O U G E R S T R E E T

L. Smith Mayor
Thomas W. Smith Town Clerk



Scale Forty Feet to One Inch

REFERENCE

Town Acres shown thus	1/4	Fire Plugs shown thus	FP
Stone Buildings	—	Stop-cocks	SC
Brick do	—	Stand-pipes	SP
Wood and Iron do	—	Lamp-posts	LP
Pillar Post-offices	PO	Telegraph-posts	TP
Levels	229-31	Datum 100 Feet below Low-water at Port Adelaide.	

W. W. Smith
 City Engineer
 Licensed Surveyor R.P.A.