

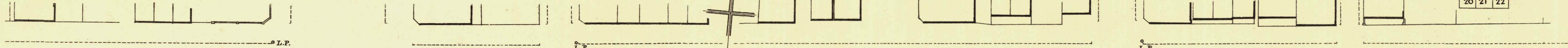
SOUTH ADELAIDE

GREY WARD

KEY TO ADJOINING SHEETS

Sheet N^o 34.

38	39	40
35	33	
20	21	22



244-06

G O

U

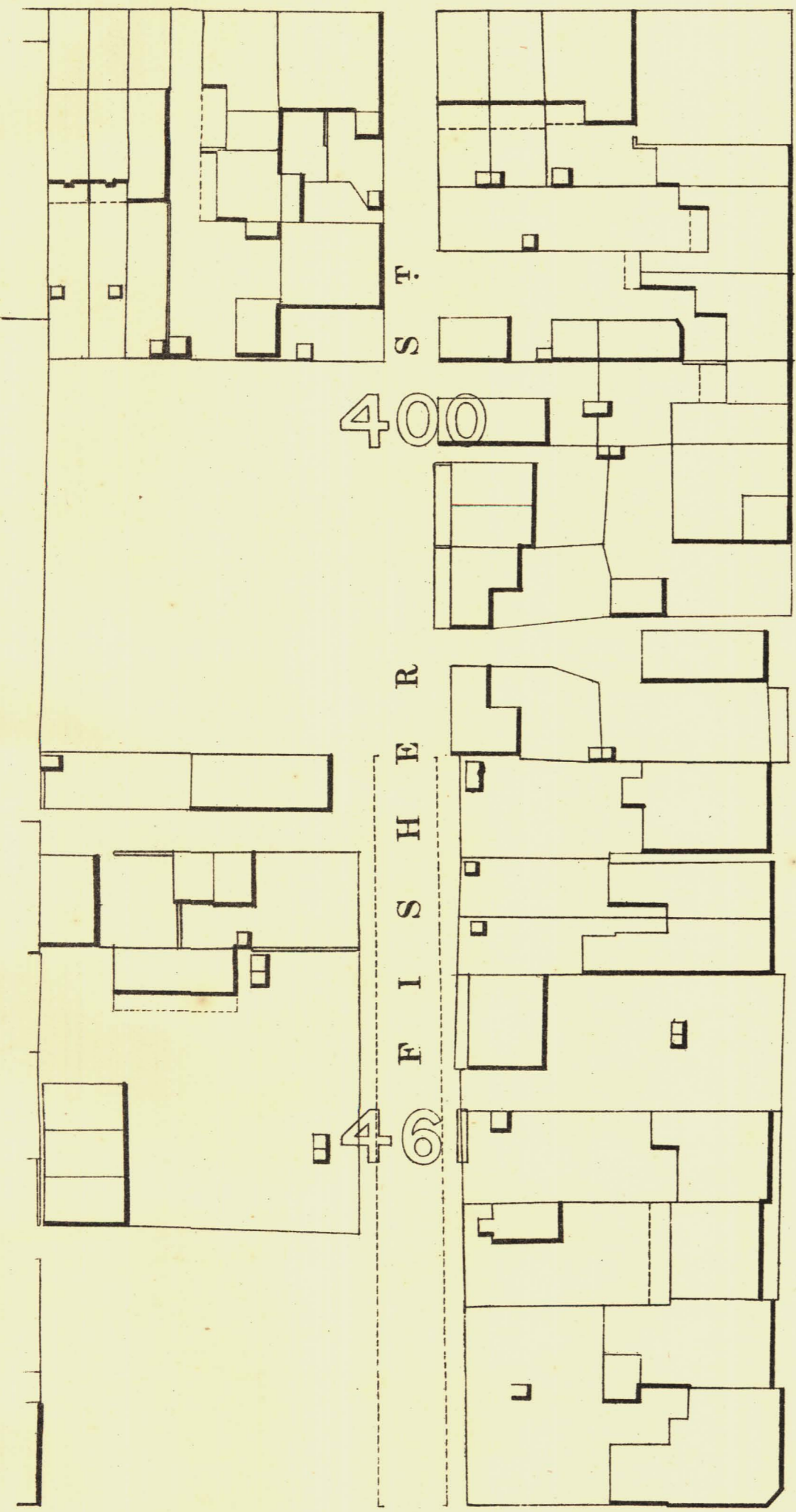
G 244-13

E R

244-24

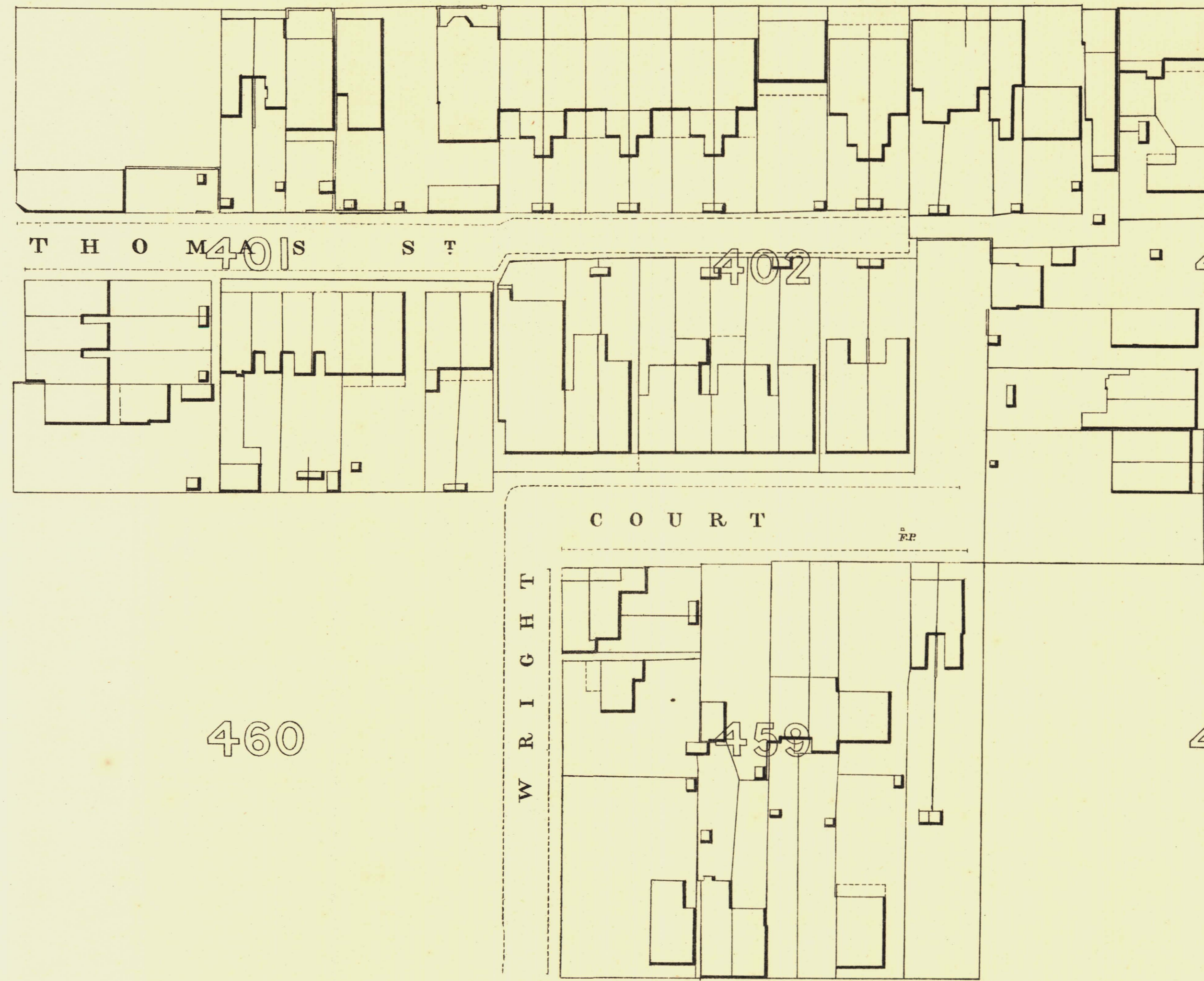
S T R

E E T 246-16



B R O W N S T

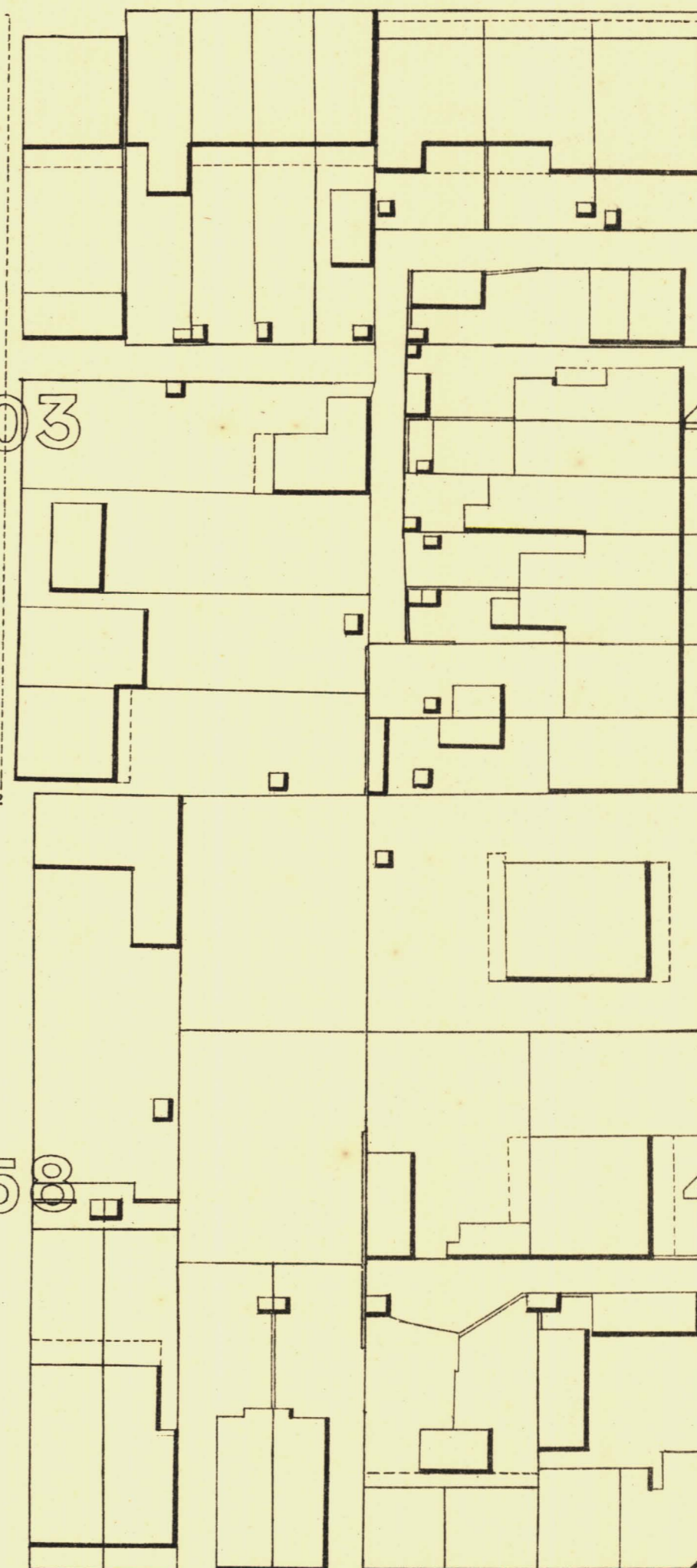
243-63



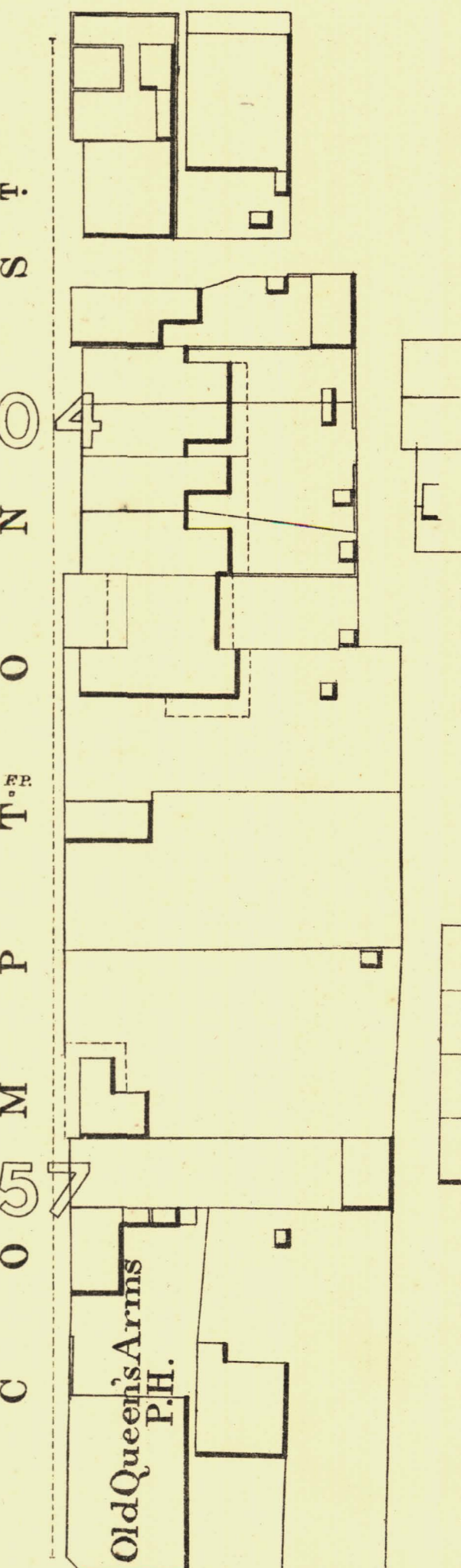
T H O M A S S T

C O U R T

W R I G H T



L I N D S A Y S T



C O M P T O N S T

Old Queen's Arms P.H.

242-04

W R I G H T 242-89

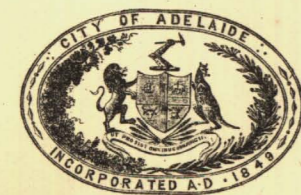
S T R E E T 244-03

S T R E E T 245-95

S T R E E T 247-68



Whitmore Square



L. Smith
Mayor

Thomas Brown
Town Clerk

100 Feet 50 0 200 300 Feet

Scale Forty Feet to One Inch

SURVEYOR GENERAL'S OFFICE ADELAIDE. From S. Greenfield's Photodisgrapher.

REFERENCE

Town Acres shown thus	1/4	Fire Plugs shown thus	□ F.P.
Stone Buildings	▭	Stop-cocks	○ S.C.
Brick do	▭	Stand-pipes	○ S.P.
Wood and iron do	▭	Lamp-posts	○ L.P.
Filler Post offices	○ F.P.O.	Telegraph posts	○ T.P.
Levels	229-51	Distans. 100 Feet below Low Water at Port Adelaide.	

Charles W. Smith
City Engineer
Licensed Surveyor R.F.A.