

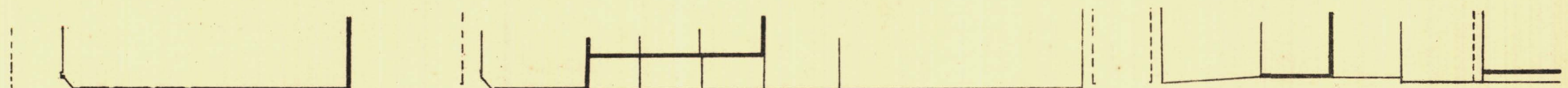
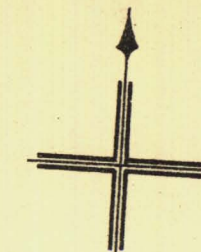
SOUTH ADELAIDE

YOUNG WARD

KEY TO ADJOINING SHEETS

Sheet N^o 31.

41	42	43
32	30	
23	24	25



256.70

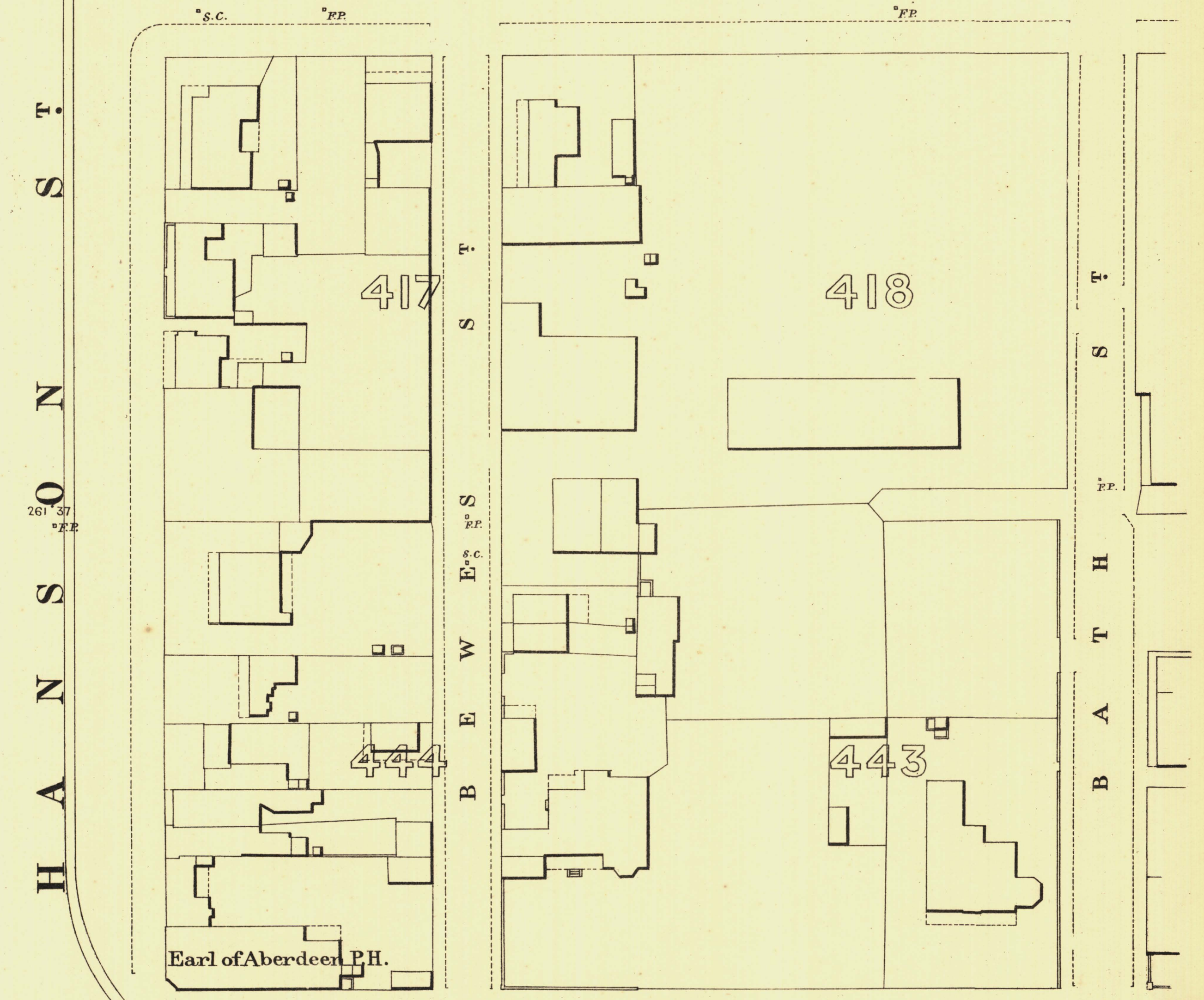
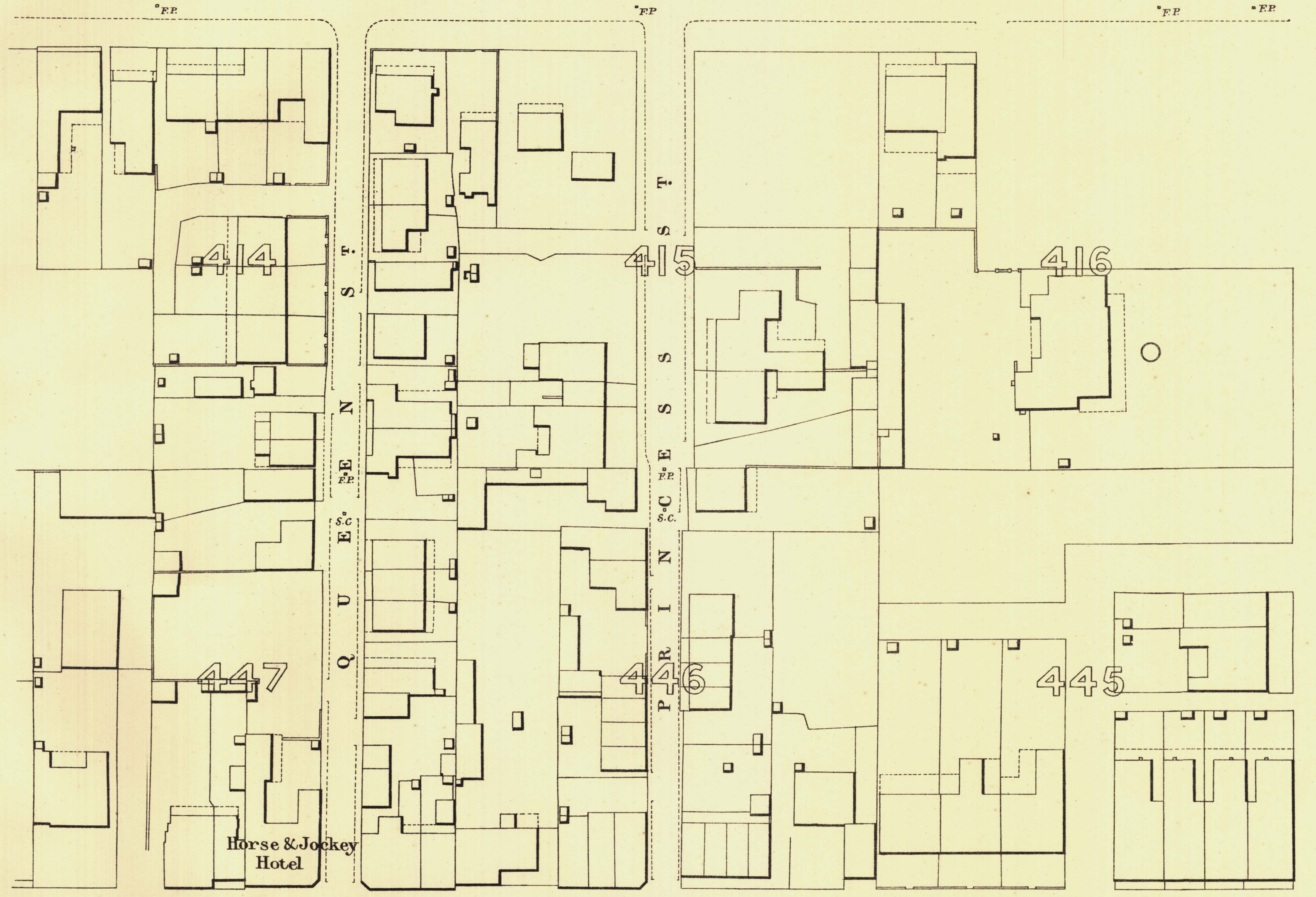
A N G A S

259.77

261.53

R E E T

263.08



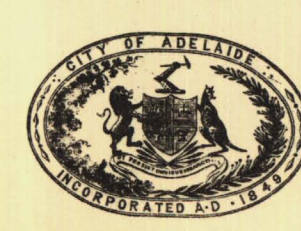
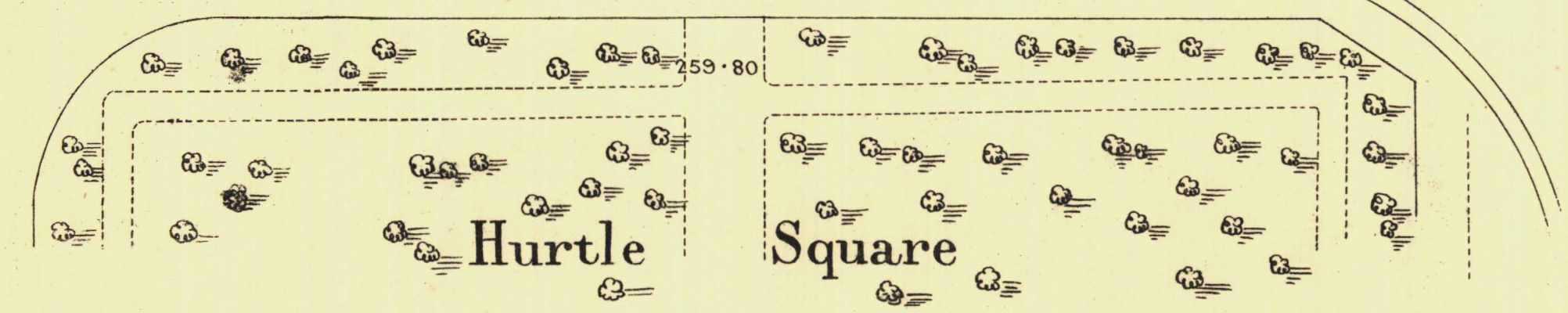
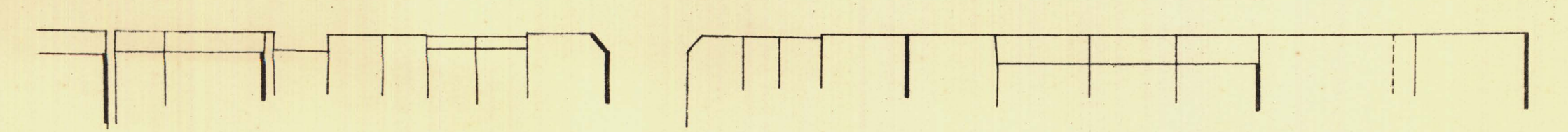
254.79

C A R R I N G

259.40

H A N S O N S T

262.43



T. Smith Mayor

Thomas Hornum Town Clerk

100 Feet 50 0 200 300 Feet.

Scale Forty Feet to One Inch

SURVEYOR GENERAL'S OFFICE ADELAIDE, From S. Crawford, Photodupographer.

REFERENCE

Town Acres shown thus	[Symbol]	Fire Plugs shown thus	[Symbol]
Stone Buildings	[Symbol]	Stop-cocks	[Symbol]
Brick do	[Symbol]	Stand-pipes	[Symbol]
Wood and Iron do	[Symbol]	Lamp-posts	[Symbol]
Public Post-offices	[Symbol]	Telegraph-posts	[Symbol]
Levels	[Symbol]	Datum 100 Feet below Low water at Port Adelaide.	[Symbol]

Charles W. Smith
City Engineer
Licensed Surveyor R.P.A.