

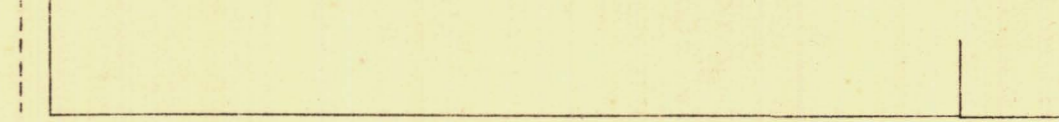
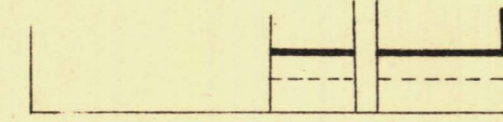
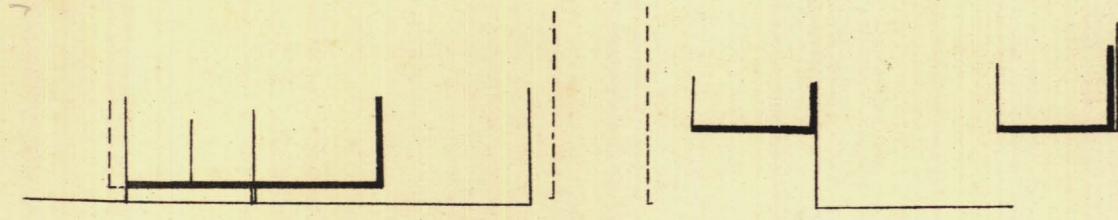
SOUTH ADELAIDE

Sheet No 30.

YOUNG WARD

KEY TO ADJOINING SHEETS

42	43	44
31	29	
24	25	26



263-08

A 264-20

N

G

A

S

266-51

S

T

R

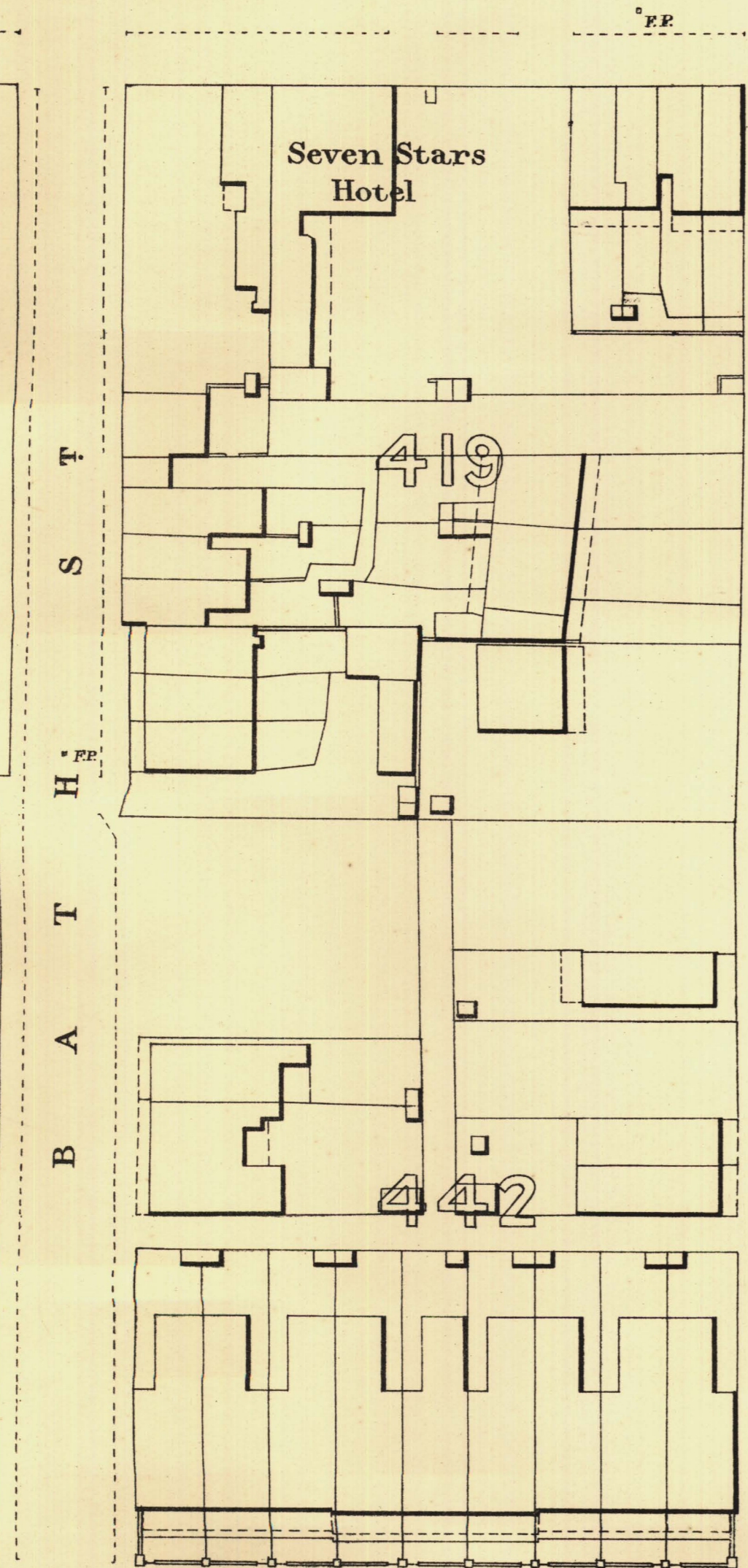
E

268-34

E

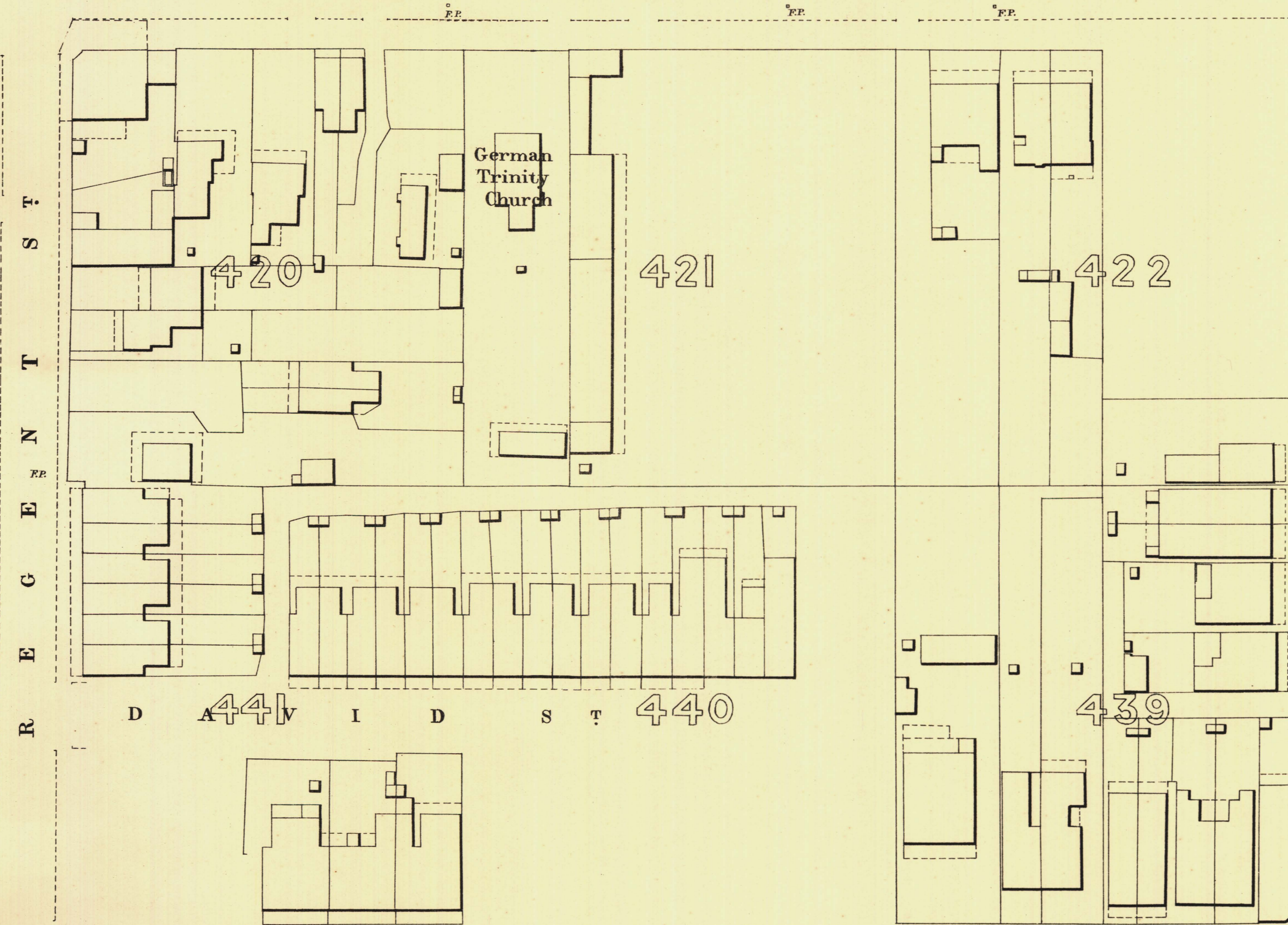
T

269-73



264-40

C



L.P.

266-38

F.P.

A

R

R

I

N

G

T

O

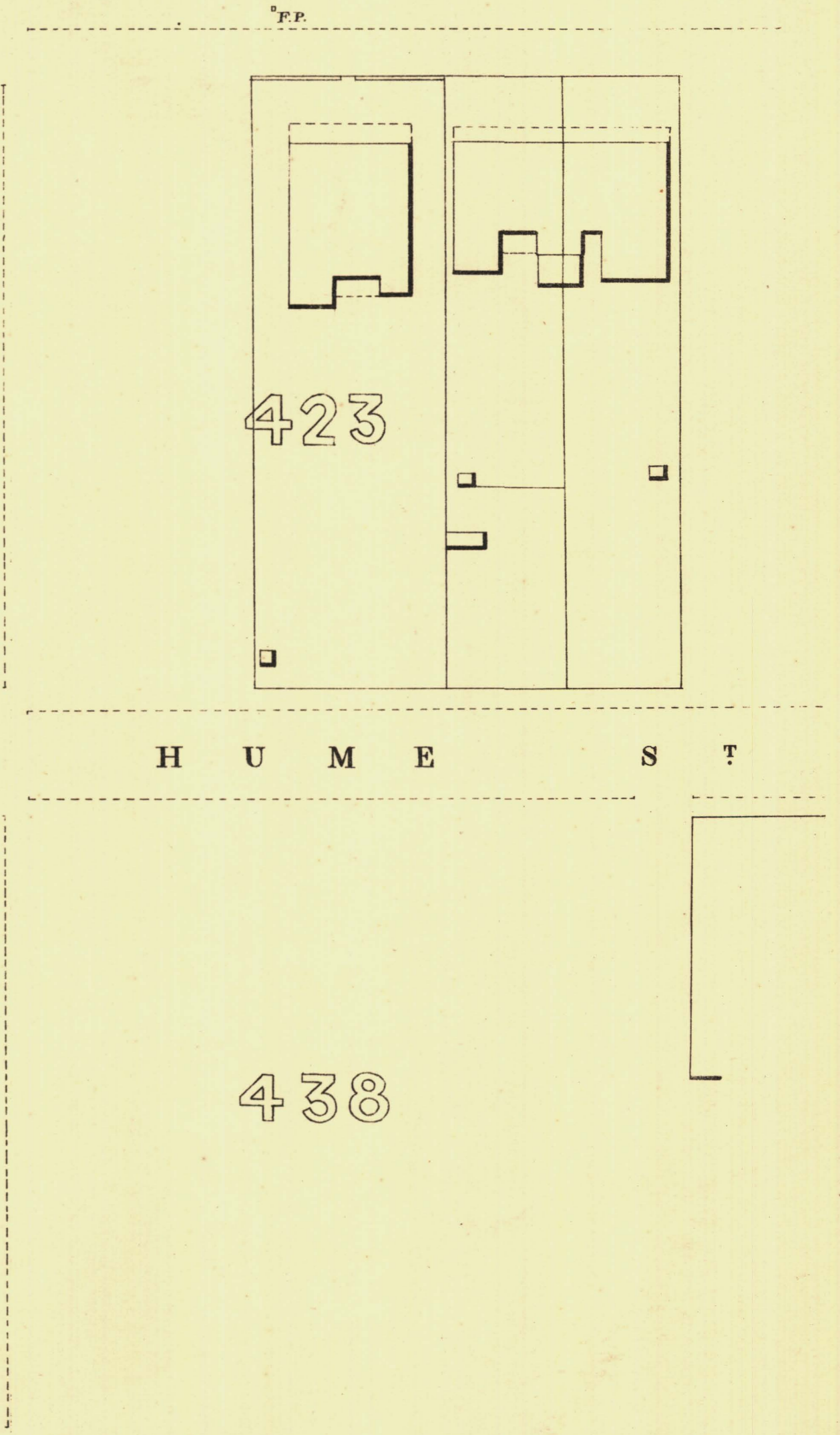
N

F.P.

268-22

F.P.

269-57



F.P.

S

T

L

L

E

E

S

T

C

A

R

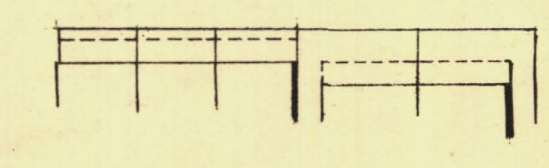
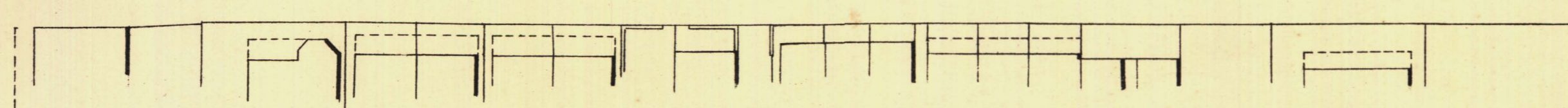
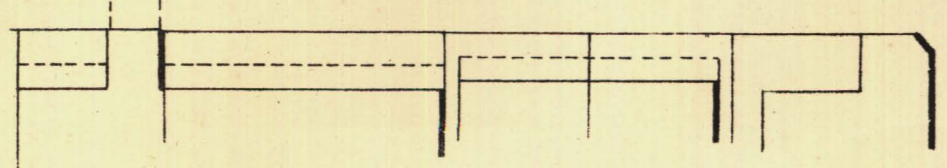
D

W

E

S

T



T. Smith Mayor

Thomas W. Smith Town Clerk

100 Feet 50 0 200 300 Feet.

Scale Forty Feet to One Inch

SURVEYOR GENERAL'S OFFICE, ADELAIDE. Drawn by S. G. G. Photo-lithographer.

REFERENCE

Town Acres shown thus	--- ---	Fire Plugs shown thus	---FP---
Stone Buildings	---[---]	Stop-cocks	---SC---
Brick do	---[---]	Stand-pipes	---SP---
Wood and Iron do	---[---]	Lamp-posts	---L.P---
Fillar-Post offices	---[---]	Telegraph posts	---T.P---
Levels	---[---]	Datum 100 Feet below Low water at Port Adelaide.	

Charles W. Smith
City Engineer
Licensed Surveyor R.P.A.